

**F(ab')<sub>2</sub> Anti-Dog IgG (H&L) (Texas Red™ Conjugated) Secondary Antibody**  
**Rabbit Polyclonal, Texas Red®**  
**Catalog # ASR2075****Specification****F(ab')<sub>2</sub> Anti-Dog IgG (H&L) (Texas Red™ Conjugated) Secondary Antibody - Product Information**

Description	<b>F(ab')<sub>2</sub> Anti-DOG IgG [H&amp;L] (RABBIT) Antibody Texas Red™ Conjugated</b>
Host	<b>Rabbit</b>
Conjugate	<b>Texas Red®</b>
FP Value	<b>5.6 moles Texas Red® per mole of IgG F(ab')<sub>2</sub></b>
Target Species	<b>Dog</b>
Clonality	<b>Polyclonal</b>
Application	<b>,3,4,</b>
Application Note	<b>FLISA 1:10,000-1:50,000;IF Microscopy 1:500-1:2,500;FlowCytometry 1:500-1:2,500</b>
Physical State	<b>Lyophilized</b>
Host Isotype	<b>IgG F(ab')<sub>2</sub></b>
Target Isotype	<b>IgG (H&amp;L)</b>
Buffer	<b>0.02 M Potassium Phosphate, 0.15 M Sodium Chloride, pH 7.2</b>
Immunogen	<b>Dog IgG whole molecule</b>
Reconstitution Volume	<b>500 µL</b>
Reconstitution Buffer	<b>Restore with deionized water (or equivalent)</b>
Stabilizer	<b>10 mg/mL Bovine Serum Albumin (BSA) - Immunoglobulin and Protease free</b>
Preservative	<b>0.01% (w/v) Sodium Azide</b>

**F(ab')<sub>2</sub> Anti-Dog IgG (H&L) (Texas Red™ Conjugated) Secondary Antibody - Additional Information****Shipping Condition**

Ambient

**Purity**

This product was prepared from monospecific antiserum by immunoaffinity chromatography using Dog IgG coupled to agarose beads followed by solid phase adsorption(s) to remove any unwanted reactivities, pepsin digestion and chromatographic separation. Assay by immunoelectrophoresis resulted in a single precipitin arc against anti-Rabbit Serum, Dog IgG and Dog Serum. No reaction was observed against anti-Pepsin or anti-Rabbit IgG F(c).

**Storage Condition**

Store vial at 4° C prior to restoration. For extended storage aliquot contents and freeze at -20° C or below. Avoid cycles of freezing and thawing. Centrifuge product if not completely clear after standing at room temperature. This product is stable for several weeks at 4° C as an undiluted liquid. Dilute only prior to immediate use.

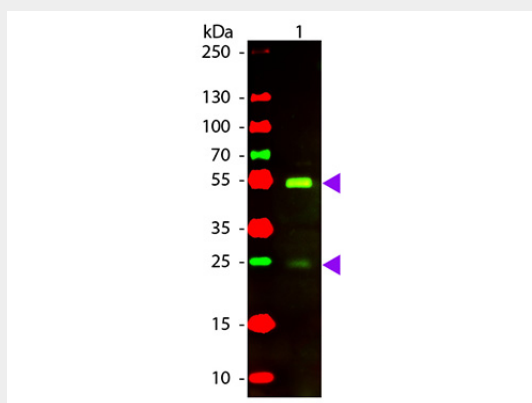
**Precautions Note**

This product is for research use only and is not intended for therapeutic or diagnostic applications.

**F(ab')<sub>2</sub> Anti-Dog IgG (H&L) (Texas Red™ Conjugated) Secondary Antibody - Protein Information****F(ab')<sub>2</sub> Anti-Dog IgG (H&L) (Texas Red™ Conjugated) Secondary Antibody - Protocols**

Provided below are standard protocols that you may find useful for product applications.

- [Western Blot](#)
- [Blocking Peptides](#)
- [Dot Blot](#)
- [Immunohistochemistry](#)
- [Immunofluorescence](#)
- [Immunoprecipitation](#)
- [Flow Cytometry](#)
- [Cell Culture](#)

**F(ab')<sub>2</sub> Anti-Dog IgG (H&L) (Texas Red™ Conjugated) Secondary Antibody - Images**

Western Blot of Rabbit anti-Dog IgG Texas Red Conjugated Antibody. Lane 1: Dog IgG. Lane 2: None. Load: 50 ng per lane. Primary antibody: None. Secondary antibody: Texas Red rabbit secondary antibody at 1:1,000 for 60 min at RT. Block: MB-070 for 30 min at RT. Predicted/Observed size: 28 & 55 kDa, 28 & 55 kDa for Dog IgG. Other band(s): None.

**F(ab')<sub>2</sub> Anti-Dog IgG (H&L) (Texas Red™ Conjugated) Secondary Antibody - Background**

This product is designed for immunofluorescence microscopy, fluorescence based plate assays (FLISA) and fluorescent western blotting. This product is also suitable for multiplex analysis, including multicolor imaging, utilizing various commercial platforms.