

**F(ab')<sub>2</sub> Anti-Rabbit IgG F(c) (Biotin Conjugated) Secondary Antibody**  
**Goat Polyclonal, Biotin**  
**Catalog # ASR2093****Specification****F(ab')<sub>2</sub> Anti-Rabbit IgG F(c) (Biotin Conjugated) Secondary Antibody - Product Information**

Description	<b>F(ab')<sub>2</sub> Anti-RABBIT IgG F(c) (GOAT) Antibody Biotin Conjugated</b>
Host	<b>Goat</b>
Conjugate	<b>Biotin</b>
Target Species	<b>Rabbit</b>
Clonality	<b>Polyclonal</b>
Application	<b>,1,10,15,</b>
Application Note	<b>ELISA 1:20,000-1:100,000;Western Blot 1:2,000-1:10,000;Immunochemistry 1:1,000-1:5,000</b>
Physical State	<b>Lyophilized</b>
Host Isotype	<b>IgG F(ab')<sub>2</sub></b>
Target Isotype	<b>IgG F(c)</b>
Buffer	<b>0.02 M Potassium Phosphate, 0.15 M Sodium Chloride, pH 7.2</b>
Immunogen	<b>Rabbit IgG F(c) fragment</b>
Reconstitution Volume	<b>500 µL</b>
Reconstitution Buffer	<b>Restore with deionized water (or equivalent)</b>
Stabilizer	<b>10 mg/mL Bovine Serum Albumin (BSA) - Immunoglobulin and Protease free</b>
Preservative	<b>0.01% (w/v) Sodium Azide</b>

**F(ab')<sub>2</sub> Anti-Rabbit IgG F(c) (Biotin Conjugated) Secondary Antibody - Additional Information****Shipping Condition**

Ambient

**Purity**

F(ab')<sub>2</sub> fragment biotin conjugated secondary antibody was prepared from monospecific antiserum by immunoaffinity chromatography using Rabbit IgG coupled to agarose beads followed by solid phase adsorption(s) to remove any unwanted reactivities, pepsin digestion and chromatographic separation. Assay by immunoelectrophoresis resulted in a single precipitin arc against anti-Biotin, anti-Goat Serum, Rabbit IgG, Rabbit IgG F(c) and Rabbit Serum. No reaction was observed against anti-Pepsin, anti-Goat IgG F(c) or Rabbit IgG F(ab')<sub>2</sub>.

**Storage Condition**

Store vial at 4° C prior to restoration. For extended storage aliquot contents and freeze at -20° C or below. Avoid cycles of freezing and thawing. Centrifuge product if not completely clear after standing at room temperature. This product is stable for several weeks at 4° C as an undiluted liquid. Dilute only prior to immediate use.

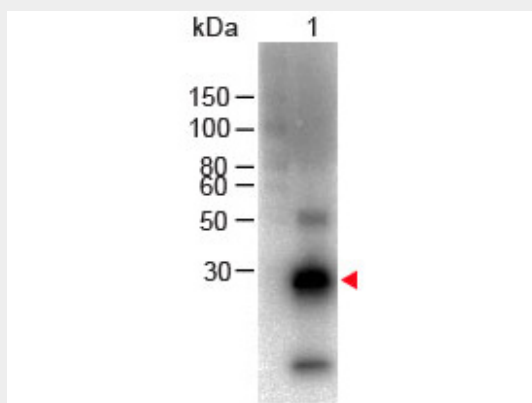
**Precautions Note**

This product is for research use only and is not intended for therapeutic or diagnostic applications.

**F(ab')<sub>2</sub> Anti-Rabbit IgG F(c) (Biotin Conjugated) Secondary Antibody - Protein Information****F(ab')<sub>2</sub> Anti-Rabbit IgG F(c) (Biotin Conjugated) Secondary Antibody - Protocols**

Provided below are standard protocols that you may find useful for product applications.

- [Western Blot](#)
- [Blocking Peptides](#)
- [Dot Blot](#)
- [Immunohistochemistry](#)
- [Immunofluorescence](#)
- [Immunoprecipitation](#)
- [Flow Cytometry](#)
- [Cell Culture](#)

**F(ab')<sub>2</sub> Anti-Rabbit IgG F(c) (Biotin Conjugated) Secondary Antibody - Images**

Western Blot of Goat anti-F(ab')<sub>2</sub> Rabbit IgG F(c) Antibody Biotin Conjugated Lane 1: Rabbit Fc Load: 100 ng per lane Primary antibody: F(ab')<sub>2</sub> Rabbit IgG F(c) Antibody Biotin Conjugated at 1:1000 for overnight at 4°C Secondary antibody: HRP Streptavidin at 1:40,000 for 30 min at RT Block: MB-070 for 30 min RT Predicted/Observed size: 28 kDa, 28 kDa

**F(ab')<sub>2</sub> Anti-Rabbit IgG F(c) (Biotin Conjugated) Secondary Antibody - Background**

Suitable for immunomicroscopy and flow cytometry or FACS analysis as well as other antibody based fluorescent assays requiring lot-to-lot consistency.