

Anti-Swine IgG (H&L) (Alkaline Phosphatase Conjugated) Secondary Antibody
Goat Polyclonal, Alkaline Phosphatase (Calf Intestine)
Catalog # ASR2234**Specification****Anti-Swine IgG (H&L) (Alkaline Phosphatase Conjugated) Secondary Antibody - Product Information**

Description	Anti-SWINE IgG (H&L) (GOAT) Antibody
Host	Alkaline Phosphatase Conjugated
Conjugate	Goat
Target Species	Alkaline Phosphatase (Calf Intestine)
Clonality	Swine
Application	Polyclonal
Application Note	,1,10,15, ELISA 1:2,000-1:10,000;Western Blot 1:500-1:2,500;Immunochemistry 1:200-1:1,000
Physical State	Liquid (sterile filtered)
Host Isotype	IgG
Target Isotype	IgG (H&L)
Buffer	0.05 M Tris Chloride, 0.15M Sodium Chloride, 0.001M Magnesium Chloride, 0.0001M Zinc Chloride, 50% (v/v) Glycerol; pH 8.0
Immunogen	Anti-Swine IgG whole molecule was produced by repeated immunization with Swine IgG whole molecule in goat.
Stabilizer	10 mg/mL Bovine Serum Albumin (BSA) - Immunoglobulin and Protease free
Preservative	0.01% (w/v) Sodium Azide

Anti-Swine IgG (H&L) (Alkaline Phosphatase Conjugated) Secondary Antibody - Additional Information**Shipping Condition**

Wet Ice

Purity

This product was prepared from monospecific antiserum by immunoaffinity chromatography using Swine IgG coupled to agarose beads followed by solid phase adsorption(s) to remove any unwanted reactivities. Assay by immunoelectrophoresis resulted in a single precipitin arc against anti-Alkaline Phosphatase (calf intestine), anti-Goat Serum, Swine IgG and Swine Serum.

Storage Condition

Store vial at 4° C before opening. DO NOT FREEZE. This product is stable at 4° C as an undiluted liquid. Dilute only prior to immediate use. Freezing alkaline phosphatase conjugates will result in a substantial loss of enzymatic activity.

Precautions Note

This product is for research use only and is not intended for therapeutic or diagnostic applications.

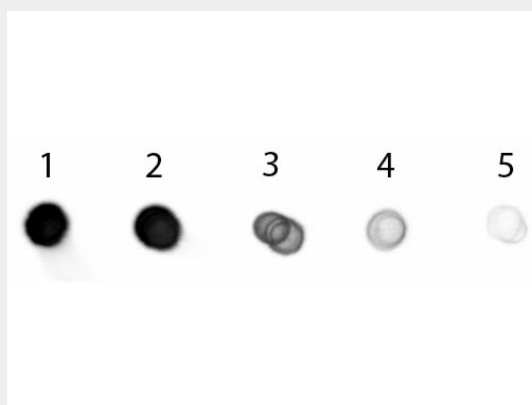
Anti-Swine IgG (H&L) (Alkaline Phosphatase Conjugated) Secondary Antibody - Protein Information

Anti-Swine IgG (H&L) (Alkaline Phosphatase Conjugated) Secondary Antibody - Protocols

Provided below are standard protocols that you may find useful for product applications.

- [Western Blot](#)
- [Blocking Peptides](#)
- [Dot Blot](#)
- [Immunohistochemistry](#)
- [Immunofluorescence](#)
- [Immunoprecipitation](#)
- [Flow Cytometry](#)
- [Cell Culture](#)

Anti-Swine IgG (H&L) (Alkaline Phosphatase Conjugated) Secondary Antibody - Images



Dot Blot of Goat anti-Swine IgG Antibody Alkaline Phosphatase Conjugated. Antigen: Swine IgG. Load: Lane 1 - 200 ng Lane 2 - 66.7 ng Lane 3 - 22.2 ng Lane 4 - 7.41 ng Lane 5 - 2.47 ng. Primary antibody: n/a. Secondary antibody: Goat anti-Swine IgG Antibody Alkaline Phosphatase Conjugated at 1:1,000 for 60 min at RT. Block: MB-070 for 1 HR at RT.

Anti-Swine IgG (H&L) (Alkaline Phosphatase Conjugated) Secondary Antibody - Background

Anti-Swine IgG whole molecule antibody generated in goat detects specifically Swine IgG whole molecule. This secondary antibody anti-Swine is ideal for investigators who routinely perform ELISA, Sandwich ELISA, titration assays, western-blot, immunoprecipitation and more generally immunoassays.