

Chicken IgG Fab Peroxidase
Catalog # ASR2299**Specification**

Chicken IgG Fab Peroxidase - Product Information

Description	CHICKEN IgG F(ab) fragment Peroxidase conjugated
Conjugate	Peroxidase (Horseradish)
Physical State	Lyophilized
Host Isotype	IgG F(ab)
Buffer	0.02 M Potassium Phosphate, 0.15 M Sodium Chloride, pH 7.2
Species of Origin	Chicken
Reconstitution Volume	1.0 mL
Reconstitution Buffer	Restore with deionized water (or equivalent)
Stabilizer	10 mg/mL Bovine Serum Albumin (BSA) - Immunoglobulin and Protease free
Preservative	0.01% (w/v) Gentamicin Sulfate. Do NOT add Sodium Azide!

Chicken IgG Fab Peroxidase - Additional Information**Shipping Condition**

Ambient

Purity

This product was prepared from normal serum by delipidation, salt fractionation, ion exchange chromatography followed by papain digestion and extensive dialysis against the buffer stated above. Assay by immunoelectrophoresis resulted in a single precipitin arc against anti-Peroxidase, anti- Chicken IgG, anti-Chicken IgG F(ab')₂ and anti-Chicken Serum. No reaction was observed against anti-Chicken IgG F(c) or anti- Papain.

Storage Condition

Store vial at 4° C prior to restoration. For extended storage aliquot contents and freeze at -20° C or below. Avoid cycles of freezing and thawing. Centrifuge product if not completely clear after standing at room temperature. This product is stable for several weeks at 4° C as an undiluted liquid. Dilute only prior to immediate use.

Precautions Note

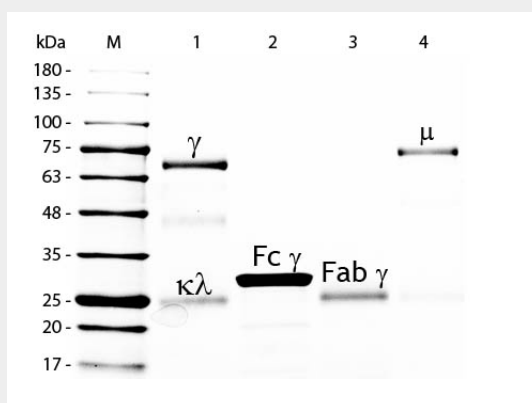
This product is for research use only and is not intended for therapeutic or diagnostic applications.

Chicken IgG Fab Peroxidase - Protein Information**Chicken IgG Fab Peroxidase - Protocols**

Provided below are standard protocols that you may find useful for product applications.

- [Western Blot](#)
- [Blocking Peptides](#)
- [Dot Blot](#)
- [Immunohistochemistry](#)
- [Immunofluorescence](#)
- [Immunoprecipitation](#)
- [Flow Cytometry](#)
- [Cell Culture](#)

Chicken IgG Fab Peroxidase - Images



SDS-PAGE of Chicken IgG F(ab) Fragment Peroxidase Conjugated . Lane M: 5 μ L Opal Prestained Marker . Lane 1: Reduced Chicken IgG Whole Molecule . Lane 2: Reduced Chicken IgG F(c) Fragment . Lane 3: Reduced Chicken IgG F(ab) Fragment Peroxidase Conjugated . Lane 4: Reduced Chicken IgM Whole Molecule . Load: 1 μ g per lane. Predicted/Observed size: IgG at 72 and 25 kDa; F(c) at 25 kDa; F(ab) at 25 kDa; IgM at 75 kDa. Observed F(c) Fragment migrates slightly higher. Other bands: Chicken IgG heavy chain alternative splicing variant at approximately 40 kDa in Lane 1.