

**Human IgG Fab**  
**Catalog # ASR2303****Specification**

---

**Human IgG Fab - Product Information**

Description	<b>HUMAN IgG F(ab) fragment</b>
Conjugate	<b>Unconjugated</b>
Physical State	<b>Lyophilized</b>
Host Isotype	<b>IgG F(ab)</b>
Buffer	<b>0.01 M Sodium Phosphate, 0.15 M Sodium Chloride, pH 7.2</b>
Species of Origin	<b>Human</b>
Reconstitution Volume	<b>1.0 mL</b>
Reconstitution Buffer	<b>Restore with deionized water (or equivalent)</b>
Preservative	<b>0.01% (w/v) Sodium Azide</b>

**Human IgG Fab - Additional Information****Shipping Condition**

Ambient

**Purity**

Human IgG F(ab) fragment was prepared from normal serum by a multi-step process which includes delipidation, salt fractionation and ion exchange chromatography followed by papain digestion and extensive dialysis against the buffer stated above. Human IgG F(ab) fragment assayed by immunoelectrophoresis resulted in a single precipitin arc against anti-Human Serum, anti- Human IgG and anti- Human IgG F(ab')<sub>2</sub>. No reaction was observed against anti- Human IgG F(c) or anti-Papain.

**Storage Condition**

Store vial at 4° C prior to restoration. For extended storage aliquot contents and freeze at -20° C or below. Avoid cycles of freezing and thawing. Centrifuge product if not completely clear after standing at room temperature. Human IgG F(ab) fragment is stable for several weeks at 4° C as an undiluted liquid. Dilute only prior to immediate use.

**Precautions Note**

This product is for research use only and is not intended for therapeutic or diagnostic applications.

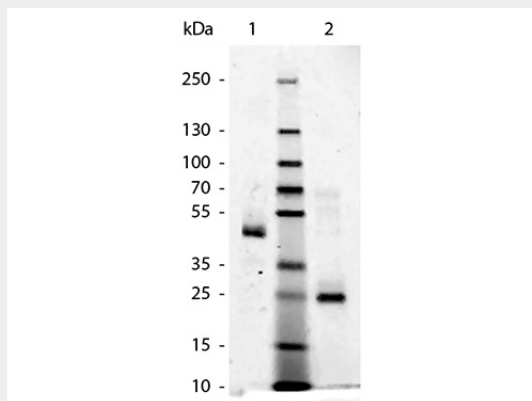
**Human IgG Fab - Protein Information****Human IgG Fab - Protocols**

Provided below are standard protocols that you may find useful for product applications.

- [Western Blot](#)

- [Blocking Peptides](#)
- [Dot Blot](#)
- [Immunohistochemistry](#)
- [Immunofluorescence](#)
- [Immunoprecipitation](#)
- [Flow Cytometry](#)
- [Cell Culture](#)

## Human IgG Fab - Images



SDS-Page of Human F(ab). Lane 1: Human F(ab) - Non-Reduced. Lane 2: Human F(ab) - Reduced. Load: 1.0 ug per lane. Predicted/Observed size - Non-Reduced: 50 kDa, 50 kDa for Human F(ab). Predicted/Observed size - Reduced: 25 kDa, 25 kDa for Human F(ab). Other band(s): None.

## Human IgG Fab - Background

Secreted as part of the adaptive immune response by plasma B cells, immunoglobulin G constitutes 75% of serum immunoglobulins. Immunoglobulin G binds to viruses, bacteria, as well as fungi and facilitates their destruction or neutralization via agglutination (and thereby immobilizing them), activation of the complement cascade, and opsonization for phagocytosis. The F(ab) fragment is the portion of the antibody that binds to the antigen target. The immunoglobulin F(ab) also possesses one constant and one variable region of both the heavy and light chain.