

F(ab')₂ Anti-HUMAN IgG F(c) (Fluorescein Conjugated) Pre-Adsorbed Secondary Antibody
Antibody
Goat Polyclonal, Fluorescein (FITC)
Catalog # ASR2386

Specification

F(ab')₂ Anti-HUMAN IgG F(c) (Fluorescein Conjugated) Pre-Adsorbed Secondary Antibody
- Product Information

Description	F(ab')₂ Anti-HUMAN IgG F(c) (GOAT) Antibody Fluorescein Conjugated Min X Bv Hs Ms & Rt Serum Proteins
Host	Goat
Conjugate	Fluorescein (FITC)
FP Value	5.6 moles Fluorescein (FITC) per mole of IgG F(ab')₂
Target Species	Human
Clonality	Polyclonal
Application	,3,4,
Application Note	FLISA 1:10,000-1:50,000;IF Microscopy 1:1,000-1:5,000;FlowCytometry 1:500-1:2,500
Physical State	Lyophilized
Host Isotype	IgG F(ab')₂
Target Isotype	IgG F(c)
Buffer	0.02 M Potassium Phosphate, 0.15 M Sodium Chloride, pH 7.2
Immunogen	Human IgG F(c) fragment
Reconstitution Volume	1.0 mL
Reconstitution Buffer	Restore with deionized water (or equivalent)
Stabilizer	10 mg/mL Bovine Serum Albumin (BSA) - Immunoglobulin and Protease free
Preservative	0.01% (w/v) Sodium Azide

F(ab')₂ Anti-HUMAN IgG F(c) (Fluorescein Conjugated) Pre-Adsorbed Secondary Antibody
- Additional Information

Shipping Condition

Ambient

Purity

This product was prepared from monospecific antiserum by immunoaffinity chromatography using Human IgG coupled to agarose beads followed by solid phase adsorption(s) to remove any unwanted reactivities, pepsin digestion and chromatographic separation. Assay by immunoelectrophoresis resulted in a single precipitin arc against anti-Fluorescein, anti-Goat Serum, Human IgG, Human IgG F(c) and Human Serum. No reaction was observed against anti-Pepsin, anti-Goat IgG F(c), Human IgG F(ab')₂ or Bovine, Horse, Mouse and Rat Serum Proteins.

Storage Condition

Store vial at 4° C prior to restoration. For extended storage aliquot contents and freeze at -20° C or below. Avoid cycles of freezing and thawing. Centrifuge product if not completely clear after standing at room temperature. This product is stable for several weeks at 4° C as an undiluted liquid. Dilute only prior to immediate use.

Precautions Note

This product is for research use only and is not intended for therapeutic or diagnostic applications.

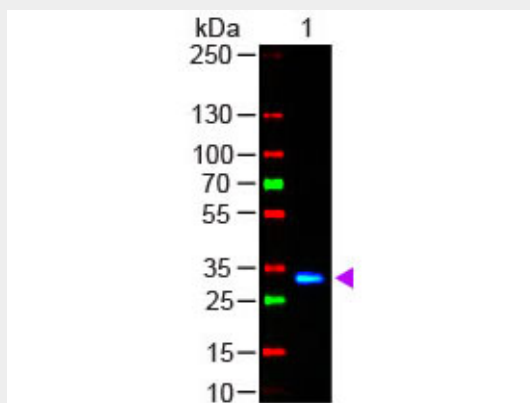
F(ab')₂ Anti-HUMAN IgG F(c) (Fluorescein Conjugated) Pre-Adsorbed Secondary Antibody - Protein Information

F(ab')₂ Anti-HUMAN IgG F(c) (Fluorescein Conjugated) Pre-Adsorbed Secondary Antibody - Protocols

Provided below are standard protocols that you may find useful for product applications.

- [Western Blot](#)
- [Blocking Peptides](#)
- [Dot Blot](#)
- [Immunohistochemistry](#)
- [Immunofluorescence](#)
- [Immunoprecipitation](#)
- [Flow Cytometry](#)
- [Cell Culture](#)

F(ab')₂ Anti-HUMAN IgG F(c) (Fluorescein Conjugated) Pre-Adsorbed Secondary Antibody - Images



Western Blot of Goat anti-F(ab')₂ HUMAN IgG F(c) Antibody Fluorescein Conjugated (Pre-Adsorbed) Lane 1: Human Fc Load: 50 ng per lane Secondary antibody: F(ab')₂ HUMAN IgG F(c) Antibody Fluorescein Conjugated (Pre-Adsorbed) at 1:1,000 for 60 min at RT Block: MB-070 for 30 min at RT

F(ab')₂ Anti-HUMAN IgG F(c) (Fluorescein Conjugated) Pre-Adsorbed Secondary Antibody - Background

This product is designed for immunofluorescence microscopy, fluorescence based plate assays (FLISA) and fluorescent western blotting. This product is also suitable for multiplex analysis, including multicolor imaging, utilizing various commercial platforms.