

Chicken IgG (Agarose Conjugated)
Catalog # ASR2411**Specification****Chicken IgG (Agarose Conjugated) - Product Information**

Description	CHICKEN IgG whole molecule Agarose Conjugated
Conjugate	Unconjugated
Physical State	Suspension of agarose beads
Buffer	0.01 M Sodium Phosphate, 0.15 M Sodium Chloride, pH 7.2
Species of Origin	Chicken
Stabilizer	None
Preservative	0.01% (w/v) Sodium Azide

Chicken IgG (Agarose Conjugated) - Additional Information**Shipping Condition**

Wet Ice

Purity

This product is an purified Chicken IgG isolated from normal Chicken Serum coupled to activated agarose. Sufficient antibody capacity is provided to bind a minimum of 5 mg of anti-Chicken IgG.

Storage Condition

Store vial at 4° C prior to opening. DO NOT FREEZE.

Precautions Note

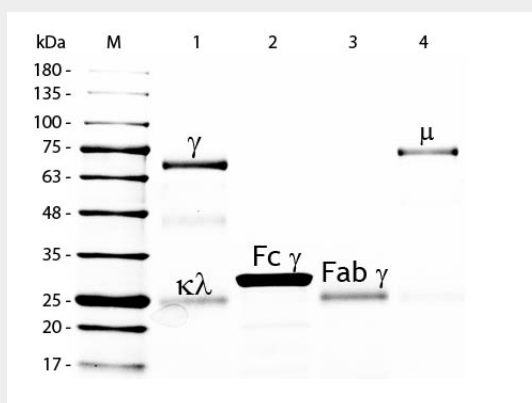
This product is for research use only and is not intended for therapeutic or diagnostic applications.

Chicken IgG (Agarose Conjugated) - Protein Information**Chicken IgG (Agarose Conjugated) - Protocols**

Provided below are standard protocols that you may find useful for product applications.

- [Western Blot](#)
- [Blocking Peptides](#)
- [Dot Blot](#)
- [Immunohistochemistry](#)
- [Immunofluorescence](#)
- [Immunoprecipitation](#)
- [Flow Cytometry](#)
- [Cell Culture](#)

Chicken IgG (Agarose Conjugated) - Images



SDS-PAGE of Chicken IgG Whole Molecule Agarose Conjugated. Lane M: 5 μ L Opal Prestained Marker . Lane 1: Reduced Chicken IgG Whole Molecule Agarose Conjugated . Lane 2: Reduced Chicken IgG F(c) Fragment . Lane 3: Reduced Chicken IgG F(ab) Fragment . Lane 4: Reduced Chicken IgM Whole Molecule . Load: 1 μ g per lane. Predicted/Observed size: IgG at 72 and 25 kDa; F(c) at 25 kDa; F(ab) at 25 kDa; IgM at 75 kDa. Observed F(c) Fragment migrates slightly higher. Other bands: Chicken IgG heavy chain alternative splicing variant at approximately 40 kDa in Lane 1.