

HUMAN IgG Fc
Catalog # ASR2419**Specification**

HUMAN IgG Fc - Product Information

Description	HUMAN IgG F(c) fragment
Conjugate	Unconjugated
Application	,1,10,
Application Note	ELISA 1:5000-1:50,000;Western Blot
	1:1000
Physical State	Liquid (sterile filtered)
Host Isotype	IgG F(c)
Buffer	0.02 M Potassium Phosphate, 0.15 M
	Sodium Chloride, pH 7.2
Species of Origin	Human
Stabilizer	None
Preservative	0.01% (w/v) Sodium Azide

HUMAN IgG Fc - Additional Information**Shipping Condition**

Wet Ice

Purity

HUMAN IgG F(c) was prepared from normal serum by a multi-step process which includes delipidation, salt fractionation, ion exchange chromatography and papain digestion followed by chromatographic separation and extensive dialysis against the buffer stated above. Assay by immunoelectrophoresis resulted in a single precipitin arc against anti-Human Serum, anti-Human IgG and anti-Human IgG F(c). No reaction was observed against anti-Human IgG F(ab')₂ or anti-Papain.

Storage Condition

Store vial at 4° C prior to opening. This product is stable 4° C as an undiluted liquid. Dilute only prior to immediate use. For extended storage mix with an equal volume of glycerol, aliquot contents and freeze at -20° C or below. Avoid cycles of freezing and thawing.

Precautions Note

This product is for research use only and is not intended for therapeutic or diagnostic applications.

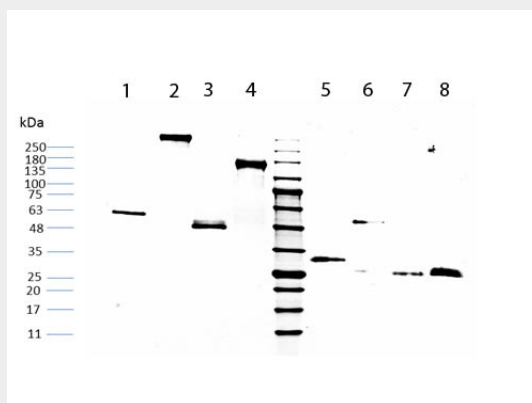
HUMAN IgG Fc - Protein Information**HUMAN IgG Fc - Protocols**

Provided below are standard protocols that you may find useful for product applications.

- [Western Blot](#)

- [Blocking Peptides](#)
- [Dot Blot](#)
- [Immunohistochemistry](#)
- [Immunofluorescence](#)
- [Immunoprecipitation](#)
- [Flow Cytometry](#)
- [Cell Culture](#)

HUMAN IgG Fc - Images



SDS-PAGE of Human IgG Fc. Lane 1: Non-reduced Human IgG Fc Lane 2: Non-reduced Human IgG Whole Molecule Lane 3: Non-reduced Human IgG F(ab) Fragment Lane 4: Non-reduced Human IgG F(ab')₂ Fragment. Middle Lane: 5 µL OPAL Pre-stained Marker MB-210-0500. Lane 5: Reduced Human IgG Fc Lane 6: Reduced Human IgG Whole Molecule Lane 7: Reduced Human IgG F(ab) Fragment Lane 8: Reduced Human IgG F(ab')₂ Fragment. Load: 1 µg per lane. Human IgG Whole Molecule, Human IgG F(ab) Fragment and Human IgG F(ab')₂ Fragment ran as controls. Predicted/Observed size: Non-reduced at 50 kDa, reduced at 25 kDa/Non-reduced at 55-60 kDa, reduced at 30-33 kDa.

HUMAN IgG Fc - Background

Human IgG Fc purified protein is a proteolytic fragment of immunoglobulin G (IgG) obtained by limited digestion with the enzyme papain under controlled conditions of temperature, time and pH. Receptors bind the Fc portion of Human IgG and often this fragment is removed from immunoglobulins to minimize receptor binding and lower background reactivity.