

**Anti-Human IgG (H&L) (Peroxidase Conjugated) Secondary Antibody**  
**Chicken Polyclonal, Peroxidase (Horseradish)**  
**Catalog # ASR2479****Specification****Anti-Human IgG (H&L) (Peroxidase Conjugated) Secondary Antibody - Product Information**

Description	<b>Anti-HUMAN IgG (H&amp;L) (CHICKEN) Antibody</b>
Host	<b>Peroxidase Conjugated</b>
Conjugate	<b>Chicken</b>
Target Species	<b>Peroxidase (Horseradish)</b>
Clonality	<b>Human</b>
Application	<b>Polyclonal</b>
Application Note	<b>,1,10,15, ELISA 1:30,000;Western Blot 1:1,000-1:5,000;Immunochemistry 1:500-1:2,500</b>
Physical State	<b>Lyophilized</b>
Host Isotype	<b>IgG</b>
Target Isotype	<b>IgG (H&amp;L)</b>
Buffer	<b>0.02 M Potassium Phosphate, 0.15 M Sodium Chloride, pH 7.2</b>
Immunogen	<b>Human IgG whole molecule</b>
Reconstitution Volume	<b>1.0 mL</b>
Reconstitution Buffer	<b>Restore with deionized water (or equivalent)</b>
Stabilizer	<b>10 mg/mL Bovine Serum Albumin (BSA) - Immunoglobulin and Protease free</b>
Preservative	<b>0.01% (w/v) Gentamicin Sulfate. Do NOT add Sodium Azide!</b>

**Anti-Human IgG (H&L) (Peroxidase Conjugated) Secondary Antibody - Additional Information****Shipping Condition**

Ambient

**Purity**

Human IgG (H&L) Antibody Peroxidase Conjugate was prepared from monospecific antiserum by immunoaffinity chromatography using Human IgG coupled to agarose. Assay by immunoelectrophoresis resulted in a single precipitin arc against anti-Peroxidase, anti-Chicken Serum, Human IgG and Human Serum.

**Storage Condition**

Store vial at 4° C prior to restoration. For extended storage aliquot contents and freeze at -20° C or below. Avoid cycles of freezing and thawing. Centrifuge product if not completely clear after standing at room temperature. This product is stable for several weeks at 4° C as an undiluted liquid. Dilute only prior to immediate use.

**Precautions Note**

This product is for research use only and is not intended for therapeutic or diagnostic applications.

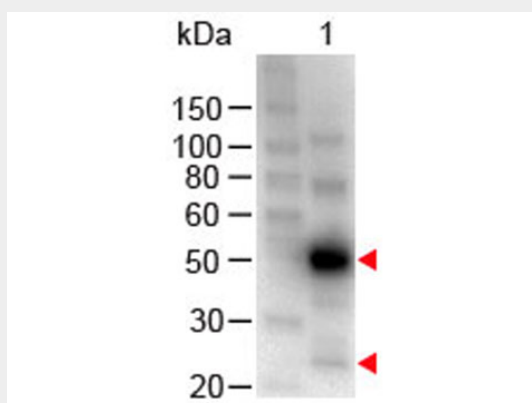
### **Anti-Human IgG (H&L) (Peroxidase Conjugated) Secondary Antibody - Protein Information**

### **Anti-Human IgG (H&L) (Peroxidase Conjugated) Secondary Antibody - Protocols**

Provided below are standard protocols that you may find useful for product applications.

- [Western Blot](#)
- [Blocking Peptides](#)
- [Dot Blot](#)
- [Immunohistochemistry](#)
- [Immunofluorescence](#)
- [Immunoprecipitation](#)
- [Flow Cytometry](#)
- [Cell Culture](#)

### **Anti-Human IgG (H&L) (Peroxidase Conjugated) Secondary Antibody - Images**



Western Blot of Chicken anti-Human IgG (H&L) Antibody Peroxidase Conjugated. Lane 1: Human IgG. Load: 100 ng per lane. Secondary antibody: Human IgG (H&L) Antibody Peroxidase Conjugated at 1:1,000 for 60 min at RT. Block: MB-070 for 30 min at RT. Predicted/Observed size: 55 and 28 kDa, 55 and 28 kDa.

### **Anti-Human IgG (H&L) (Peroxidase Conjugated) Secondary Antibody - Background**

Anti-Human IgG (H&L) Antibody Peroxidase Conjugated antibody detects human IgG. IgG antibodies are large molecules of about 150 kDa composed of four peptide chains. Each IgG contains two identical heavy chains of about 51 kDa and two identical light chains of about 26 kDa, thus a tetrameric quaternary structure. The two heavy chains are linked to each other and to a light chain each by disulfide bonds. The resulting tetramer has two identical halves, which together form the Y-like shape. Each end of the fork contains an identical antigen binding site. The Fc regions of IgGs bear a highly conserved N-glycosylation site.