

**Anti-Mouse IgG (H&L) (Alkaline Phosphatase Conjugated) Pre-Adsorbed Secondary Antibody**  
**Rabbit Polyclonal, Alkaline Phosphatase (Calf Intestine)**  
**Catalog # ASR2480**

**Specification**

---

**Anti-Mouse IgG (H&L) (Alkaline Phosphatase Conjugated) Pre-Adsorbed Secondary Antibody - Product Information**

Description	<b>Anti-MOUSE IgG (H&amp;L) (RABBIT) Antibody</b> <b>Alkaline Phosphatase Conjugated (Min X</b> <b>Human Serum Proteins)</b>
Host	<b>Rabbit</b>
Conjugate	<b>Alkaline Phosphatase (Calf Intestine)</b>
Target Species	<b>Mouse</b>
Clonality	<b>Polyclonal</b>
Application	<b>,1,10,15,</b>
Application Note	<b>ELISA 1:9,800;Western Blot</b> <b>1:500-1:2,000;Immunochemistry</b> <b>1:100-1:500</b>
Physical State	<b>Liquid (sterile filtered)</b>
Host Isotype	<b>IgG</b>
Target Isotype	<b>IgG (H&amp;L)</b>
Buffer	<b>0.05 M Tris Chloride, 0.15M Sodium</b> <b>Chloride, 0.001M Magnesium Chloride,</b> <b>0.0001M Zinc Chloride, 50% (v/v) Glycerol;</b> <b>pH 8.0</b>
Immunogen	<b>Mouse IgG whole molecule</b>
Stabilizer	<b>10 mg/mL Bovine Serum Albumin (BSA) -</b> <b>Immunoglobulin and Protease free</b>
Preservative	<b>0.01% (w/v) Sodium Azide</b>

**Anti-Mouse IgG (H&L) (Alkaline Phosphatase Conjugated) Pre-Adsorbed Secondary Antibody - Additional Information**

**Shipping Condition**

Wet Ice

**Purity**

This product was prepared from monospecific antiserum by immunoaffinity chromatography using Mouse IgG coupled to agarose followed by solid phase adsorption to remove unwanted reactivities and extensive dialysis against the buffer stated above. Assay by immunoelectrophoresis resulted in a single precipitin arc against anti-Alkaline Phosphatase (calf intestine), anti-Rabbit Serum, Mouse IgG and Mouse Serum. No reactivity was observed against Human serum proteins.

**Storage Condition**

Store vial at 4° C before opening. DO NOT FREEZE. This product is stable at 4° C as an undiluted liquid. Dilute only prior to immediate use. Freezing alkaline phosphatase conjugates will result in a substantial loss of enzymatic activity.

**Precautions Note**

This product is for research use only and is not intended for therapeutic or diagnostic applications.

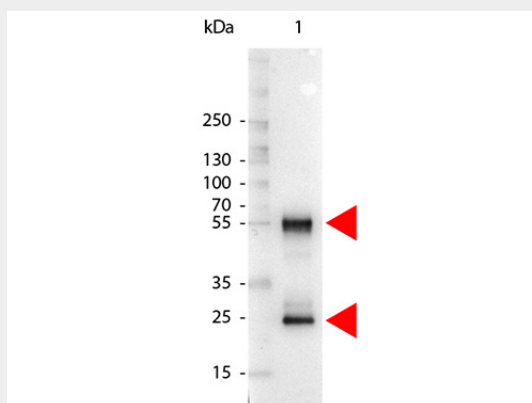
### **Anti-Mouse IgG (H&L) (Alkaline Phosphatase Conjugated) Pre-Adsorbed Secondary Antibody - Protein Information**

### **Anti-Mouse IgG (H&L) (Alkaline Phosphatase Conjugated) Pre-Adsorbed Secondary Antibody - Protocols**

Provided below are standard protocols that you may find useful for product applications.

- [Western Blot](#)
- [Blocking Peptides](#)
- [Dot Blot](#)
- [Immunohistochemistry](#)
- [Immunofluorescence](#)
- [Immunoprecipitation](#)
- [Flow Cytometry](#)
- [Cell Culture](#)

### **Anti-Mouse IgG (H&L) (Alkaline Phosphatase Conjugated) Pre-Adsorbed Secondary Antibody - Images**



Western Blot of Alkaline Phosphatase Conjugated Rabbit anti-Mouse IgG antibody. Lane 1: Mouse IgG. Lane 2: none. Load: 100 ng per lane. Primary antibody: none. Secondary antibody: Alkaline Phosphatase mouse secondary antibody at 1:1,000 for 60 min at RT. Block: MB-070 for 30 min RT. Predicted/Observed size: 55 kDa, 28 kDa for Mouse IgG. Other band(s): none.