

Anti-Rabbit IgG (H&L) (Peroxidase Conjugated) Secondary Antibody
Chicken Polyclonal, Peroxidase (Horseradish)
Catalog # ASR2490**Specification****Anti-Rabbit IgG (H&L) (Peroxidase Conjugated) Secondary Antibody - Product Information**

Description	Anti-RABBIT IgG (H&L) (CHICKEN) Antibody
Host	Peroxidase Conjugated
Conjugate	Chicken
Target Species	Peroxidase (Horseradish)
Reactivity	Rabbit
Clonality	Rabbit
Application	Polyclonal
Application Note	,1,10,15, ELISA 1:140,000;Western Blot 1:2,000-1:10,000;Immunochemistry 1:1,000-1:5,000
Physical State	Lyophilized
Host Isotype	IgG
Target Isotype	IgG (H&L)
Buffer	0.02 M Potassium Phosphate, 0.15 M Sodium Chloride, pH 7.2
Immunogen	Anti-Rabbit IgG whole molecule was produced by repeated immunization with Rabbit IgG whole molecule in chicken.
Reconstitution Volume	1.0 mL
Reconstitution Buffer	Restore with deionized water (or equivalent)
Stabilizer	10 mg/mL Bovine Serum Albumin (BSA) - Immunoglobulin and Protease free
Preservative	0.01% (w/v) Gentamicin Sulfate. Do NOT add Sodium Azide!

Anti-Rabbit IgG (H&L) (Peroxidase Conjugated) Secondary Antibody - Additional Information**Shipping Condition**

Ambient

Purity

This product was prepared from monospecific antiserum by immunoaffinity chromatography using Rabbit IgG coupled to agarose. Assay by immunoelectrophoresis resulted in a single precipitin arc against anti-Peroxidase, anti-Chicken Serum, Rabbit IgG and Rabbit Serum.

Storage Condition

Store vial at 4° C prior to restoration. For extended storage aliquot contents and freeze at -20° C or below. Avoid cycles of freezing and thawing. Centrifuge product if not completely clear after standing at room temperature. This product is stable for several weeks at 4° C as an undiluted liquid. Dilute only prior to immediate use.

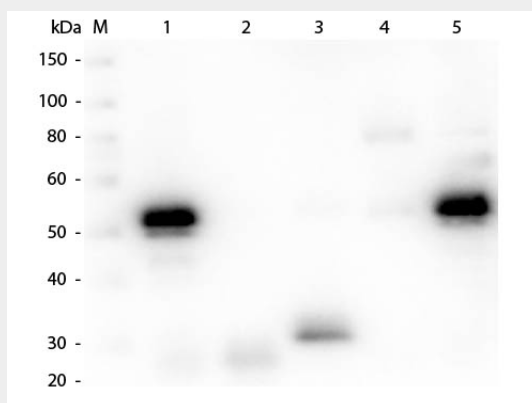
Precautions Note

This product is for research use only and is not intended for therapeutic or diagnostic applications.

Anti-Rabbit IgG (H&L) (Peroxidase Conjugated) Secondary Antibody - Protein Information**Anti-Rabbit IgG (H&L) (Peroxidase Conjugated) Secondary Antibody - Protocols**

Provided below are standard protocols that you may find useful for product applications.

- [Western Blot](#)
- [Blocking Peptides](#)
- [Dot Blot](#)
- [Immunohistochemistry](#)
- [Immunofluorescence](#)
- [Immunoprecipitation](#)
- [Flow Cytometry](#)
- [Cell Culture](#)

Anti-Rabbit IgG (H&L) (Peroxidase Conjugated) Secondary Antibody - Images

Western Blot of Anti-Rabbit IgG (H&L) (CHICKEN) Antibody . Lane M: 3 μ l Molecular Ladder. Lane 1: Rabbit IgG whole molecule . Lane 2: Rabbit IgG F(ab) Fragment . Lane 3: Rabbit IgG F(c) Fragment . Lane 4: Rabbit IgM Whole Molecule . Lane 5: Normal Rabbit Serum . All samples were reduced. Load: 50 ng per lane. Block: MB-070 for 30 min at RT. Primary Antibody: Anti-Rabbit IgG (H&L) (CHICKEN) Antibody 1:1,000 for 60 min at RT. Secondary antibody: Anti-Chicken IgG (GOAT) Peroxidase Conjugated Antibody 1:40,000 in MB-070 for 30 min at RT. Predicted/Observed Size: 25 and 50 kDa for Rabbit IgG and Serum, 25 kDa for F(c) and F(ab), 70 and 23 kDa for IgM. Rabbit F(c) migrates slightly higher.

Anti-Rabbit IgG (H&L) (Peroxidase Conjugated) Secondary Antibody - Background

Anti-Rabbit IgG whole molecule antibody generated in chicken detects specifically Rabbit IgG whole molecule. This secondary antibody anti-Rabbit is ideal for investigators who routinely perform ELISA, Sandwich ELISA, titration assays, western-blot, immunoprecipitation and more generally immunoassays.