

**Anti-Mouse IgG1 (Fluorescein Conjugated) Pre-adsorbed Secondary Antibody**  
**Goat Polyclonal, Fluorescein (FITC)**  
**Catalog # ASR2712****Specification****Anti-Mouse IgG1 (Fluorescein Conjugated) Pre-adsorbed Secondary Antibody - Product Information**

Description	<b>Anti-MOUSE IgG1 (Gamma 1 chain) (GOAT) Antibody Fluorescein Conjugated (Min Cross Bv, Hu, and Rb Serum Proteins)</b>
Host	<b>Goat</b>
Conjugate	<b>Fluorescein (FITC)</b>
FP Value	<b>2.8 moles Fluorescein (FITC) per mole of IgG</b>
Target Species	<b>Mouse</b>
Reactivity	<b>Mouse</b>
Clonality	<b>Polyclonal</b>
Application	<b>,1,3,4,15,</b>
Application Note	<b>FLISA 1:10,000-1:50,000;IF Microscopy 1:1,000-1:5,000;FlowCytometry 1:200-1:500;Western Blot 1:2,000-1:10,000;Immunochemistry 1:1,000-1:5,000</b>
Physical State	<b>Lyophilized</b>
Host Isotype	<b>IgG</b>
Target Isotype	<b>IgG1</b>
Buffer	<b>0.02 M Potassium Phosphate, 0.15 M Sodium Chloride, pH 7.2</b>
Immunogen	<b>Mouse IgG heavy chain</b>
Reconstitution Volume	<b>1.0 mL</b>
Reconstitution Buffer	<b>Restore with deionized water (or equivalent)</b>
Stabilizer	<b>10 mg/mL Bovine Serum Albumin (BSA) - Immunoglobulin and Protease free</b>
Preservative	<b>0.01% (w/v) Sodium Azide</b>

**Anti-Mouse IgG1 (Fluorescein Conjugated) Pre-adsorbed Secondary Antibody - Additional Information****Shipping Condition**

Ambient

**Purity**

Anti-Mouse IgG1 FITC conjugated secondary antibody prepared from monospecific antiserum by immunoaffinity chromatography using Mouse IgG1 coupled to agarose beads followed by solid phase adsorption(s) to remove any unwanted reactivities. Assay by immunoelectrophoresis resulted in a single precipitin arc against anti-Fluorescein, anti-Goat Serum, Mouse IgG and Mouse Serum. No reaction was observed against Bovine, Human, and Rabbit Serum Proteins. Specificity was confirmed by ELISA at less than 1% of target signal.

**Storage Condition**

Store vial at 4° C prior to restoration. For extended storage aliquot antibody and freeze at -20° C or below. Avoid cycles of freezing and thawing. Centrifuge product if not completely clear after standing at room temperature. This product is stable for several weeks at 4° C as an undiluted liquid. Dilute only prior to immediate use.

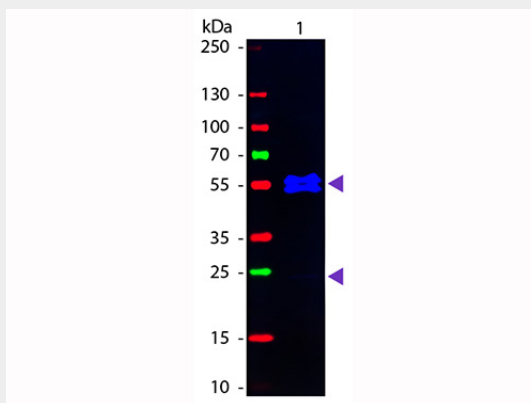
**Precautions Note**

This product is for research use only and is not intended for therapeutic or diagnostic applications.

**Anti-Mouse IgG1 (Fluorescein Conjugated) Pre-adsorbed Secondary Antibody - Protein Information****Anti-Mouse IgG1 (Fluorescein Conjugated) Pre-adsorbed Secondary Antibody - Protocols**

Provided below are standard protocols that you may find useful for product applications.

- [Western Blot](#)
- [Blocking Peptides](#)
- [Dot Blot](#)
- [Immunohistochemistry](#)
- [Immunofluorescence](#)
- [Immunoprecipitation](#)
- [Flow Cytometry](#)
- [Cell Culture](#)

**Anti-Mouse IgG1 (Fluorescein Conjugated) Pre-adsorbed Secondary Antibody - Images**

Western Blot of Fluorescein conjugated Goat anti-Mouse IgG1 (Gamma 1 chain) (Pre-Adsorbed) secondary antibody. Lane 1: Mouse IgG1. Lane 2: none. Load: 50 ng per lane. Primary antibody: none. Secondary antibody: Fluorescein goat secondary antibody at 1:1,000 for 60 min at RT. Block: MB-070 for 30 min at RT. Predicted/Observed size: 55 kDa, 55 kDa for Mouse IgG1 (Gamma 1 chain). Other band(s): none.

**Anti-Mouse IgG1 (Fluorescein Conjugated) Pre-adsorbed Secondary Antibody - Background**

FITC Conjugated Secondary Antibodies are designed for immunofluorescence microscopy, fluorescence based plate assays (FLISA) and fluorescent western blotting. This product is also suitable for multiplex analysis, including multicolor imaging, utilizing various commercial platforms.