

Anti-Rabbit IgG (H&L) (Biotin Conjugated) Pre-Adsorbed Secondary Antibody
Donkey Polyclonal, Biotin
Catalog # ASR2787**Specification****Anti-Rabbit IgG (H&L) (Biotin Conjugated) Pre-Adsorbed Secondary Antibody - Product Information**

Description	Anti-RABBIT IgG (H&L) (DONKEY) Antibody Biotin Conjugated (Min X Bv Ch Gt GP Ham Hs Hu Ms Rt & Sh Serum Proteins)
Host	Donkey
Conjugate	Biotin
FP Value	10-20 moles Biotin per mole of IgG
Target Species	Rabbit
Clonality	Polyclonal
Application	,1,10,15,
Application Note	ELISA 1:20,000-1:100,000;Western Blot 1:2,000-1:10,000;Immunochemistry 1:1,000-1:5,000
Physical State	Lyophilized
Host Isotype	IgG
Target Isotype	IgG (H&L)
Buffer	0.02 M Potassium Phosphate, 0.15 M Sodium Chloride, pH 7.2
Immunogen	Rabbit IgG whole molecule
Reconstitution Volume	1.0 mL
Reconstitution Buffer	Restore with deionized water (or equivalent)
Stabilizer	10 mg/mL Bovine Serum Albumin (BSA) - Immunoglobulin and Protease free
Preservative	0.01% (w/v) Sodium Azide

Anti-Rabbit IgG (H&L) (Biotin Conjugated) Pre-Adsorbed Secondary Antibody - Additional Information**Shipping Condition**

Ambient

Purity

This product was prepared from monospecific antiserum by immunoaffinity chromatography using Rabbit IgG coupled to agarose beads followed by solid phase adsorption(s) to remove any unwanted reactivities. Assay by immunoelectrophoresis resulted in a single precipitin arc against anti-biotin, anti-Donkey Serum, Rabbit IgG and Rabbit Serum. No reaction was observed against Bovine, Chicken, Goat, Guinea Pig, Horse, Human, Mouse, Rat and Sheep Serum Proteins.

Storage Condition

Store vial at 4° C prior to restoration. For extended storage aliquot contents and freeze at -20° C or below. Avoid cycles of freezing and thawing. Centrifuge product if not completely clear after standing at room temperature. This product is stable for several weeks at 4° C as an undiluted liquid. Dilute only prior to immediate use.

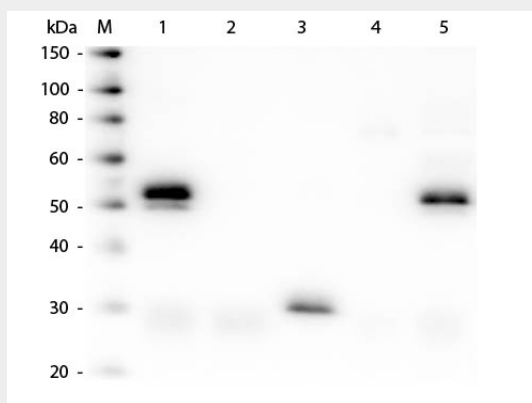
Precautions Note

This product is for research use only and is not intended for therapeutic or diagnostic applications.

Anti-Rabbit IgG (H&L) (Biotin Conjugated) Pre-Adsorbed Secondary Antibody - Protein Information**Anti-Rabbit IgG (H&L) (Biotin Conjugated) Pre-Adsorbed Secondary Antibody - Protocols**

Provided below are standard protocols that you may find useful for product applications.

- [Western Blot](#)
- [Blocking Peptides](#)
- [Dot Blot](#)
- [Immunohistochemistry](#)
- [Immunofluorescence](#)
- [Immunoprecipitation](#)
- [Flow Cytometry](#)
- [Cell Culture](#)

Anti-Rabbit IgG (H&L) (Biotin Conjugated) Pre-Adsorbed Secondary Antibody - Images

Western Blot of Anti-Rabbit IgG (H&L) (DONKEY) Antibody (Min X Bv Ch Gt GP Ham Hs Hu Ms Rt & Sh Serum Proteins) . Lane M: 3 μ l Molecular Ladder. Lane 1: Rabbit IgG whole molecule . Lane 2: Rabbit IgG F(ab) Fragment . Lane 3: Rabbit IgG F(c) Fragment . Lane 4: Rabbit IgM Whole Molecule . Lane 5: Normal Rabbit Serum . All samples were reduced. Load: 50 ng of IgG, F(ab), F(c) and Serum, 25 ng of IgM. Block: MB-070 for 30 min at RT. Primary Antibody: Anti-Rabbit IgG (H&L) (DONKEY) Antibody (Min X Bv Ch Gt GP Ham Hs Hu Ms Rt & Sh Serum Proteins) 1:7,500 for 60 min at RT. Secondary antibody: Anti-Donkey IgG (GOAT) Peroxidase Conjugated Antibody 1:40,000 in MB-070 for 30 min at RT. Predicted/Observed Size: 25 and 50 kDa for Rabbit IgG and Serum, 25 kDa for F(c) and F(ab), 70 and 23 kDa for IgM. Rabbit F(c) migrates slightly higher.