

Anti-Rat IgG F(ab')₂ (Alkaline Phosphatase Conjugated) Secondary Antibody
Rabbit Polyclonal, Alkaline Phosphatase (Calf Intestine)
Catalog # ASR2965**Specification****Anti-Rat IgG F(ab')₂ (Alkaline Phosphatase Conjugated) Secondary Antibody - Product Information**

Description	Anti-RAT IgG F(ab')₂ (RABBIT) Antibody Alkaline Phosphatase Conjugated
Host	Rabbit
Conjugate	Alkaline Phosphatase (Calf Intestine)
Target Species	Rat
Clonality	Polyclonal
Application	,1,2,10,
Application Note	ELISA 1:2,000-1:10,000;Western Blot 1:500-1:2,500;Immunohistochemistry 1:200-1:1,000
Physical State	Liquid (sterile filtered)
Host Isotype	IgG
Target Isotype	IgG F(ab')₂
Buffer	0.05 M Tris Chloride, 0.15M Sodium Chloride, 0.001M Magnesium Chloride, 0.0001M Zinc Chloride, 50% (v/v) Glycerol; pH 8.0
Immunogen	Rat IgG F(ab')₂ fragment
Stabilizer	10 mg/mL Bovine Serum Albumin (BSA) - Immunoglobulin and Protease free
Preservative	0.01% (w/v) Sodium Azide

Anti-Rat IgG F(ab')₂ (Alkaline Phosphatase Conjugated) Secondary Antibody - Additional Information**Shipping Condition**

Wet Ice

Purity

This product was prepared from monospecific antiserum by immunoaffinity chromatography using Rat IgG coupled to agarose beads followed by solid phase adsorption(s) to remove any unwanted reactivities. Assay by immunoelectrophoresis resulted in a single precipitin arc against anti-Alkaline Phosphatase (calf intestine), anti-Rabbit Serum, Rat IgG, Rat IgG F(ab')₂ and Rat Serum. No reaction was observed against Rat IgG F(c).

Storage Condition

Store vial at 4° C before opening. DO NOT FREEZE. This product is stable at 4° C as an undiluted liquid. Dilute only prior to immediate use. Freezing alkaline phosphatase conjugates will result in a substantial loss of enzymatic activity.

Precautions Note

This product is for research use only and is not intended for therapeutic or diagnostic applications.

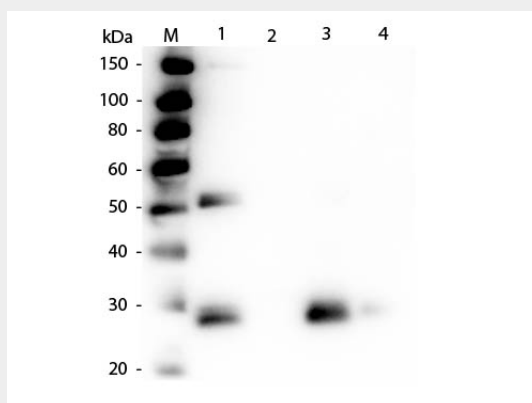
Anti-Rat IgG F(ab')₂ (Alkaline Phosphatase Conjugated) Secondary Antibody - Protein Information

Anti-Rat IgG F(ab')₂ (Alkaline Phosphatase Conjugated) Secondary Antibody - Protocols

Provided below are standard protocols that you may find useful for product applications.

- [Western Blot](#)
- [Blocking Peptides](#)
- [Dot Blot](#)
- [Immunohistochemistry](#)
- [Immunofluorescence](#)
- [Immunoprecipitation](#)
- [Flow Cytometry](#)
- [Cell Culture](#)

Anti-Rat IgG F(ab')₂ (Alkaline Phosphatase Conjugated) Secondary Antibody - Images



Western Blot of Anti-Rat IgG F(ab')₂ (RABBIT) Antibody . Lane M: 3 µl Molecular Ladder. Lane 1: Rat IgG whole molecule . Lane 2: Rat IgG F(c) Fragment . Lane 3: Rat IgG F(ab) Fragment . Lane 4: Rat IgM Whole Molecule . All samples were reduced. Load: 50 ng per lane. Block: MB-070 for 30 min at RT. Primary Antibody: Anti-Rat IgG F(ab')₂ (RABBIT) Antibody 1:1,000 for 60 min at RT. Secondary Antibody: Anti-Rabbit IgG (GOAT) Peroxidase Conjugated Antibody 1:40,000 in MB-070 for 30 min at RT. Predicted/Observed Size: 25 and 55 kDa for Rat IgG, 25 kDa for F(c) and F(ab), 78 and 25 kDa for IgM. Rat F(c) migrates slightly higher.