

**Monkey IgM**  
**Catalog # ASR3030****Specification**

---

**Monkey IgM - Product Information**

Description	<b>MONKEY IgM whole molecule</b>
Conjugate	<b>Unconjugated</b>
Physical State	<b>Liquid (sterile filtered)</b>
Host Isotype	<b>IgM</b>
Buffer	<b>0.1 M Tris Chloride, 0.5 M Sodium Chloride, pH 8.0</b>
Species of Origin	<b>Monkey</b>
Stabilizer	<b>None</b>
Preservative	<b>0.1% (w/v) Sodium Azide</b>

**Monkey IgM - Additional Information****Shipping Condition**

Wet Ice

**Purity**

Monkey IgM whole molecule was prepared from normal serum by a multi-step process which includes delipidation, selective precipitation and tandem molecular sieve chromatography followed by extensive dialysis against the buffer stated above. Monkey IgM whole molecule was assayed by immunoelectrophoresis resulted in a single precipitin arc against anti-Monkey Serum and anti-Monkey IgM (  $\mu$  chain specific). No reaction was observed against anti-Monkey IgG F(c). Some light chain cross reactivity will occur with anti-Monkey IgG.

**Storage Condition**

Store vial at 4° C prior to opening. This product is stable 4° C as an undiluted liquid. Dilute only prior to immediate use. For extended storage mix with an equal volume of glycerol, aliquot contents and freeze at -20° C or below. Avoid cycles of freezing and thawing.

**Precautions Note**

This product is for research use only and is not intended for therapeutic or diagnostic applications.

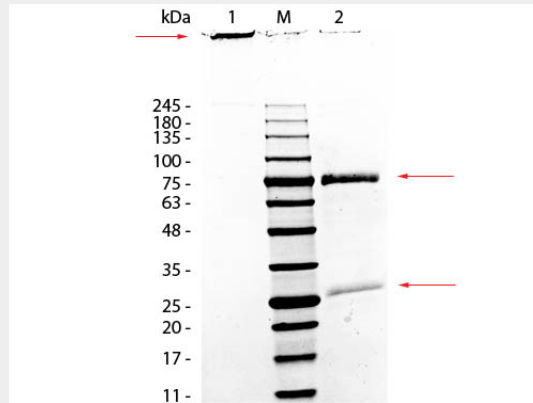
**Monkey IgM - Protein Information****Monkey IgM - Protocols**

Provided below are standard protocols that you may find useful for product applications.

- [Western Blot](#)
- [Blocking Peptides](#)
- [Dot Blot](#)
- [Immunohistochemistry](#)

- [Immunofluorescence](#)
- [Immunoprecipitation](#)
- [Flow Cytometry](#)
- [Cell Culture](#)

### Monkey IgM - Images



SDS-PAGE of Monkey IgM Whole Molecule. Lane 1: Monkey IgM, Non-Reduced. Lane 2: Monkey IgM, Reduced. Load: 1.0  $\mu$ g per lane. Predicted/Observed size - Non-Reduced: 900 kDa (Pentamer), 900 kDa (Molecule larger than can pass through gel), Reduced: 78 and 25 kDa, 75 and 25 kDa.

### Monkey IgM - Background

Immunoglobulin M is the largest antibody isotype and the first to be secreted against an initial exposure to antigen. IgM is predominantly produced in the spleen. Formed from covalently linking 5 immunoglobulins together, the approximate molecular weight of IgM is 900kDa and possesses 10 binding sites (though due to the size of most antigens, not all sites are capable of binding at once). Due to this large size, IgM is typically isolated to the serum.