

**Anti-Mouse IgG (gamma 1, 2a, 2b and 3 chain) (Phycoerythrin Conjugated) Secondary Antibody****Rabbit Polyclonal, R-Phycoerythrin (RPE)****Catalog # ASR3095****Specification****Anti-Mouse IgG (gamma 1, 2a, 2b and 3 chain) (Phycoerythrin Conjugated) Secondary Antibody - Product Information**

Description	<b>Anti-MOUSE IgG (gamma 1, 2a, 2b and 3 chain) (RABBIT) Antibody Phycoerythrin Conjugated</b>
Host	<b>Rabbit</b>
Conjugate	<b>R-Phycoerythrin (RPE)</b>
Target Species	<b>Mouse</b>
Reactivity	<b>Mouse</b>
Clonality	<b>Polyclonal</b>
Application	<b>,3,4,</b>
Application Note	<b>IF Microscopy 1:100-1:250;FlowCytometry 1:100-1:250</b>
Physical State	<b>Lyophilized</b>
Host Isotype	<b>IgG</b>
Target Isotype	<b>IgG (gamma 1, 2a, 2b and 3 chain)</b>
Buffer	<b>0.02 M Potassium Phosphate, 0.15 M Sodium Chloride, pH 7.2</b>
Immunogen	<b>Anti-Mouse IgG subclass pan reactive Secondary Antibody was produced by repeated immunization with highly purified mouse IgG gamma 1, gamma 2a, gamma 2b and gamma 3 proteins</b>
Reconstitution Volume	<b>1.0 mL</b>
Reconstitution Buffer	<b>Restore with deionized water (or equivalent)</b>
Stabilizer	<b>10 mg/mL Bovine Serum Albumin (BSA) - Immunoglobulin and Protease free</b>
Preservative	<b>0.01% (w/v) Sodium Azide</b>

**Anti-Mouse IgG (gamma 1, 2a, 2b and 3 chain) (Phycoerythrin Conjugated) Secondary Antibody - Additional Information****Shipping Condition****Ambient****Purity**

Anti-Mouse IgG subclass pan reactive Secondary Antibody was prepared from monospecific antiserum by immunoaffinity chromatography using antigens coupled to agarose beads followed by solid phase adsorption(s) to remove any unwanted reactivities. This product shows balanced reactivity to Mouse IgG1, IgG2a, IgG2b and IgG3 proteins and is suitable to screen IgG class hybridoma clones. Minimal cross reactivity is observed against other Mouse immunoglobulin classes or light chain proteins. Coupling to R-PE was followed by size exclusion chromatography to purify conjugate from unreacted R-PE and antibody. Assay by immunoelectrophoresis resulted in a

single precipitin arc against anti-Phycoerythrin, anti-Rabbit Serum, Mouse IgG and Mouse Serum.

#### Storage Condition

Store vial at 4° C prior to opening. Dilute only prior to immediate use. Do not freeze after reconstitution. Store reagent in the dark. This product is stable at 4° C as an undiluted liquid. Use subdued lighting during handling and incubation of cells prior to analysis.

#### Precautions Note

This product is for research use only and is not intended for therapeutic or diagnostic applications.

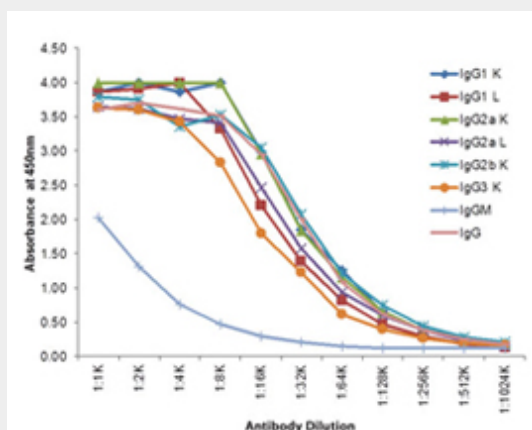
### Anti-Mouse IgG (gamma 1, 2a, 2b and 3 chain) (Phycoerythrin Conjugated) Secondary Antibody - Protein Information

### Anti-Mouse IgG (gamma 1, 2a, 2b and 3 chain) (Phycoerythrin Conjugated) Secondary Antibody - Protocols

Provided below are standard protocols that you may find useful for product applications.

- [Western Blot](#)
- [Blocking Peptides](#)
- [Dot Blot](#)
- [Immunohistochemistry](#)
- [Immunofluorescence](#)
- [Immunoprecipitation](#)
- [Flow Cytometry](#)
- [Cell Culture](#)

### Anti-Mouse IgG (gamma 1, 2a, 2b and 3 chain) (Phycoerythrin Conjugated) Secondary Antibody - Images



Indirect ELISA of Rabbit Anti-Mouse IgG (gamma 1, 2a, 2b, and 3) antibody. Antigen: purified mouse IgG heavy and light chains. Coating amount: 0.1 µg per well. Primary antibody: Rabbit Anti-Mouse IgG (Gamma 1, 2a, 2b, and 3) HRP conjugated Antibody. Dilution series: 2-fold. Substrate: TMB .

### Anti-Mouse IgG (gamma 1, 2a, 2b and 3 chain) (Phycoerythrin Conjugated) Secondary Antibody - Background

Anti-Mouse IgG subclass pan reactive Secondary Antibody Phycoerythrin Conjugated is ideal for investigators who routinely perform flow cytometry, immunohistochemistry or IHC and other immunoassays like western blotting.