

**Rat IgG F(c) Rhodamine**  
**Catalog # ASR3129****Specification**

---

**Rat IgG F(c) Rhodamine - Product Information**

Description	<b>RAT IgG F(c) fragment Rhodamine conjugated</b>
Conjugate	<b>Rhodamine (TRITC)</b>
Physical State	<b>Lyophilized</b>
Host Isotype	<b>IgG F(c)</b>
Buffer	<b>0.02 M Potassium Phosphate, 0.15 M Sodium Chloride, pH 7.2</b>
Species of Origin	<b>Rat</b>
Reconstitution Volume	<b>1.0 mL</b>
Reconstitution Buffer	<b>Restore with deionized water (or equivalent)</b>
Stabilizer	<b>10 mg/mL Bovine Serum Albumin (BSA) - Immunoglobulin and Protease free</b>
Preservative	<b>0.01% (w/v) Sodium Azide</b>

**Rat IgG F(c) Rhodamine - Additional Information****Shipping Condition**

Ambient

**Purity**

This product was prepared from normal serum by delipidation, salt fractionation, ion exchange chromatography followed by papain digestion and extensive dialysis against the buffer stated above. Assay by immunoelectrophoresis resulted in a single precipitin arc against anti-Rat IgG, anti-Rat IgG F(c) and anti-Rat Serum. No reaction was observed against anti-Rat IgG F(ab')<sub>2</sub> or anti-Papain.

**Storage Condition**

Store vial at 4° C prior to restoration. For extended storage aliquot contents and freeze at -20° C or below. Avoid cycles of freezing and thawing. Centrifuge product if not completely clear after standing at room temperature. This product is stable for several weeks at 4° C as an undiluted liquid. Dilute only prior to immediate use.

**Precautions Note**

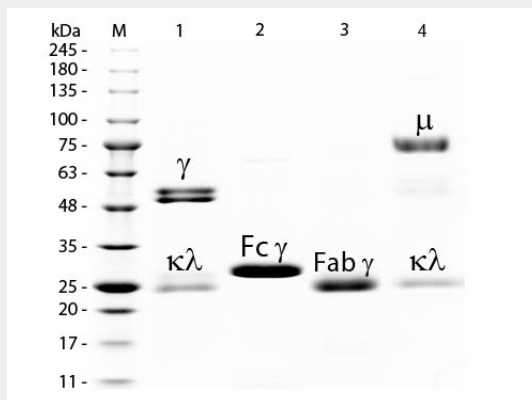
This product is for research use only and is not intended for therapeutic or diagnostic applications.

**Rat IgG F(c) Rhodamine - Protein Information****Rat IgG F(c) Rhodamine - Protocols**

Provided below are standard protocols that you may find useful for product applications.

- [Western Blot](#)
- [Blocking Peptides](#)
- [Dot Blot](#)
- [Immunohistochemistry](#)
- [Immunofluorescence](#)
- [Immunoprecipitation](#)
- [Flow Cytometry](#)
- [Cell Culture](#)

### Rat IgG F(c) Rhodamine - Images



SDS-PAGE of Rat IgG F(c) Fragment Rhodamine Conjugated . Lane M: 3  $\mu$ L Opal Prestained Marker . Lane 1: Reduced Rat IgG Whole Molecule . Lane 2: Reduced Rat IgG F(c) Fragment Rhodamine Conjugated . Lane 3: Reduced Rat IgG F(ab) Fragment . Lane 4: Reduced Rat IgM Whole Molecule . Load: 1  $\mu$ g of IgG, F(c), F(ab); 1.5  $\mu$ g of IgM. Predicted/Observed size: IgG at 55 and 25 kDa; F(c) at 25 kDa; F(ab) at 25 kDa; IgM at 78 and 25 kDa. Observed F(c) Fragment migrates slightly higher.

### Rat IgG F(c) Rhodamine - Background

This product is designed for immunofluorescence microscopy, fluorescence based plate assays (FLISA) and fluorescent western blotting. This product is also suitable for multiplex analysis, including multicolor imaging, utilizing various commercial platforms.