

Anti-Rat IgG (H&L) (ATTO 647N Conjugated) Pre-Adsorbed Secondary Antibody
Goat Polyclonal, ATTO 647N
Catalog # ASR3277**Specification****Anti-Rat IgG (H&L) (ATTO 647N Conjugated) Pre-Adsorbed Secondary Antibody - Product Information**

Description	Anti-RAT IgG (H&L) (GOAT) Antibody ATTO 647N Conjugated (Min X Bv Ch Gt GP Ham Hs Hu Ms Rb & Sh Serum Proteins)
Host	Goat
Conjugate	ATTO 647N
FP Value	2.5 moles ATTO 647N per mole of IgG
Target Species	Rat
Clonality	Polyclonal
Application	,1,3,
Application Note	FLISA >1:20,000;IF Microscopy >1:5,000;Western Blot >1:10,000
Physical State	Lyophilized
Host Isotype	IgG
Target Isotype	IgG (H&L)
Buffer	0.02 M Potassium Phosphate, 0.15 M Sodium Chloride, pH 7.2
Immunogen	Rat IgG whole molecule
Reconstitution Volume	500 µL
Reconstitution Buffer	Restore with deionized water (or equivalent)
Stabilizer	10 mg/mL Bovine Serum Albumin (BSA) - Immunoglobulin and Protease free
Preservative	0.01% (w/v) Sodium Azide

Anti-Rat IgG (H&L) (ATTO 647N Conjugated) Pre-Adsorbed Secondary Antibody - Additional Information**Shipping Condition**

Ambient

Purity

Rat IgG (H&L) Antibody ATTO 647N was prepared from monospecific antiserum by immunoaffinity chromatography using Rat IgG coupled to agarose beads followed by solid phase adsorption(s) to remove any unwanted reactivities. Assay by immunoelectrophoresis resulted in a single precipitin arc against anti-Goat Serum, Rat IgG and Rat Serum. No reaction was observed against Bovine, Chicken, Goat, Guinea Pig, Hamster, Horse, Human, Mouse, Rabbit and Sheep Serum Proteins. This antibody will react with heavy chains of rat IgG and with light chains of most rat immunoglobulins.

Storage Condition

Store vial at 4° C prior to restoration. For extended storage aliquot contents and freeze at -20° C or below. Avoid cycles of freezing and thawing. Centrifuge product if not completely clear after standing at room temperature. This product is stable for several weeks at 4° C as an undiluted

liquid. Dilute only prior to immediate use.

Precautions Note

This product is for research use only and is not intended for therapeutic or diagnostic applications.

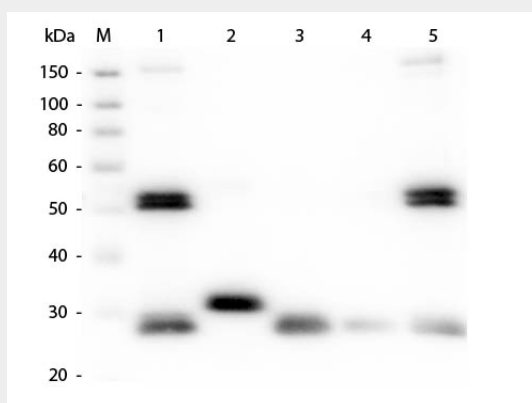
Anti-Rat IgG (H&L) (ATTO 647N Conjugated) Pre-Adsorbed Secondary Antibody - Protein Information

Anti-Rat IgG (H&L) (ATTO 647N Conjugated) Pre-Adsorbed Secondary Antibody - Protocols

Provided below are standard protocols that you may find useful for product applications.

- [Western Blot](#)
- [Blocking Peptides](#)
- [Dot Blot](#)
- [Immunohistochemistry](#)
- [Immunofluorescence](#)
- [Immunoprecipitation](#)
- [Flow Cytometry](#)
- [Cell Culture](#)

Anti-Rat IgG (H&L) (ATTO 647N Conjugated) Pre-Adsorbed Secondary Antibody - Images



Western Blot of Anti-Rat IgG (H&L) (GOAT) Antibody (Min X Bv Ch Gt GP Ham Hs Hu Ms Rb & Sh Serum Proteins) . Lane M: 3 μ l Molecular Ladder. Lane 1: Rat IgG whole molecule . Lane 2: Rat IgG F(c) Fragment . Lane 3: Rat IgG F(ab) Fragment . Lane 4: Rat IgM Whole Molecule . Lane 5: Rat Serum . All samples were reduced. Load: 50 ng per lane. Block: MB-070 for 30 min at RT. Primary Antibody: Anti-Rat IgG (H&L) (GOAT) Antibody (Min X Bv Ch Gt GP Ham Hs Hu Ms Rb & Sh Serum Proteins) 1:1,000 for 60 min at RT. Secondary Antibody: Anti-Goat IgG (DONKEY) Peroxidase Conjugated Antibody 1:40,000 in MB-070 for 30 min at RT. Predicted/Observe Size: 25 and 55 kDa for Rat IgG and Serum, 25 kDa for F(c) and F(ab), 78 and 25 kDa for IgM. Rat F(c) migrates slightly higher.

Anti-Rat IgG (H&L) (ATTO 647N Conjugated) Pre-Adsorbed Secondary Antibody - Background

Anti-Rat IgG (H&L) conjugated to ATTO 647N is designed for STED microscopy, FRET, immunofluorescence microscopy, fluorescence based plate assays (FLISA) and fluorescent western blotting. This product is also suitable for multiplex analysis, including multicolor imaging, utilizing

various commercial platforms.