

Anti-Human IL-1 Receptor Type II Secondary Antibody
Rabbit Polyclonal, Unconjugated
Catalog # ASR3315**Specification****Anti-Human IL-1 Receptor Type II Secondary Antibody - Product Information**

Description	Anti-Human IL-1 Receptor Type II (IL-1RII) (RABBIT) Antibody
Host	Rabbit
Conjugate	Unconjugated
Target Species	Human
Reactivity	Human
Clonality	Polyclonal
Application	,1,5,10,
Application Note	ELISA 1:1,000-1:2,000;Western Blot 1:500-1:2,000ImmunoPrecipitation:1:400-1:800
Physical State	Liquid (sterile filtered)
Host Isotype	Antiserum
Buffer	0.02 M Potassium Phosphate, 0.15 M Sodium Chloride, pH 7.2
Immunogen	This whole rabbit serum was prepared by repeated immunizations with recombinant human IL-1R type II.
Stabilizer	None
Preservative	0.01% (w/v) Sodium Azide

Anti-Human IL-1 Receptor Type II Secondary Antibody - Additional Information**Shipping Condition**

Dry Ice

Purity

This antiserum is directed against the extracellular domain of the human IL-1R type II, but precipitates the intact receptor expressed on human cells. In general, this antibody also detects primate IL-1RII. The antibody does not recognize human IL-1, IL-1Ra or IL-1R type I. In ELISA formats and other immunoreactive assays, this antibody will detect the extracellular domain of the IL-1R type II (also called soluble IL-1R type II) found in human body fluids, particularly in the circulation, urine and supernatants of cells and synovial fluid.

Storage Condition

Store vial at -20° C prior to opening. Aliquot contents and freeze at -20° C or below for extended storage. Avoid cycles of freezing and thawing. Centrifuge product if not completely clear after standing at room temperature. This product is stable for several weeks at 4° C as an undiluted liquid. Dilute only prior to immediate use.

Precautions Note

This product is for research use only and is not intended for therapeutic or diagnostic applications.

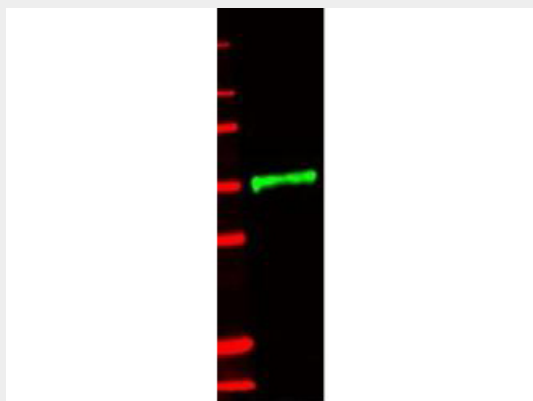
Anti-Human IL-1 Receptor Type II Secondary Antibody - Protein Information

Anti-Human IL-1 Receptor Type II Secondary Antibody - Protocols

Provided below are standard protocols that you may find useful for product applications.

- [Western Blot](#)
- [Blocking Peptides](#)
- [Dot Blot](#)
- [Immunohistochemistry](#)
- [Immunofluorescence](#)
- [Immunoprecipitation](#)
- [Flow Cytometry](#)
- [Cell Culture](#)

Anti-Human IL-1 Receptor Type II Secondary Antibody - Images



Western blot using Abcepta's anti-IL-1RII antibody. This blot shows detection of an IL-1RII-GST fusion protein (~500 ng, lane 1, green, 800 nm channel). Minimal reactivity is observed against GST (data not shown). Protein was resolved on a 4-20% Tris-Glycine gel by SDS-PAGE and transferred onto nitrocellulose. After blocking, the membrane was probed with the primary antibody diluted to 1:1,000. Incubation was for 2 hrs at room temperature followed by washes and reaction with a 1:10,000 dilution of IRDye® 800 conjugated Gt-a-Rabbit IgG (H&L) MX10 (611-132-122) for 45 min at room temperature. Molecular weight markers are shown for size comparison (lane M, red, 700 nm channel). IRDye® 800 fluorescence image was captured using the Odyssey® Infrared Imaging System developed by LI-COR. IRDye is a trademark of LI-COR, Inc. Other detection systems will yield similar results.