

**Anti-Chicken IgG (H&L) Secondary Antibody**  
**Rabbit Polyclonal, Unconjugated**  
**Catalog # ASR3329****Specification**

---

**Anti-Chicken IgG (H&L) Secondary Antibody - Product Information**

Description	<b>Anti-CHICKEN IgG (H&amp;L) (RABBIT)</b>
Host	<b>Antibody</b>
Conjugate	<b>Rabbit</b>
Target Species	<b>Unconjugated</b>
Reactivity	<b>Chicken</b>
Clonality	<b>Chicken</b>
Application	<b>Polyclonal</b>
Application Note	<b>,1,10,15,</b>
	<b>ELISA 1:1,000,000;Western Blot</b>
	<b>1:20,000-1:100,000;Immunochemistry</b>
	<b>1:1,000-1:5,000</b>
Physical State	<b>Liquid (sterile filtered)</b>
Host Isotype	<b>IgG</b>
Target Isotype	<b>IgG (H&amp;L)</b>
Buffer	<b>0.02 M Potassium Phosphate, 0.15 M</b>
	<b>Sodium Chloride, pH 7.2</b>
Immunogen	<b>Anti-Chicken IgG (H&amp;L) was produced by</b>
	<b>repeated immunization with Chicken IgG</b>
	<b>whole molecule in rabbit.</b>
Stabilizer	<b>None</b>
Preservative	<b>0.01% (w/v) Sodium Azide</b>

**Anti-Chicken IgG (H&L) Secondary Antibody - Additional Information****Shipping Condition**

Wet Ice

**Purity**

This product was prepared from monospecific antiserum by immunoaffinity chromatography using Chicken IgG coupled to agarose beads. Assay by immunoelectrophoresis resulted in a single precipitin arc against anti-Rabbit Serum and Chicken IgG. Some light chain cross reactivity may be observed against chicken immunoglobulins.

**Storage Condition**

Store vial at 4° C prior to opening. This product is stable at 4° C as an undiluted liquid. Dilute only prior to immediate use. For extended storage, aliquot contents and freeze at -20° C or below. Avoid cycles of freezing and thawing.

**Precautions Note**

This product is for research use only and is not intended for therapeutic or diagnostic applications.

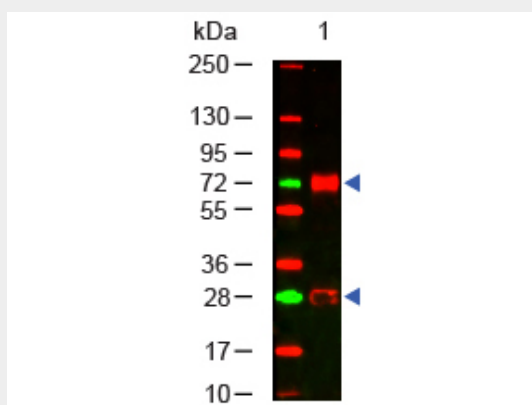
**Anti-Chicken IgG (H&L) Secondary Antibody - Protein Information**

## Anti-Chicken IgG (H&L) Secondary Antibody - Protocols

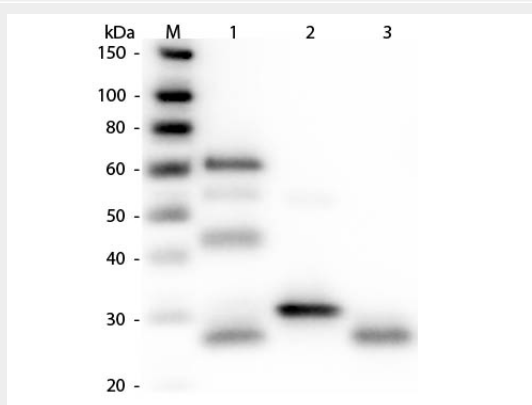
Provided below are standard protocols that you may find useful for product applications.

- [Western Blot](#)
- [Blocking Peptides](#)
- [Dot Blot](#)
- [Immunohistochemistry](#)
- [Immunofluorescence](#)
- [Immunoprecipitation](#)
- [Flow Cytometry](#)
- [Cell Culture](#)

## Anti-Chicken IgG (H&L) Secondary Antibody - Images



Western Blot of Rabbit anti-Chicken IgG Antibody. Lane 1: Chicken IgG. Lane 2: None. Load: 100 ng per lane. Primary antibody: Chicken IgG antibody at 1:1000 for overnight at 4°C. Secondary antibody: DyLight™ 649 rabbit secondary antibody at 1:20,000 for 30 min at RT. Block: 5% BLOTTO 30 min at RT. Predicted/Observed size: 72 and 28 kDa, 72 and 28 kDa for Chicken IgG. Other band(s): none.



Western Blot of Anti-Chicken IgG (H&L) (RABBIT) Antibody . Lane M: 3 µl Molecular Ladder. Lane 1: Chicken IgG whole molecule . Lane 2: Chicken IgG F(c) Fragment . Lane 3: Chicken IgG F(ab) Fragment . All samples were reduced. Load: 50 ng per lane. Block: MB-070 for 30 min at RT. Primary Antibody: Anti-Chicken IgG (H&L) (RABBIT) Antibody 1:3,000 for 60 min at RT. Secondary antibody: Anti-Rabbit IgG (GOAT) Peroxidase Conjugated Antibody 1:40,000 in MB-070 for 30 min at RT. Predicted/Obsevered Size: 25 and 72 kDa for Chicken IgG, 25 kDa for F(c) and F(ab). Chicken F(c) migrates slightly higher.

**Anti-Chicken IgG (H&L) Secondary Antibody - Background**

Anti-Chicken IgG antibody generated in rabbit detects specifically chicken IgG. This secondary antibody anti-Chicken is ideal for investigators who routinely perform ELISA, Sandwich ELISA, titration assays, western-blot, immunoprecipitation and more generally immunoassays.