

**RAT IgG (BULK ORDER)**  
**Catalog # ASR3582****Specification**

---

**RAT IgG (BULK ORDER) - Product Information**

Description	<b>RAT IgG whole molecule (BULK ORDER)</b>
Conjugate	<b>Unconjugated</b>
Physical State	<b>Lyophilized</b>
Host Isotype	<b>IgG</b>
Buffer	<b>0.02 M Potassium Phosphate, 0.15 M Sodium Chloride, pH 7.2</b>
Species of Origin	<b>Rat</b>
Reconstitution Volume	<b>1.0 mL</b>
Reconstitution Buffer	<b>Restore with deionized water (or equivalent)</b>
Stabilizer	<b>None</b>
Preservative	<b>0.01% (w/v) Sodium Azide</b>

**RAT IgG (BULK ORDER) - Additional Information****Shipping Condition**

Ambient

**Purity**

Rat IgG was prepared from normal serum by a multi-step process which includes delipidation, salt fractionation and ion exchange chromatography followed by extensive dialysis against the buffer stated above. Assay by immunoelectrophoresis resulted in a single precipitin arc against anti-Rat IgG and anti-Rat Serum.

**Storage Condition**

Store vial at 4° C prior to restoration. For extended storage aliquot contents and freeze at -20° C or below. Avoid cycles of freezing and thawing. Centrifuge product if not completely clear after standing at room temperature. This product is stable for several weeks at 4° C as an undiluted liquid. Dilute only prior to immediate use.

**Precautions Note**

This product is for research use only and is not intended for therapeutic or diagnostic applications.

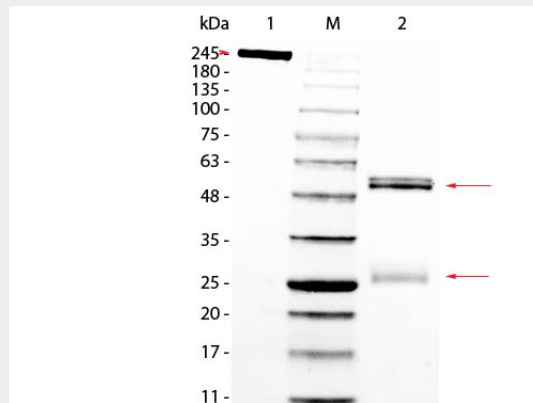
**RAT IgG (BULK ORDER) - Protein Information****RAT IgG (BULK ORDER) - Protocols**

Provided below are standard protocols that you may find useful for product applications.

- [Western Blot](#)
- [Blocking Peptides](#)

- [Dot Blot](#)
- [Immunohistochemistry](#)
- [Immunofluorescence](#)
- [Immunoprecipitation](#)
- [Flow Cytometry](#)
- [Cell Culture](#)

### **RAT IgG (BULK ORDER) - Images**



SDS PAGE of Rat IgG Whole Molecule. Lane 1: Non-Reduced Rat IgG Whole Molecule. Lane 2: 5 µL Opal Prestained Marker . Lane 3: Reduced Rat IgG Whole Molecule. Load: 1 µg per lane. Predicted/Observed size: Non-Reduced at 160kDa/Observed at 245 kDa; Reduced at 55, 25 kDa. Non-reduced IgG migrates slightly higher.

### **RAT IgG (BULK ORDER) - Background**

Rat IgG purified protein (Immunoglobulin G) are antibody molecules. Rat IgG is composed of four peptide chains — two heavy chains and two light chains. Rat IgG has two antigen binding sites. Other Immunoglobulins may be described in terms of polymers with the IgG structure considered the monomer. Rat IgG typically constitutes 75% of serum immunoglobulins. Rat IgG molecules are synthesized and secreted by plasma B cells.