

ACD Antibody (monoclonal) (M02)**Mouse monoclonal antibody raised against a full length recombinant ACD.****Catalog # AT1023a****Specification**

ACD Antibody (monoclonal) (M02) - Product Information

Application	IF, IP, WB, IHC, E
Primary Accession	Q96AP0
Other Accession	BC016904
Reactivity	Human
Host	mouse
Clonality	Monoclonal
Isotype	IgG1 Kappa
Calculated MW	48967

ACD Antibody (monoclonal) (M02) - Additional Information**Gene ID** 65057**Other Names**

Adrenocortical dysplasia protein homolog, POT1 and TIN2-interacting protein, ACD, PIP1, PTOP, TINT1, TPP1

Target/Specificity

ACD (AAH16904, 1 a.a. ~ 544 a.a) full-length recombinant protein with GST tag. MW of the GST tag alone is 26 KDa.

Dilution

WB~~1:500~1000

Format

Clear, colorless solution in phosphate buffered saline, pH 7.2 .

Storage

Store at -20°C or lower. Aliquot to avoid repeated freezing and thawing.

Precautions

ACD Antibody (monoclonal) (M02) is for research use only and not for use in diagnostic or therapeutic procedures.

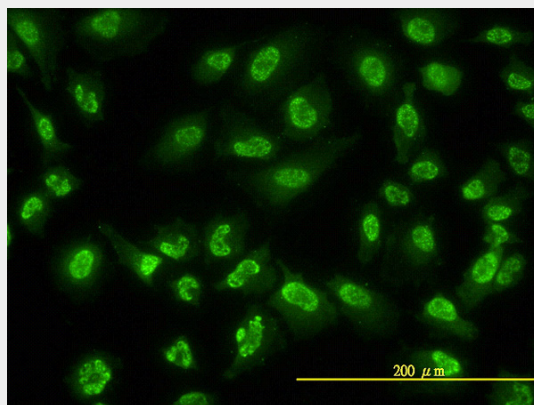
ACD Antibody (monoclonal) (M02) - Protocols

Provided below are standard protocols that you may find useful for product applications.

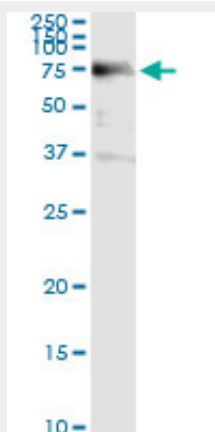
- [Western Blot](#)
- [Blocking Peptides](#)
- [Dot Blot](#)

- [Immunohistochemistry](#)
- [Immunofluorescence](#)
- [Immunoprecipitation](#)
- [Flow Cytometry](#)
- [Cell Culture](#)

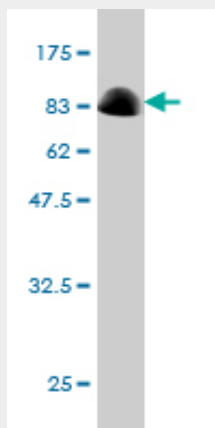
ACD Antibody (monoclonal) (M02) - Images



Immunofluorescence of monoclonal antibody to ACD on HeLa cell. [antibody concentration 10 ug/ml]

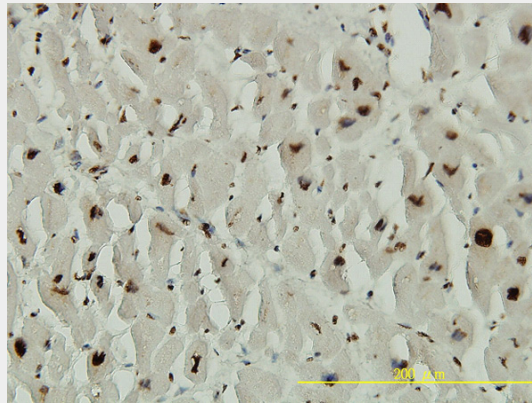


Immunoprecipitation of ACD transfected lysate using anti-ACD monoclonal antibody and Protein A Magnetic Bead ([U0007](#)), and immunoblotted with ACD MaxPab rabbit polyclonal antibody.

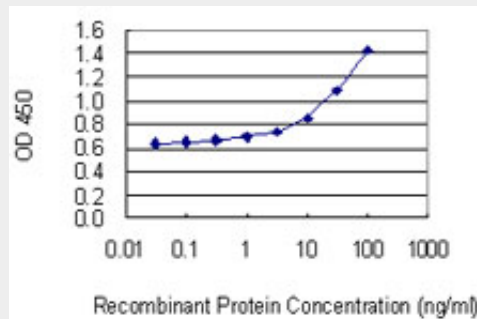


Antibody Reactive Against Recombinant Protein. Western Blot detection against Immunogen

(85.58 KDa) .



Immunoperoxidase of monoclonal antibody to ACD on formalin-fixed paraffin-embedded human heart tissue. [antibody concentration 2 ug/ml]



Detection limit for recombinant GST tagged ACD is 0.3 ng/ml as a capture antibody.

ACD Antibody (monoclonal) (M02) - Background

This gene encodes a protein that is involved in telomere function. This protein is one of six core proteins in the telosome/shelterin telomeric complex, which functions to maintain telomere length and to protect telomere ends. Through its interaction with other components, this protein plays a key role in the assembly and stabilization of this complex, and it mediates the access of telomerase to the telomere. Multiple transcript variants encoding different isoforms have been found for this gene. This gene, which is also referred to as TPP1, is distinct from the unrelated TPP1 gene on chromosome 11, which encodes tripeptidyl-peptidase I.

ACD Antibody (monoclonal) (M02) - References

1. TIN2-tethered TPP1 recruits human telomerase to telomeres in vivo. Abreu E, Aritonovska E, Reichenbach P, Cristofari G, Culp B, Terns RM, Lingner J, Terns MP. Mol Cell Biol. 2010 Apr 19. [Epub ahead of print]