

**ALDH1L1 Antibody (monoclonal) (M01)****Mouse monoclonal antibody raised against a partial recombinant ALDH1L1.****Catalog # AT1111a****Specification**

---

**ALDH1L1 Antibody (monoclonal) (M01) - Product Information**

Application	IF, WB, IHC, E
Primary Accession	<a href="#">O75891</a>
Other Accession	<a href="#">NM_012190</a>
Reactivity	Human, Mouse
Host	mouse
Clonality	Monoclonal
Isotype	IgG3 Kappa
Calculated MW	98829

**ALDH1L1 Antibody (monoclonal) (M01) - Additional Information****Gene ID** 10840**Other Names**

Cytosolic 10-formyltetrahydrofolate dehydrogenase, 10-FTHFDH, FDH, Aldehyde dehydrogenase family 1 member L1, ALDH1L1, FTHFD

**Target/Specificity**

ALDH1L1 (NP\_036322, 803 a.a. ~ 902 a.a) partial recombinant protein with GST tag. MW of the GST tag alone is 26 KDa.

**Dilution**

WB~~1:500~1000

**Format**

Clear, colorless solution in phosphate buffered saline, pH 7.2 .

**Storage**

Store at -20°C or lower. Aliquot to avoid repeated freezing and thawing.

**Precautions**

ALDH1L1 Antibody (monoclonal) (M01) is for research use only and not for use in diagnostic or therapeutic procedures.

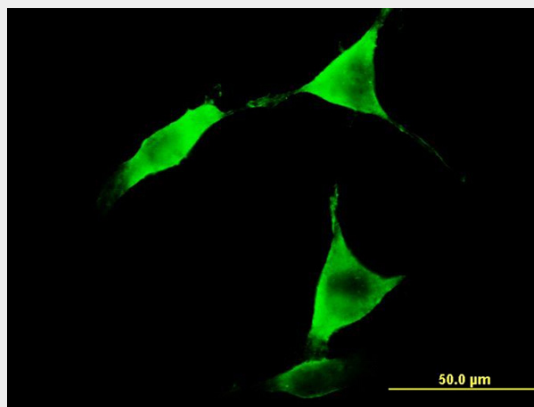
**ALDH1L1 Antibody (monoclonal) (M01) - Protocols**

Provided below are standard protocols that you may find useful for product applications.

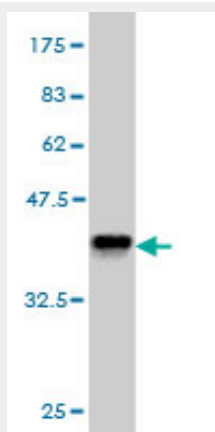
- [Western Blot](#)
- [Blocking Peptides](#)
- [Dot Blot](#)

- [Immunohistochemistry](#)
- [Immunofluorescence](#)
- [Immunoprecipitation](#)
- [Flow Cytometry](#)
- [Cell Culture](#)

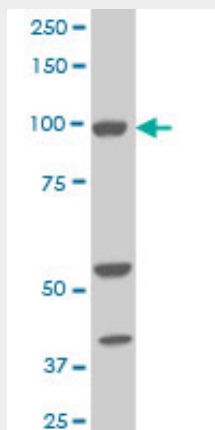
#### ALDH1L1 Antibody (monoclonal) (M01) - Images



Immunofluorescence of monoclonal antibody to ALDH1L1 on NIH/3T3 cell. [antibody concentration 10 ug/ml]

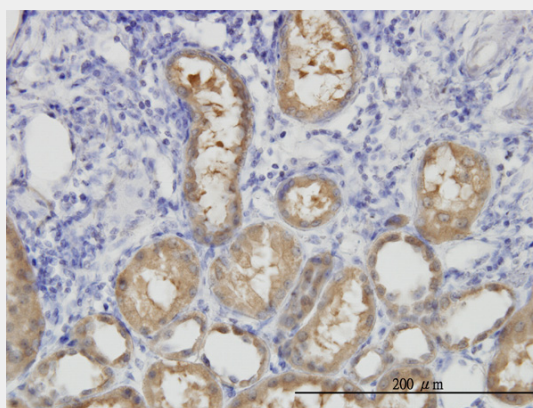


Antibody Reactive Against Recombinant Protein. Western Blot detection against Immunogen (36.74 KDa) .

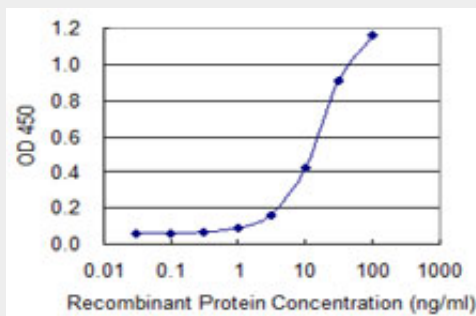


ALDH1L1 monoclonal antibody (M01), clone 3E9 Western Blot analysis of ALDH1L1 expression in

NIH/3T3 ( (Cat # AT1111a )



Immunoperoxidase of monoclonal antibody to ALDH1L1 on formalin-fixed paraffin-embedded human kidney. [antibody concentration 3 ug/ml]



Detection limit for recombinant GST tagged ALDH1L1 is 0.3 ng/ml as a capture antibody.

#### **ALDH1L1 Antibody (monoclonal) (M01) - Background**

The protein encoded by this gene catalyzes the conversion of 10-formyltetrahydrofolate, NADP, and water to tetrahydrofolate, NADPH, and carbon dioxide. The encoded protein belongs to the aldehyde dehydrogenase family and is responsible for formate oxidation in vivo. Deficiencies in this gene can result in an accumulation of formate and subsequent methanol poisoning.

#### **ALDH1L1 Antibody (monoclonal) (M01) - References**

Maternal genes and facial clefts in offspring: a comprehensive search for genetic associations in two population-based cleft studies from Scandinavia. Jugessur A, et al. PLoS One, 2010 Jul 9. PMID 20634891. Variation at the NFATC2 Locus Increases the Risk of Thiazolidinedione-Induced Edema in the Diabetes REDuction Assessment with ramipril and rosiglitazone Medication (DREAM) Study. Bailey SD, et al. Diabetes Care, 2010 Jul 13. PMID 20628086. A Large-scale genetic association study of esophageal adenocarcinoma risk. Liu CY, et al. Carcinogenesis, 2010 Jul. PMID 20453000. Association of genetic variants with hemorrhagic stroke in Japanese individuals. Yoshida T, et al. Int J Mol Med, 2010 Apr. PMID 20198315. Germline polymorphisms in the one-carbon metabolism pathway and DNA methylation in colorectal cancer. Hazra A, et al. Cancer Causes Control, 2010 Mar. PMID 19936946.