

**ARMCX1 Antibody (monoclonal) (M01)****Mouse monoclonal antibody raised against a partial recombinant ARMCX1.****Catalog # AT1197a****Specification**

---

**ARMCX1 Antibody (monoclonal) (M01) - Product Information**

Application	WB, E
Primary Accession	<a href="#">O9P291</a>
Other Accession	<a href="#">NM_016608</a>
Reactivity	Human
Host	mouse
Clonality	Monoclonal
Isotype	IgG3 Kappa
Calculated MW	49180

**ARMCX1 Antibody (monoclonal) (M01) - Additional Information****Gene ID** 51309**Other Names**

Armadillo repeat-containing X-linked protein 1, ARM protein lost in epithelial cancers on chromosome X 1, Protein ALEX1, ARMCX1, ALEX1

**Target/Specificity**

ARMCX1 (NP\_057692, 188 a.a. ~ 295 a.a) partial recombinant protein with GST tag. MW of the GST tag alone is 26 KDa.

**Dilution**

WB~~1:500~1000

**Format**

Clear, colorless solution in phosphate buffered saline, pH 7.2 .

**Storage**

Store at -20°C or lower. Aliquot to avoid repeated freezing and thawing.

**Precautions**

ARMCX1 Antibody (monoclonal) (M01) is for research use only and not for use in diagnostic or therapeutic procedures.

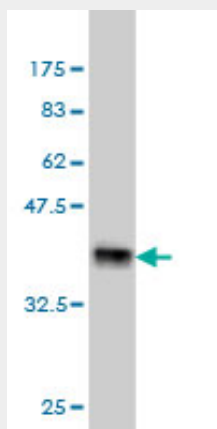
**ARMCX1 Antibody (monoclonal) (M01) - Protocols**

Provided below are standard protocols that you may find useful for product applications.

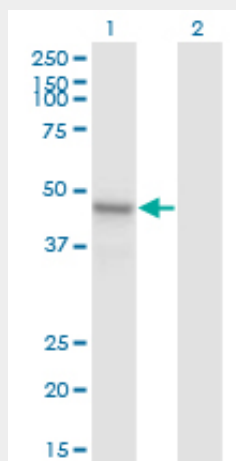
- [Western Blot](#)
- [Blocking Peptides](#)
- [Dot Blot](#)

- [Immunohistochemistry](#)
- [Immunofluorescence](#)
- [Immunoprecipitation](#)
- [Flow Cytometry](#)
- [Cell Culture](#)

### ARMCX1 Antibody (monoclonal) (M01) - Images



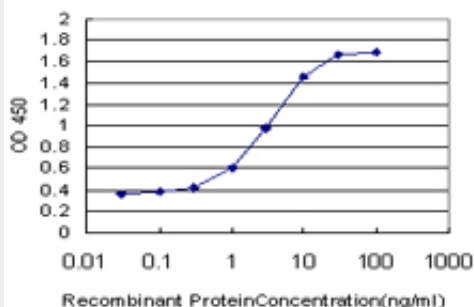
Antibody Reactive Against Recombinant Protein. Western Blot detection against Immunogen (37.62 kDa) .



Western Blot analysis of ARM CX1 expression in transfected 293T cell line by ARM CX1 monoclonal antibody (M01), clone 6E10.

Lane 1: ARM CX1 transfected lysate (Predicted MW: 49.2 kDa).

Lane 2: Non-transfected lysate.



Detection limit for recombinant GST tagged ARM CX1 is approximately 0.03ng/ml as a capture antibody.

### **ARM CX1 Antibody (monoclonal) (M01) - Background**

This gene encodes a member of the ALEX family of proteins and may play a role in tumor suppression. The encoded protein contains a potential N-terminal transmembrane domain and two Armadillo (arm) repeats. Other proteins containing the arm repeat are involved in development, maintenance of tissue integrity, and tumorigenesis. This gene is closely localized with other family members, including ALEX2 and ALEX3, on the X chromosome.

### **ARM CX1 Antibody (monoclonal) (M01) - References**

Human Arm protein lost in epithelial cancers, on chromosome X 1 (ALEX1) gene is transcriptionally regulated by CREB and Wnt/beta-catenin signaling. Iseki H, et al. Cancer Sci, 2010 Jun. PMID 20398052. Signal sequence and keyword trap in silico for selection of full-length human cDNAs encoding secretion or membrane proteins from oligo-capped cDNA libraries. Otsuki T, et al. DNA Res, 2005. PMID 16303743. The DNA sequence of the human X chromosome. Ross MT, et al. Nature, 2005 Mar 17. PMID 15772651. The status, quality, and expansion of the NIH full-length cDNA project: the Mammalian Gene Collection (MGC). Gerhard DS, et al. Genome Res, 2004 Oct. PMID 15489334. Complete sequencing and characterization of 21,243 full-length human cDNAs. Ota T, et al. Nat Genet, 2004 Jan. PMID 14702039.