

**ARPC2 Antibody (monoclonal) (M01)****Mouse monoclonal antibody raised against a full length recombinant ARPC2.****Catalog # AT1200a****Specification**

---

**ARPC2 Antibody (monoclonal) (M01) - Product Information**

|                   |                          |
|-------------------|--------------------------|
| Application       | WB, E                    |
| Primary Accession | <a href="#">O15144</a>   |
| Other Accession   | <a href="#">BC000590</a> |
| Reactivity        | Human, Mouse, Rat        |
| Host              | mouse                    |
| Clonality         | Monoclonal               |
| Isotype           | IgG2b Kappa              |
| Calculated MW     | 34333                    |

**ARPC2 Antibody (monoclonal) (M01) - Additional Information****Gene ID** 10109**Other Names**

Actin-related protein 2/3 complex subunit 2, Arp2/3 complex 34 kDa subunit, p34-ARC, ARPC2, ARC34

**Target/Specificity**

ARPC2 (AAH00590, 1 a.a. ~ 300 a.a) full-length recombinant protein with GST tag. MW of the GST tag alone is 26 KDa.

**Dilution**

WB~~1:500~1000

**Format**

Clear, colorless solution in phosphate buffered saline, pH 7.2 .

**Storage**

Store at -20°C or lower. Aliquot to avoid repeated freezing and thawing.

**Precautions**

ARPC2 Antibody (monoclonal) (M01) is for research use only and not for use in diagnostic or therapeutic procedures.

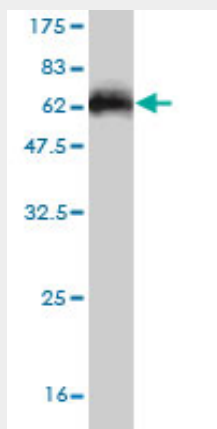
**ARPC2 Antibody (monoclonal) (M01) - Protocols**

Provided below are standard protocols that you may find useful for product applications.

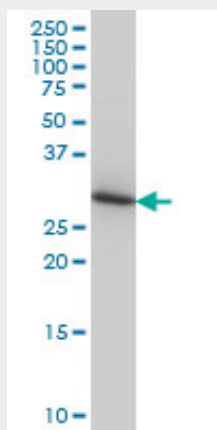
- [Western Blot](#)
- [Blocking Peptides](#)
- [Dot Blot](#)

- [Immunohistochemistry](#)
- [Immunofluorescence](#)
- [Immunoprecipitation](#)
- [Flow Cytometry](#)
- [Cell Culture](#)

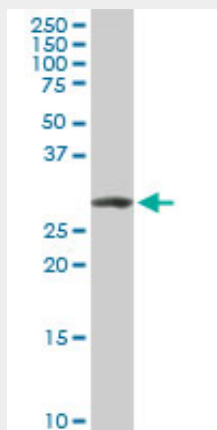
## ARPC2 Antibody (monoclonal) (M01) - Images



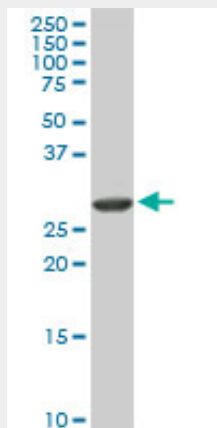
Antibody Reactive Against Recombinant Protein. Western Blot detection against Immunogen (58.74 kDa) .



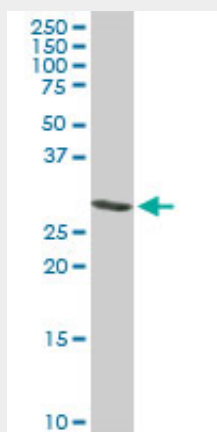
ARPC2 monoclonal antibody (M01), clone 5C8 Western Blot analysis of ARPC2 expression in HeLa (Cat # AT1200a)



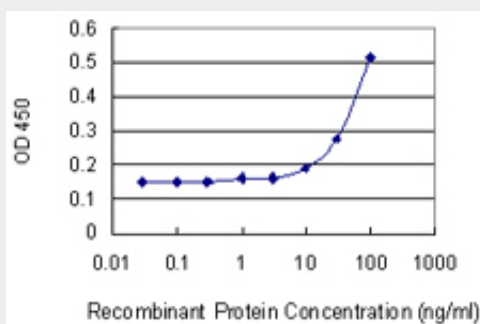
ARPC2 monoclonal antibody (M01), clone 5C8. Western Blot analysis of ARPC2 expression in PC-12 (Cat # AT1200a)



ARPC2 monoclonal antibody (M01), clone 5C8. Western Blot analysis of ARPC2 expression in Raw 264.7 (Cat # AT1200a)



ARPC2 monoclonal antibody (M01), clone 5C8. Western Blot analysis of ARPC2 expression in NIH/3T3 (Cat # AT1200a)



Detection limit for recombinant GST tagged ARPC2 is 3 ng/ml as a capture antibody.

#### ARPC2 Antibody (monoclonal) (M01) - Background

This gene encodes one of seven subunits of the human Arp2/3 protein complex. The Arp2/3 protein complex has been implicated in the control of actin polymerization in cells and has been conserved through evolution. The exact role of the protein encoded by this gene, the p34 subunit, has yet to be determined. Two alternatively spliced variants have been characterized to date. Additional alternatively spliced variants have been described but their full length nature has not been determined.

**ARPC2 Antibody (monoclonal) (M01) - References**

Functional characterization of Wiskott-Aldrich syndrome protein and scar homolog (WASH), a bi-modular nucleation-promoting factor able to interact with biogenesis of lysosome-related organelle subunit 2 (BLOS2) and gamma-tubulin. Monfregola J, et al. J Biol Chem, 2010 May 28. PMID 20308062. Genetic analysis in a Dutch study sample identifies more ulcerative colitis susceptibility loci and shows their additive role in disease risk. Festen EA, et al. Am J Gastroenterol, 2010 Feb. PMID 19861958. Sequence variants in IL10, ARPC2 and multiple other loci contribute to ulcerative colitis susceptibility. Franke A, et al. Nat Genet, 2008 Nov. PMID 18836448. Overexpression of N-WASP in the brain of human epilepsy. Xiao F, et al. Brain Res, 2008 Oct 3. PMID 18708039. Toward a confocal subcellular atlas of the human proteome. Barbe L, et al. Mol Cell Proteomics, 2008 Mar. PMID 18029348.