

**ASB10 Antibody (monoclonal) (M02)****Mouse monoclonal antibody raised against a partial recombinant ASB10.****Catalog # AT1209a****Specification**

---

**ASB10 Antibody (monoclonal) (M02) - Product Information**

Application	WB, E
Primary Accession	<a href="#">Q8WXI3</a>
Other Accession	<a href="#">NM_001142459</a>
Reactivity	Human, Mouse, Rat
Host	Mouse
Clonality	Monoclonal
Isotype	IgG2a Kappa
Calculated MW	50894

**ASB10 Antibody (monoclonal) (M02) - Additional Information****Gene ID** 136371**Other Names**

Ankyrin repeat and SOCS box protein 10, ASB-10, ASB10

**Target/Specificity**

ASB10 (NP\_001135931, 48 a.a. ~ 153 a.a) partial recombinant protein with GST tag. MW of the GST tag alone is 26 KDa.

**Dilution**

WB~~1:500~1000

**Format**

Clear, colorless solution in phosphate buffered saline, pH 7.2 .

**Storage**

Store at -20°C or lower. Aliquot to avoid repeated freezing and thawing.

**Precautions**

ASB10 Antibody (monoclonal) (M02) is for research use only and not for use in diagnostic or therapeutic procedures.

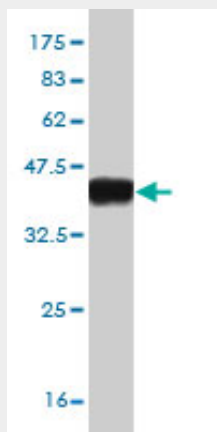
**ASB10 Antibody (monoclonal) (M02) - Protocols**

Provided below are standard protocols that you may find useful for product applications.

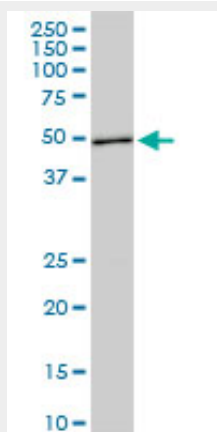
- [Western Blot](#)
- [Blocking Peptides](#)
- [Dot Blot](#)
- [Immunohistochemistry](#)

- [Immunofluorescence](#)
- [Immunoprecipitation](#)
- [Flow Cytometry](#)
- [Cell Culture](#)

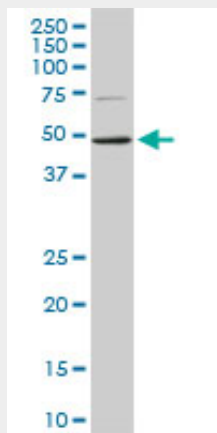
#### ASB10 Antibody (monoclonal) (M02) - Images



Antibody Reactive Against Recombinant Protein. Western Blot detection against Immunogen (37.4 KDa) .

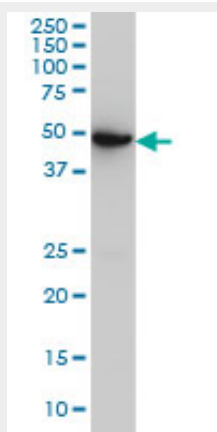


ASB10 monoclonal antibody (M02), clone 1F3. Western Blot analysis of ASB10 expression in PC-12 ( (Cat # AT1209a )

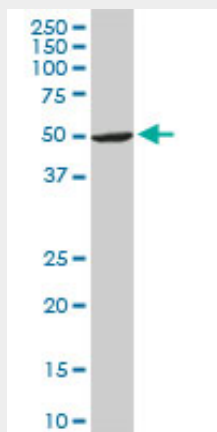


ASB10 monoclonal antibody (M02), clone 1F3. Western Blot analysis of ASB10 expression in Raw

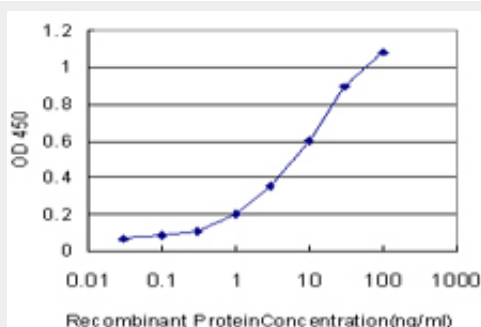
264.7 ( (Cat # AT1209a )



ASB10 monoclonal antibody (M02), clone 1F3 Western Blot analysis of ASB10 expression in A-431 ( (Cat # AT1209a )



ASB10 monoclonal antibody (M02), clone 1F3. Western Blot analysis of ASB10 expression in NIH/3T3 ( (Cat # AT1209a )



Detection limit for recombinant GST tagged ASB10 is approximately 0.1ng/ml as a capture antibody.

### ASB10 Antibody (monoclonal) (M02) - Background

The protein encoded by this gene is a member of the ankyrin repeat and SOCS box-containing (ASB) family of proteins. The SOCS box serves to couple suppressor of cytokine signaling (SOCS) proteins and their binding partners with the elongin B and C complex, possibly targeting them for degradation. Multiple alternatively spliced transcript variants have been described for this gene.

### ASB10 Antibody (monoclonal) (M02) - References

Diversification of transcriptional modulation: large-scale identification and characterization of putative alternative promoters of human genes. Kimura K, et al. Genome Res, 2006 Jan. PMID 16344560. ASB proteins interact with Cullin5 and Rbx2 to form E3 ubiquitin ligase complexes. Kohroki J, et al. FEBS Lett, 2005 Dec 19. PMID 16325183. The status, quality, and expansion of the NIH full-length cDNA project: the Mammalian Gene Collection (MGC). Gerhard DS, et al. Genome Res, 2004 Oct. PMID 15489334. Complete sequencing and characterization of 21,243 full-length human cDNAs. Ota T, et al. Nat Genet, 2004 Jan. PMID 14702039. Human chromosome 7: DNA sequence and biology. Scherer SW, et al. Science, 2003 May 2. PMID 12690205.