

**BLMH Antibody (monoclonal) (M02)****Mouse monoclonal antibody raised against a partial recombinant BLMH.****Catalog # AT1300a****Specification**

---

**BLMH Antibody (monoclonal) (M02) - Product Information**

Application	WB, E
Primary Accession	<a href="#">Q13867</a>
Other Accession	<a href="#">NM_000386</a>
Reactivity	Human
Host	mouse
Clonality	Monoclonal
Isotype	IgG2a Kappa
Calculated MW	52562

**BLMH Antibody (monoclonal) (M02) - Additional Information****Gene ID** 642**Other Names**

Bleomycin hydrolase, BH, BLM hydrolase, BMH, BLMH

**Target/Specificity**

BLMH (NP\_000377, 356 a.a. ~ 454 a.a) partial recombinant protein with GST tag. MW of the GST tag alone is 26 KDa.

**Dilution**

WB~~1:500~1000

**Format**

Clear, colorless solution in phosphate buffered saline, pH 7.2 .

**Storage**

Store at -20°C or lower. Aliquot to avoid repeated freezing and thawing.

**Precautions**

BLMH Antibody (monoclonal) (M02) is for research use only and not for use in diagnostic or therapeutic procedures.

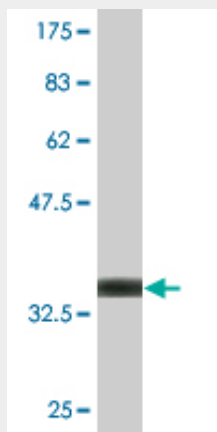
**BLMH Antibody (monoclonal) (M02) - Protocols**

Provided below are standard protocols that you may find useful for product applications.

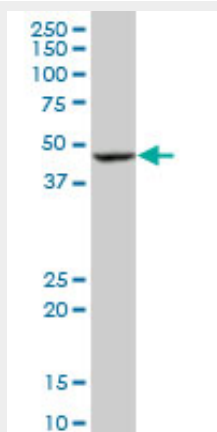
- [Western Blot](#)
- [Blocking Peptides](#)
- [Dot Blot](#)
- [Immunohistochemistry](#)

- [Immunofluorescence](#)
- [Immunoprecipitation](#)
- [Flow Cytometry](#)
- [Cell Culture](#)

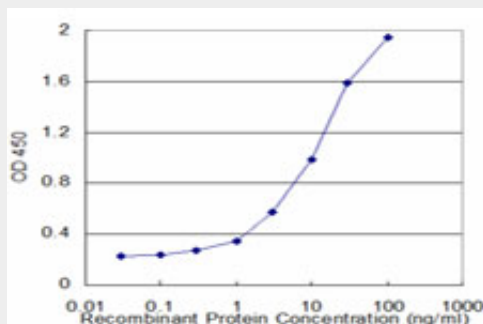
### BLMH Antibody (monoclonal) (M02) - Images



Antibody Reactive Against Recombinant Protein. Western Blot detection against Immunogen (36.63 kDa) .



BLMH monoclonal antibody (M02), clone 4A2. Western Blot analysis of BLMH expression in K-562 (Cat # AT1300a)



Detection limit for recombinant GST tagged BLMH is approximately 0.3ng/ml as a capture antibody.

### BLMH Antibody (monoclonal) (M02) - Background

Bleomycin hydrolase (BMH) is a cytoplasmic cysteine peptidase that is highly conserved through evolution; however, the only known activity of the enzyme is metabolic inactivation of the glycopeptide bleomycin (BLM), an essential component of combination chemotherapy regimens for cancer. The protein contains the signature active site residues of the cysteine protease papain superfamily.

#### **BLMH Antibody (monoclonal) (M02) - References**

Defining the human deubiquitinating enzyme interaction landscape. Sowa ME, et al. Cell, 2009 Jul 23. PMID 19615732. Variation in bleomycin hydrolase gene is associated with reduced survival after chemotherapy for testicular germ cell cancer. de Haas EC, et al. J Clin Oncol, 2008 Apr 10. PMID 18398146. Micronuclei frequency induced by bleomycin in human peripheral lymphocytes: correlating BLHX polymorphism with mutagen sensitivity. Maffei F, et al. Mutat Res, 2008 Mar 1. PMID 18082847. Meta-analysis of genetic variability in the beta-amyloid production, aggregation and degradation metabolic pathways and the risk of Alzheimer's disease. Llorca J, et al. Acta Neurol Scand, 2008 Jan. PMID 17854420. Towards a proteome-scale map of the human protein-protein interaction network. Rual JF, et al. Nature, 2005 Oct 20. PMID 16189514.