

**BVES Antibody (monoclonal) (M02)****Mouse monoclonal antibody raised against a partial recombinant BVES.****Catalog # AT1322a****Specification**

---

**BVES Antibody (monoclonal) (M02) - Product Information**

Application	WB, E
Primary Accession	<a href="#">Q8NE79</a>
Other Accession	<a href="#">NM_007073</a>
Reactivity	Human, Rat
Host	mouse
Clonality	Monoclonal
Isotype	IgG2a Kappa
Calculated MW	41451

**BVES Antibody (monoclonal) (M02) - Additional Information****Gene ID** 11149**Other Names**

Blood vessel epicardial substance, hBVES, Popeye domain-containing protein 1, Popeye protein 1, BVES, POP1, POPDC1

**Target/Specificity**

BVES (NP\_009004, 262 a.a. ~ 360 a.a) partial recombinant protein with GST tag. MW of the GST tag alone is 26 KDa.

**Dilution**

WB~~1:500~1000

**Format**

Clear, colorless solution in phosphate buffered saline, pH 7.2 .

**Storage**

Store at -20°C or lower. Aliquot to avoid repeated freezing and thawing.

**Precautions**

BVES Antibody (monoclonal) (M02) is for research use only and not for use in diagnostic or therapeutic procedures.

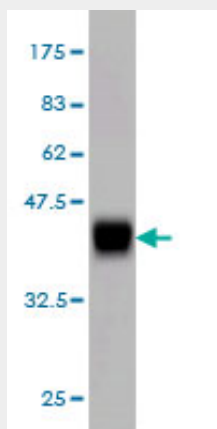
**BVES Antibody (monoclonal) (M02) - Protocols**

Provided below are standard protocols that you may find useful for product applications.

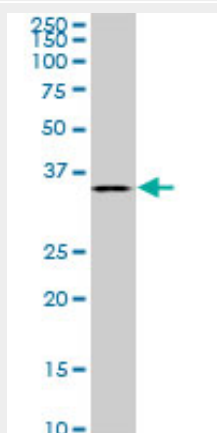
- [Western Blot](#)
- [Blocking Peptides](#)
- [Dot Blot](#)

- [Immunohistochemistry](#)
- [Immunofluorescence](#)
- [Immunoprecipitation](#)
- [Flow Cytometry](#)
- [Cell Culture](#)

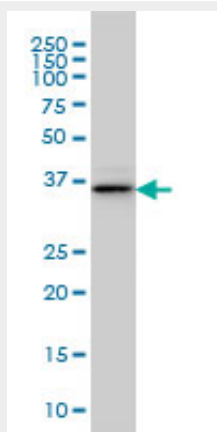
### BVES Antibody (monoclonal) (M02) - Images



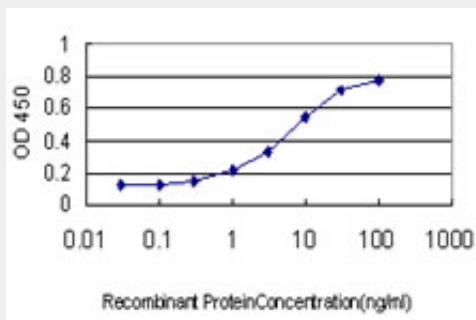
Antibody Reactive Against Recombinant Protein. Western Blot detection against Immunogen (36.63 kDa) .



BVES monoclonal antibody (M02), clone 3F7. Western Blot analysis of BVES expression in PC-12 (Cat # AT1322a )



BVES monoclonal antibody (M02), clone 3F7 Western Blot analysis of BVES expression in IMR-32 (Cat # AT1322a )



Detection limit for recombinant GST tagged BVES is approximately 0.1ng/ml as a capture antibody.

### **BVES Antibody (monoclonal) (M02) - Background**

This gene encodes a member of the POP family of proteins containing three putative transmembrane domains. This gene is expressed in cardiac and skeletal muscle and may play an important role in development of these tissues. The mouse ortholog may be involved in the regeneration of adult skeletal muscle and may act as a cell adhesion molecule in coronary vasculogenesis. Two transcript variants encoding the same protein have been found for this gene.

### **BVES Antibody (monoclonal) (M02) - References**

The role of height-associated loci identified in genome wide association studies in the determination of pediatric stature. Zhao J, et al. BMC Med Genet, 2010 Jun 14. PMID 20546612. Genome-wide association study identifies sequence variants on 6q21 associated with age at menarche. Sulem P, et al. Nat Genet, 2009 Jun. PMID 19448622. Many sequence variants affecting diversity of adult human height. Gudbjartsson DF, et al. Nat Genet, 2008 May. PMID 18391951. DNA methylation in tumor and matched normal tissues from non-small cell lung cancer patients. Feng Q, et al. Cancer Epidemiol Biomarkers Prev, 2008 Mar. PMID 18349282. Bves modulates epithelial integrity through an interaction at the tight junction. Osler ME, et al. J Cell Sci, 2005 Oct 15. PMID 16188940.