

C1D Antibody (monoclonal) (M03)

Mouse monoclonal antibody raised against a full length recombinant C1D.

Catalog # AT1333a

Specification

C1D Antibody (monoclonal) (M03) - Product Information

Application	IF, WB, IHC, E
Primary Accession	Q13901
Other Accession	BC005235
Reactivity	Human
Host	mouse
Clonality	Monoclonal
Isotype	IgG2a Kappa
Calculated MW	16019

C1D Antibody (monoclonal) (M03) - Additional Information

Gene ID 10438

Other Names

Nuclear nucleic acid-binding protein C1D, hC1D, C1D

Target/Specificity

C1D (AAH05235, 1 a.a. ~ 141 a.a) full-length recombinant protein with GST tag. MW of the GST tag alone is 26 KDa.

Dilution

WB~~1:500~1000

Format

Clear, colorless solution in phosphate buffered saline, pH 7.2 .

Storage

Store at -20°C or lower. Aliquot to avoid repeated freezing and thawing.

Precautions

C1D Antibody (monoclonal) (M03) is for research use only and not for use in diagnostic or therapeutic procedures.

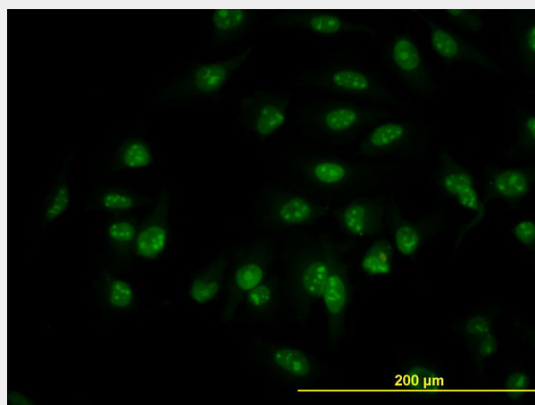
C1D Antibody (monoclonal) (M03) - Protocols

Provided below are standard protocols that you may find useful for product applications.

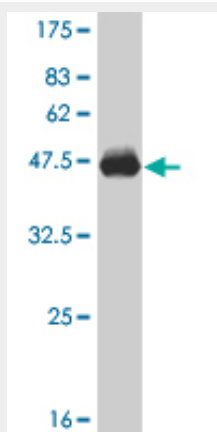
- [Western Blot](#)
- [Blocking Peptides](#)
- [Dot Blot](#)
- [Immunohistochemistry](#)

- [Immunofluorescence](#)
- [Immunoprecipitation](#)
- [Flow Cytometry](#)
- [Cell Culture](#)

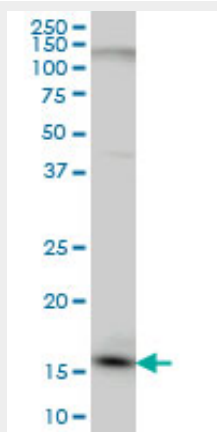
C1D Antibody (monoclonal) (M03) - Images



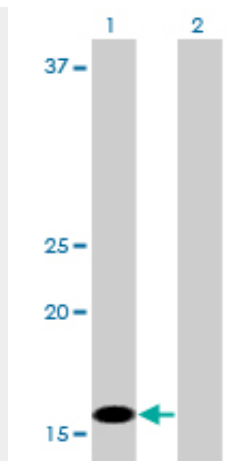
Immunofluorescence of monoclonal antibody to C1D on HeLa cell. [antibody concentration 10 ug/ml]



Antibody Reactive Against Recombinant Protein. Western Blot detection against Immunogen (41.25 KDa) .



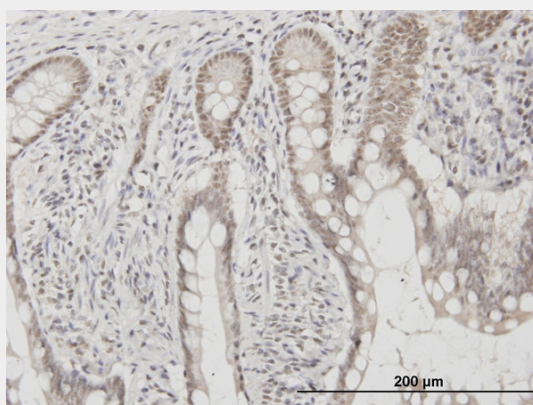
C1D monoclonal antibody (M03), clone 6H2 Western Blot analysis of C1D expression in HeLa (Cat # AT1333a)



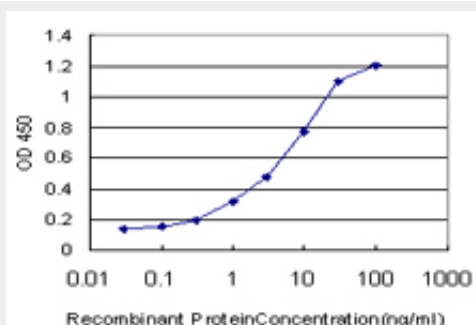
Western Blot analysis of C1D expression in transfected 293T cell line by C1D monoclonal antibody (M03), clone 6H2.

Lane 1: C1D transfected lysate(16 KDa).

Lane 2: Non-transfected lysate.



Immunoperoxidase of monoclonal antibody to C1D on formalin-fixed paraffin-embedded human colon. [antibody concentration 1 ug/ml]



Detection limit for recombinant GST tagged C1D is approximately 0.1ng/ml as a capture antibody.

C1D Antibody (monoclonal) (M03) - Background

The protein encoded by this gene is a DNA binding and apoptosis-inducing protein and is localized in the nucleus. It is also a Rac3-interacting protein which acts as a corepressor for the thyroid hormone receptor. This protein is thought to regulate TRAX/Translin complex formation. Alternate splicing results in multiple transcript variants that encode the same protein. Multiple pseudogenes

of this gene are found on chromosome 10.

C1D Antibody (monoclonal) (M03) - References

Polymorphisms in innate immunity genes and risk of childhood leukemia. Han S, et al. Hum Immunol, 2010 Jul. PMID 20438785. Risk of meningioma and common variation in genes related to innate immunity. Rajaraman P, et al. Cancer Epidemiol Biomarkers Prev, 2010 May. PMID 20406964. Common variation in genes related to innate immunity and risk of adult glioma. Rajaraman P, et al. Cancer Epidemiol Biomarkers Prev, 2009 May. PMID 19423540. C1D is a major autoantibody target in patients with the polymyositis-scleroderma overlap syndrome. Schilders G, et al. Arthritis Rheum, 2007 Jul. PMID 17599775. C1D and hMtr4p associate with the human exosome subunit PM/ScI-100 and are involved in pre-rRNA processing. Schilders G, et al. Nucleic Acids Res, 2007. PMID 17412707.