

**CCNH Antibody (monoclonal) (M01)****Mouse monoclonal antibody raised against a partial recombinant CCNH.****Catalog # AT1422a****Specification**

---

**CCNH Antibody (monoclonal) (M01) - Product Information**

|                   |                          |
|-------------------|--------------------------|
| Application       | IF, WB, IHC, E           |
| Primary Accession | <a href="#">P51946</a>   |
| Other Accession   | <a href="#">BC005280</a> |
| Reactivity        | Human                    |
| Host              | mouse                    |
| Clonality         | Monoclonal               |
| Isotype           | IgG2a kappa              |
| Calculated MW     | 37643                    |

**CCNH Antibody (monoclonal) (M01) - Additional Information****Gene ID** 902**Other Names**

Cyclin-H, MO15-associated protein, p34, p37, CCNH

**Target/Specificity**

CCNH (AAH05280, 1 a.a. ~ 110 a.a) partial recombinant protein with GST tag. MW of the GST tag alone is 26 KDa.

**Dilution**

WB~~1:500~1000

**Format**

Clear, colorless solution in phosphate buffered saline, pH 7.2 .

**Storage**

Store at -20°C or lower. Aliquot to avoid repeated freezing and thawing.

**Precautions**

CCNH Antibody (monoclonal) (M01) is for research use only and not for use in diagnostic or therapeutic procedures.

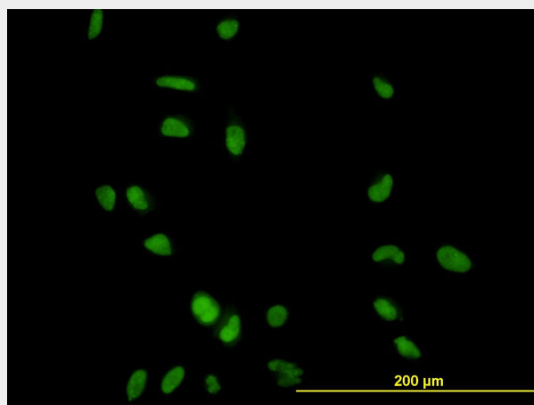
**CCNH Antibody (monoclonal) (M01) - Protocols**

Provided below are standard protocols that you may find useful for product applications.

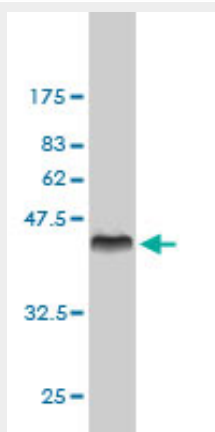
- [Western Blot](#)
- [Blocking Peptides](#)
- [Dot Blot](#)
- [Immunohistochemistry](#)

- [Immunofluorescence](#)
- [Immunoprecipitation](#)
- [Flow Cytometry](#)
- [Cell Culture](#)

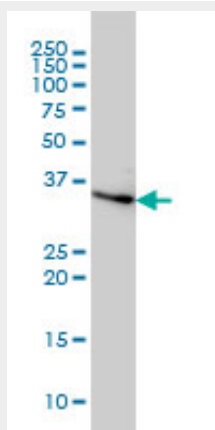
### CCNH Antibody (monoclonal) (M01) - Images



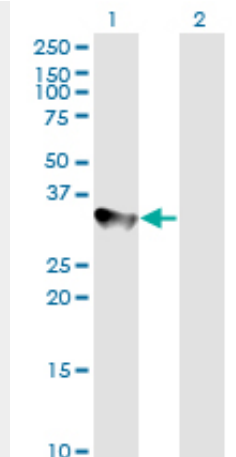
Immunofluorescence of monoclonal antibody to CCNH on HeLa cell. [antibody concentration 10 ug/ml]



Antibody Reactive Against Recombinant Protein. Western Blot detection against Immunogen (37.73 KDa) .



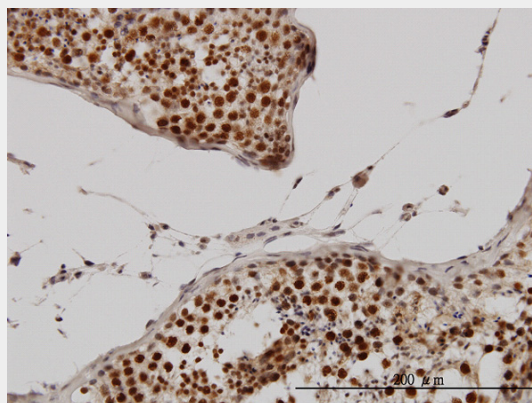
CCNH monoclonal antibody (M01), clone 1B8 Western Blot analysis of CCNH expression in HeLa (Cat # AT1422a )



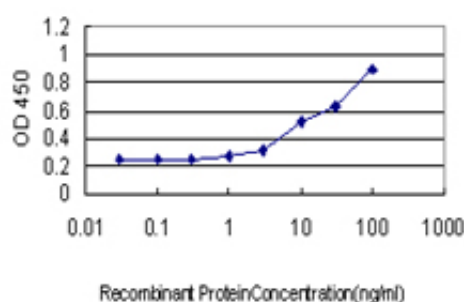
Western Blot analysis of CCNH expression in transfected 293T cell line by CCNH monoclonal antibody (M01), clone 1B8.

Lane 1: CCNH transfected lysate(37.6 KDa).

Lane 2: Non-transfected lysate.



Immunoperoxidase of monoclonal antibody to CCNH on formalin-fixed paraffin-embedded human testis. [antibody concentration 3 ug/ml]



Detection limit for recombinant GST tagged CCNH is approximately 1ng/ml as a capture antibody.

### CCNH Antibody (monoclonal) (M01) - Background

The protein encoded by this gene belongs to the highly conserved cyclin family, whose members are characterized by a dramatic periodicity in protein abundance through the cell cycle. Cyclins function as regulators of CDK kinases. Different cyclins exhibit distinct expression and degradation patterns which contribute to the temporal coordination of each mitotic event. This cyclin forms a complex with CDK7 kinase and ring finger protein MAT1. The kinase complex is able to

phosphorylate CDK2 and CDC2 kinases, thus functions as a CDK-activating kinase (CAK). This cyclin and its kinase partner are components of TFIIF, as well as RNA polymerase II protein complexes. They participate in two different transcriptional regulation processes, suggesting an important link between basal transcription control and the cell cycle machinery.

#### **CCNH Antibody (monoclonal) (M01) - References**

1. Mutations in UVSSA cause UV-sensitive syndrome and impair RNA polymerase II processing in transcription-coupled nucleotide-excision repair. Nakazawa Y, Sasaki K, Mitsutake N, Matsuse M, Shimada M, Nardo T, Takahashi Y, Ohyama K, Ito K, Mishima H, Nomura M, Kinoshita A, Ono S, Takenaka K, Masuyama R, Kudo T, Slor H, Utani A, Tateishi S, Yamashita S, Stefanini M, Lehmann AR, Yoshiura KI, Ogi T. Nat Genet. 2012 Apr 1. doi: 10.1038/ng.2229. [Epub ahead of print]