

CCRN4L Antibody (monoclonal) (M01)**Mouse monoclonal antibody raised against a partial recombinant CCRN4L.****Catalog # AT1426a****Specification**

CCRN4L Antibody (monoclonal) (M01) - Product Information

Application	WB, IHC, E
Primary Accession	O9UK39
Other Accession	NM_012118
Reactivity	Human
Host	Mouse
Clonality	Monoclonal
Isotype	IgG2a Kappa
Calculated MW	48196

CCRN4L Antibody (monoclonal) (M01) - Additional Information**Gene ID** 25819**Other Names**

Nocturnin, Carbon catabolite repression 4-like protein, Circadian deadenylase NOC, CCRN4L, CCR4, NOC

Target/Specificity

CCRN4L (NP_036250, 64 a.a. ~ 152 a.a) partial recombinant protein with GST tag. MW of the GST tag alone is 26 KDa.

Dilution

WB~~1:500~1000

Format

Clear, colorless solution in phosphate buffered saline, pH 7.2 .

Storage

Store at -20°C or lower. Aliquot to avoid repeated freezing and thawing.

Precautions

CCRN4L Antibody (monoclonal) (M01) is for research use only and not for use in diagnostic or therapeutic procedures.

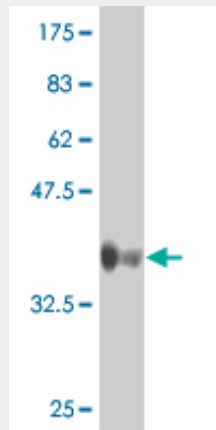
CCRN4L Antibody (monoclonal) (M01) - Protocols

Provided below are standard protocols that you may find useful for product applications.

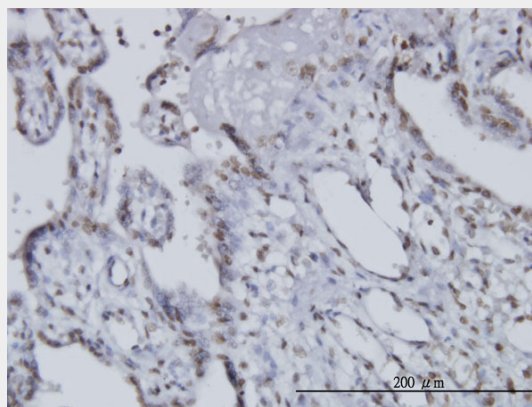
- [Western Blot](#)
- [Blocking Peptides](#)
- [Dot Blot](#)

- [Immunohistochemistry](#)
- [Immunofluorescence](#)
- [Immunoprecipitation](#)
- [Flow Cytometry](#)
- [Cell Culture](#)

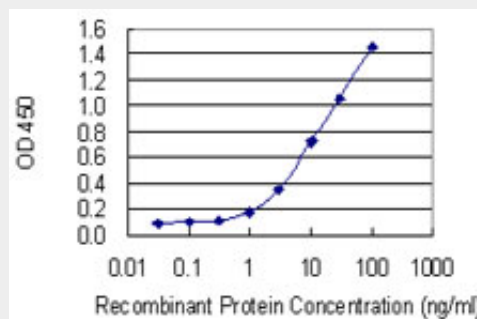
CCRN4L Antibody (monoclonal) (M01) - Images



Antibody Reactive Against Recombinant Protein. Western Blot detection against Immunogen (35.53 KDa) .



Immunoperoxidase of monoclonal antibody to CCRN4L on formalin-fixed paraffin-embedded human placenta. [antibody concentration 3 ug/ml]



Detection limit for recombinant GST tagged CCRN4L is 0.1 ng/ml as a capture antibody.

CCRN4L Antibody (monoclonal) (M01) - Background

The protein encoded by this gene is highly similar to Nocturnin, a gene identified as a circadian

clock regulated gene in *Xenopus laevis*. This protein and Nocturnin protein share similarity with the C-terminal domain of a yeast transcription factor, carbon catabolite repression 4 (CCR4). The mRNA abundance of a similar gene in mouse has been shown to exhibit circadian rhythmicity, which suggests a role for this protein in clock function or as a circadian clock effector.

CCRN4L Antibody (monoclonal) (M01) - References

Variation at the NFATC2 Locus Increases the Risk of Thiazolinedinedione-Induced Edema in the Diabetes REduction Assessment with ramipril and rosiglitazone Medication (DREAM) Study. Bailey SD, et al. Diabetes Care, 2010 Jul 13. PMID 20628086. Gene-centric association signals for lipids and apolipoproteins identified via the HumanCVD BeadChip. Talmud PJ, et al. Am J Hum Genet, 2009 Nov. PMID 19913121. CLOCK/BMAL1 regulates human nocturnin transcription through binding to the E-box of nocturnin promoter. Li R, et al. Mol Cell Biochem, 2008 Oct. PMID 18587630. RANKL-induced CCL22/macrophage-derived chemokine produced from osteoclasts potentially promotes the bone metastasis of lung cancer expressing its receptor CCR4. Nakamura ES, et al. Clin Exp Metastasis, 2006. PMID 16821125. Generation and initial analysis of more than 15,000 full-length human and mouse cDNA sequences. Strausberg RL, et al. Proc Natl Acad Sci U S A, 2002 Dec 24. PMID 12477932.