

**CKS2 Antibody (monoclonal) (M01)**

Mouse monoclonal antibody raised against a full length recombinant CKS2.

Catalog # AT1546a

**Specification**

---

**CKS2 Antibody (monoclonal) (M01) - Product Information**

Application	IF, WB, E
Primary Accession	<a href="#">P33552</a>
Other Accession	<a href="#">BC006458</a>
Reactivity	Human
Host	mouse
Clonality	Monoclonal
Isotype	IgG2b kappa
Calculated MW	9860

**CKS2 Antibody (monoclonal) (M01) - Additional Information**

**Gene ID** 1164

**Other Names**

Cyclin-dependent kinases regulatory subunit 2, CKS-2, CKS2

**Target/Specificity**

CKS2 (AAH06458, 1 a.a. ~ 79 a.a) full-length recombinant protein with GST tag. MW of the GST tag alone is 26 KDa.

**Dilution**

WB~~1:500~1000

**Format**

Clear, colorless solution in phosphate buffered saline, pH 7.2 .

**Storage**

Store at -20°C or lower. Aliquot to avoid repeated freezing and thawing.

**Precautions**

CKS2 Antibody (monoclonal) (M01) is for research use only and not for use in diagnostic or therapeutic procedures.

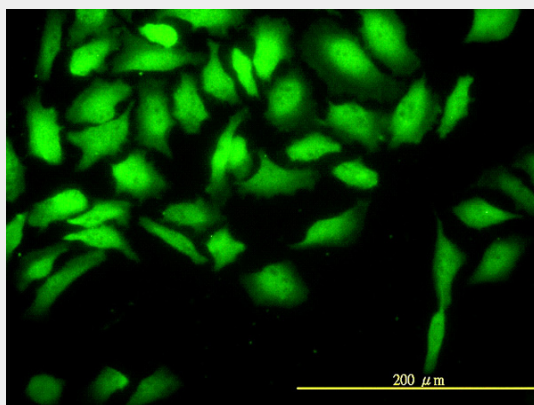
**CKS2 Antibody (monoclonal) (M01) - Protocols**

Provided below are standard protocols that you may find useful for product applications.

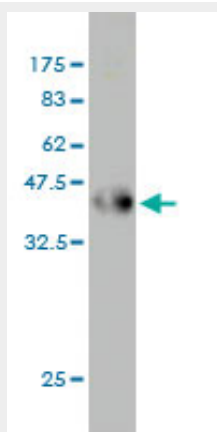
- [Western Blot](#)
- [Blocking Peptides](#)
- [Dot Blot](#)
- [Immunohistochemistry](#)

- [Immunofluorescence](#)
- [Immunoprecipitation](#)
- [Flow Cytometry](#)
- [Cell Culture](#)

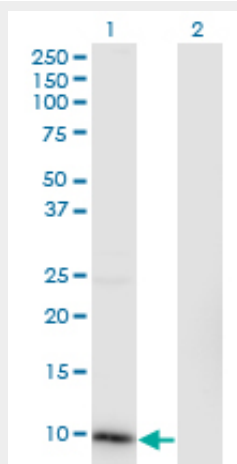
### CKS2 Antibody (monoclonal) (M01) - Images



Immunofluorescence of monoclonal antibody to CKS2 on HeLa cell. [antibody concentration 10 ug/ml]



Antibody Reactive Against Recombinant Protein. Western Blot detection against Immunogen (34.43 KDa) .

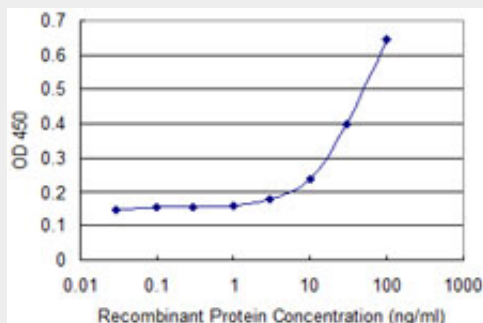


Western Blot analysis of CKS2 expression in transfected 293T cell line by CKS2 monoclonal

antibody (M01), clone 2H5-2C4.

Lane 1: CKS2 transfected lysate(9.9 KDa).

Lane 2: Non-transfected lysate.



Detection limit for recombinant GST tagged CKS2 is approximately 3ng/ml as a capture antibody.

### **CKS2 Antibody (monoclonal) (M01) - Background**

CKS2 protein binds to the catalytic subunit of the cyclin dependent kinases and is essential for their biological function. The CKS2 mRNA is found to be expressed in different patterns through the cell cycle in HeLa cells, which reflects specialized role for the encoded protein.

### **CKS2 Antibody (monoclonal) (M01) - References**

Clinical significance and expression of cyclin kinase subunits 1 and 2 in hepatocellular carcinoma. Shen DY, et al. Liver Int, 2010 Jan. PMID 19845855. Upregulation of the cyclin kinase subunit CKS2 increases cell proliferation rate in gastric cancer. Kang MA, et al. J Cancer Res Clin Oncol, 2009 Jun. PMID 19034516. Cyclin-dependent kinase-associated proteins Cks1 and Cks2 are essential during early embryogenesis and for cell cycle progression in somatic cells. Martinsson-Ahlzén HS, et al. Mol Cell Biol, 2008 Sep. PMID 18625720. Aberrant expression of Cks1 and Cks2 contributes to prostate tumorigenesis by promoting proliferation and inhibiting programmed cell death. Lan Y, et al. Int J Cancer, 2008 Aug 1. PMID 18498131. Exquisite sensitivity of TP53 mutant and basal breast cancers to a dose-dense epirubicin-cyclophosphamide regimen. Bertheau P, et al. PLoS Med, 2007 Mar. PMID 17388661.