

CLIC3 Antibody (monoclonal) (M02)**Mouse monoclonal antibody raised against a partial recombinant CLIC3.****Catalog # AT1557a****Specification**

CLIC3 Antibody (monoclonal) (M02) - Product Information

Application	IF, IP, WB, IHC, E
Primary Accession	O95833
Other Accession	NM_004669
Reactivity	Human
Host	mouse
Clonality	Monoclonal
Isotype	IgG2a Kappa
Calculated MW	26648

CLIC3 Antibody (monoclonal) (M02) - Additional Information**Gene ID** 9022**Other Names**

Chloride intracellular channel protein 3, CLIC3

Target/Specificity

CLIC3 (NP_004660, 137 a.a. ~ 236 a.a) partial recombinant protein with GST tag. MW of the GST tag alone is 26 KDa.

Dilution

WB~~1:500~1000

Format

Clear, colorless solution in phosphate buffered saline, pH 7.2 .

Storage

Store at -20°C or lower. Aliquot to avoid repeated freezing and thawing.

Precautions

CLIC3 Antibody (monoclonal) (M02) is for research use only and not for use in diagnostic or therapeutic procedures.

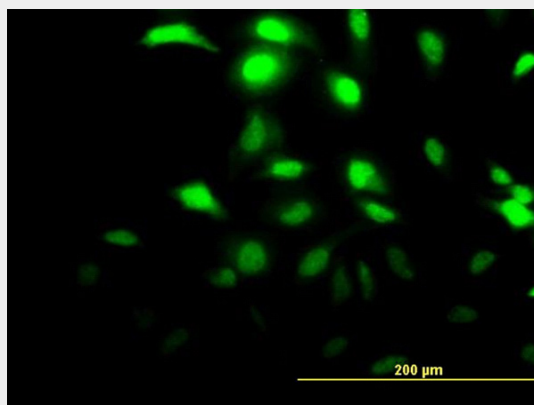
CLIC3 Antibody (monoclonal) (M02) - Protocols

Provided below are standard protocols that you may find useful for product applications.

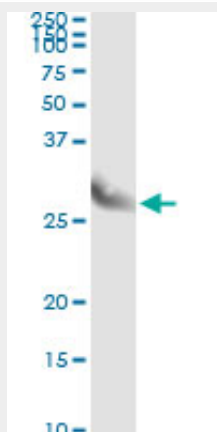
- [Western Blot](#)
- [Blocking Peptides](#)
- [Dot Blot](#)
- [Immunohistochemistry](#)

- [Immunofluorescence](#)
- [Immunoprecipitation](#)
- [Flow Cytometry](#)
- [Cell Culture](#)

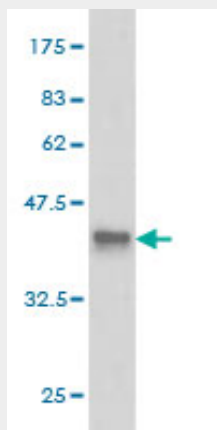
CLIC3 Antibody (monoclonal) (M02) - Images



Immunofluorescence of monoclonal antibody to CLIC3 on HeLa cell. [antibody concentration 15 ug/ml]

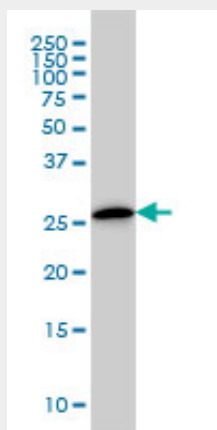


Immunoprecipitation of CLIC3 transfected lysate using anti-CLIC3 monoclonal antibody and Protein A Magnetic Bead ([U0007](#)), and immunoblotted with CLIC3 MaxPab rabbit polyclonal antibody.

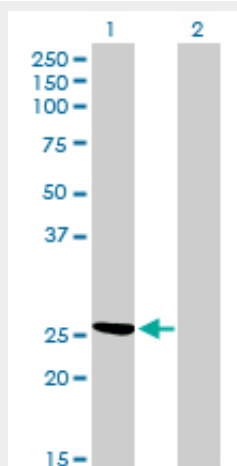


Antibody Reactive Against Recombinant Protein. Western Blot detection against Immunogen

(36.74 KDa) .

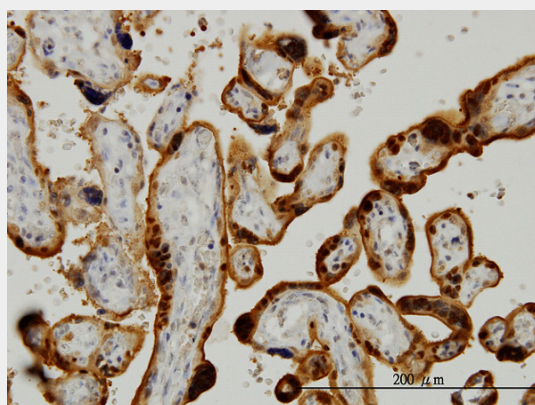


CLIC3 monoclonal antibody (M02), clone 3F8 Western Blot analysis of CLIC3 expression in A-431 (Cat # AT1557a)

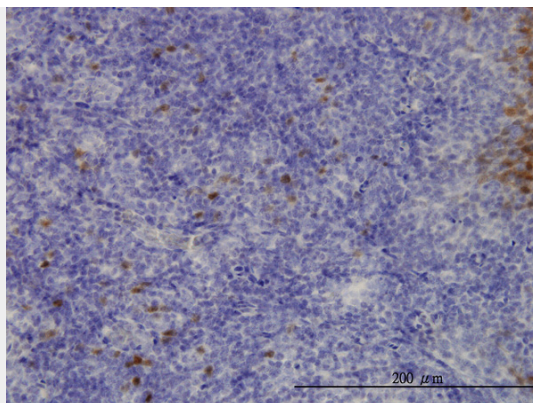


Western Blot analysis of CLIC3 expression in transfected 293T cell line by CLIC3 monoclonal antibody (M02), clone 3F8.

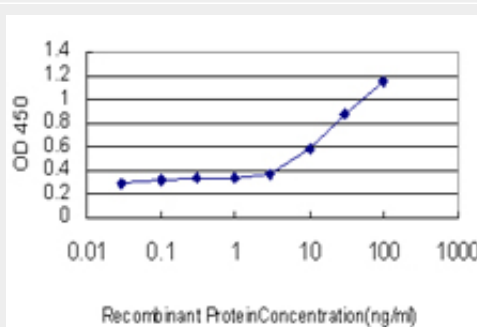
Lane 1: CLIC3 transfected lysate(26.6 KDa).
Lane 2: Non-transfected lysate.



Immunoperoxidase of monoclonal antibody to CLIC3 on formalin-fixed paraffin-embedded human placenta. [antibody concentration 3 ug/ml]



Immunoperoxidase of monoclonal antibody to CLIC3 on formalin-fixed paraffin-embedded human tonsil. [antibody concentration 3 ug/ml]



Detection limit for recombinant GST tagged CLIC3 is approximately 0.1ng/ml as a capture antibody.

CLIC3 Antibody (monoclonal) (M02) - Background

Chloride channels are a diverse group of proteins that regulate fundamental cellular processes including stabilization of cell membrane potential, transepithelial transport, maintenance of intracellular pH, and regulation of cell volume. Chloride intracellular channel 3 is a member of the p64 family and is predominantly localized in the nucleus and stimulates chloride ion channel activity. In addition, this protein may participate in cellular growth control, based on its association with ERK7, a member of the MAP kinase family.

CLIC3 Antibody (monoclonal) (M02) - References

Structure of human CLIC3 at 2 Å resolution. Littler DR, et al. *Proteins*, 2010 May 1. PMID 20146363. Toward a confocal subcellular atlas of the human proteome. Barbe L, et al. *Mol Cell Proteomics*, 2008 Mar. PMID 18029348. Expression and cellular localisation of chloride intracellular channel 3 in human placenta and fetal membranes. Money TT, et al. *Placenta*, 2007 May-Jun. PMID 17027078. The status, quality, and expansion of the NIH full-length cDNA project: the Mammalian Gene Collection (MGC). Gerhard DS, et al. *Genome Res*, 2004 Oct. PMID 15489334. Generation and initial analysis of more than 15,000 full-length human and mouse cDNA sequences. Strausberg RL, et al. *Proc Natl Acad Sci U S A*, 2002 Dec 24. PMID 12477932.