

**CPNE1 Antibody (monoclonal) (M01)****Mouse monoclonal antibody raised against a partial recombinant CPNE1.****Catalog # AT1606a****Specification**

---

**CPNE1 Antibody (monoclonal) (M01) - Product Information**

Application	WB, E
Primary Accession	<a href="#">Q99829</a>
Other Accession	<a href="#">NM_003915</a>
Reactivity	Human
Host	mouse
Clonality	Monoclonal
Isotype	IgG2a Kappa
Calculated MW	59059

**CPNE1 Antibody (monoclonal) (M01) - Additional Information****Gene ID** 8904**Other Names**

Copine-1, Copine I, CPNE1, CPN1

**Target/Specificity**

CPNE1 (NP\_003906, 111 a.a. ~ 210 a.a) partial recombinant protein with GST tag. MW of the GST tag alone is 26 KDa.

**Dilution**

WB~~1:500~1000

**Format**

Clear, colorless solution in phosphate buffered saline, pH 7.2 .

**Storage**

Store at -20°C or lower. Aliquot to avoid repeated freezing and thawing.

**Precautions**

CPNE1 Antibody (monoclonal) (M01) is for research use only and not for use in diagnostic or therapeutic procedures.

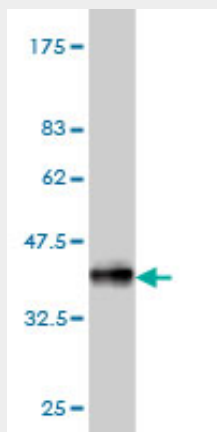
**CPNE1 Antibody (monoclonal) (M01) - Protocols**

Provided below are standard protocols that you may find useful for product applications.

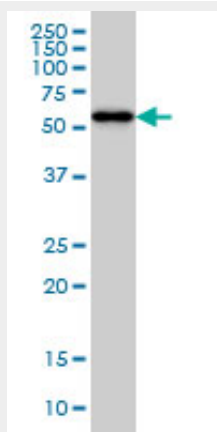
- [Western Blot](#)
- [Blocking Peptides](#)
- [Dot Blot](#)
- [Immunohistochemistry](#)

- [Immunofluorescence](#)
- [Immunoprecipitation](#)
- [Flow Cytometry](#)
- [Cell Culture](#)

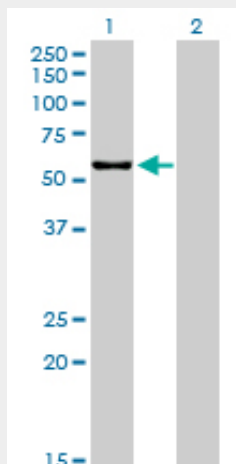
### CPNE1 Antibody (monoclonal) (M01) - Images



Antibody Reactive Against Recombinant Protein. Western Blot detection against Immunogen (36.74 KDa) .

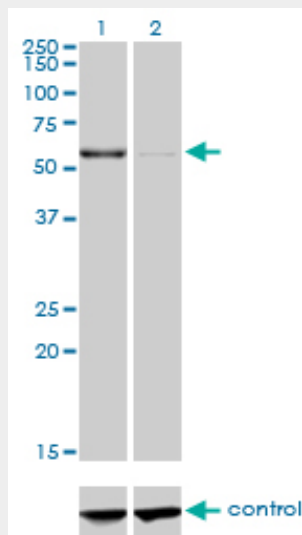


CPNE1 monoclonal antibody (M01), clone 8B8 Western Blot analysis of CPNE1 expression in HeLa (Cat # AT1606a)

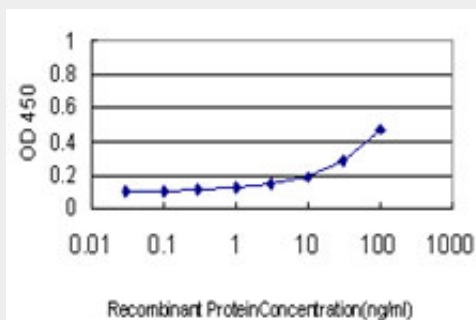


Western Blot analysis of CPNE1 expression in transfected 293T cell line by CPNE1 monoclonal antibody (M01), clone 8B8.

Lane 1: CPNE1 transfected lysate(59.1 KDa).  
Lane 2: Non-transfected lysate.



Western blot analysis of CPNE1 over-expressed 293 cell line, cotransfected with CPNE1 Validated Chimera RNAi (Cat # AT1606a)



Detection limit for recombinant GST tagged CPNE1 is approximately 1ng/ml as a capture antibody.

### CPNE1 Antibody (monoclonal) (M01) - Background

Calcium-dependent membrane-binding proteins may regulate molecular events at the interface of the cell membrane and cytoplasm. This gene encodes a calcium-dependent protein that also contains two N-terminal type II C2 domains and an integrin A domain-like sequence in the C-terminus. However, the encoded protein does not contain a predicted signal sequence or transmembrane domains. This protein has a broad tissue distribution and it may function in membrane trafficking. This gene and the gene for RNA binding motif protein 12 overlap at map location 20q11.21. Alternate splicing results in multiple transcript variants encoding different proteins.

### CPNE1 Antibody (monoclonal) (M01) - References

Defining the human deubiquitinating enzyme interaction landscape. Sowa ME, et al. Cell, 2009 Jul 23. PMID 19615732. Promoter-sharing by different genes in human genome--CPNE1 and RBM12 gene pair as an example. Yang W, et al. BMC Genomics, 2008 Oct 3. PMID 18831769. Upregulation

of Copine1 in trabecular meshwork cells of POAG patients: a membrane proteomics approach. Zhang Y, et al. Mol Vis, 2008 May 30. PMID 18523666. Systematic analysis of the protein interaction network for the human transcription machinery reveals the identity of the 7SK capping enzyme. Jeronimo C, et al. Mol Cell, 2007 Jul 20. PMID 17643375. Identifying leukocyte gene expression patterns associated with plasma lipid levels in human subjects. Ma J, et al. Atherosclerosis, 2007 Mar. PMID 16806233.