

CPS1 Antibody (monoclonal) (M02)**Mouse monoclonal antibody raised against a partial recombinant CPS1.****Catalog # AT1609a****Specification**

CPS1 Antibody (monoclonal) (M02) - Product Information

Application	WB
Primary Accession	P31327
Other Accession	NM_001875
Reactivity	Human
Host	mouse
Clonality	Monoclonal
Isotype	IgG1 Lambda
Calculated MW	164939

CPS1 Antibody (monoclonal) (M02) - Additional Information**Gene ID** 1373**Other Names**

Carbamoyl-phosphate synthase [ammonia], mitochondrial, Carbamoyl-phosphate synthetase I, CPSase I, CPS1

Target/Specificity

CPS1 (NP_001866, 1400 a.a. ~ 1500 a.a) partial recombinant protein with GST tag. MW of the GST tag alone is 26 KDa.

Dilution

WB~~1:500~1000

Format

Clear, colorless solution in phosphate buffered saline, pH 7.2 .

Storage

Store at -20°C or lower. Aliquot to avoid repeated freezing and thawing.

Precautions

CPS1 Antibody (monoclonal) (M02) is for research use only and not for use in diagnostic or therapeutic procedures.

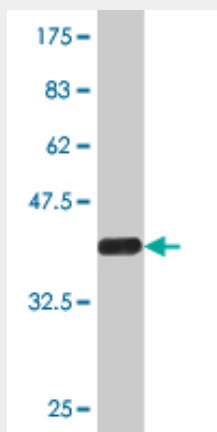
CPS1 Antibody (monoclonal) (M02) - Protocols

Provided below are standard protocols that you may find useful for product applications.

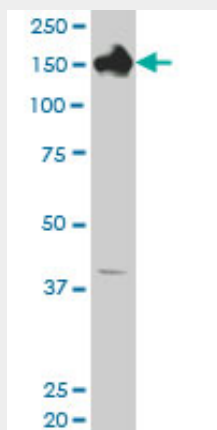
- [Western Blot](#)
- [Blocking Peptides](#)
- [Dot Blot](#)

- [Immunohistochemistry](#)
- [Immunofluorescence](#)
- [Immunoprecipitation](#)
- [Flow Cytometry](#)
- [Cell Culture](#)

CPS1 Antibody (monoclonal) (M02) - Images



Antibody Reactive Against Recombinant Protein. Western Blot detection against Immunogen (36.85 kDa) .



CPS1 monoclonal antibody (M02), clone 4A10. Western Blot analysis of CPS1 expression in HeLa (Cat # AT1609a)

CPS1 Antibody (monoclonal) (M02) - Background

The mitochondrial enzyme encoded by this gene catalyzes synthesis of carbamoyl phosphate from ammonia and bicarbonate. This reaction is the first committed step of the urea cycle, which is important in the removal of excess urea from cells. The encoded protein may also represent a core mitochondrial nucleoid protein. Three transcript variants encoding different isoforms have been found for this gene. The shortest isoform may not be localized to the mitochondrion. Mutations in this gene have been associated with carbamoyl phosphate synthetase deficiency, susceptibility to persistent pulmonary hypertension, and susceptibility to venoocclusive disease after bone marrow transplantation.

CPS1 Antibody (monoclonal) (M02) - References

Common variants conferring risk of schizophrenia: a pathway analysis of GWAS data. Jia P, et al.

Schizophr Res, 2010 Sep. PMID 20659789. Variation at the NFATC2 Locus Increases the Risk of Thiazolinedione-Induced Edema in the Diabetes REduction Assessment with ramipril and rosiglitazone Medication (DREAM) Study. Bailey SD, et al. Diabetes Care, 2010 Jul 13. PMID 20628086. The T1405N carbamoyl phosphate synthetase polymorphism does not affect plasma arginine concentrations in preterm infants. Moonen RM, et al. PLoS One, 2010 May 25. PMID 20520828. Effect of CPS1 4217C > A genotype on valproic acid-induced hyperammonemia. Yagi M, et al. Pediatr Int, 2010 Apr 22. PMID 20456087. New loci associated with kidney function and chronic kidney disease. Kottgen A, et al. Nat Genet, 2010 May. PMID 20383146.