

**CPSF6 Antibody (monoclonal) (M07)****Mouse monoclonal antibody raised against a partial recombinant CPSF6.****Catalog # AT1612a****Specification**

---

**CPSF6 Antibody (monoclonal) (M07) - Product Information**

Application	IF, WB, E
Primary Accession	<a href="#">Q16630</a>
Other Accession	<a href="#">NM_007007</a>
Reactivity	Human, Mouse
Host	mouse
Clonality	Monoclonal
Isotype	IgG2b Kappa
Calculated MW	59210

**CPSF6 Antibody (monoclonal) (M07) - Additional Information****Gene ID** 11052**Other Names**

Cleavage and polyadenylation specificity factor subunit 6, Cleavage and polyadenylation specificity factor 68 kDa subunit, CFIm68, CPSF 68 kDa subunit, Pre-mRNA cleavage factor Im 68 kDa subunit, Protein HPBR11-4/7, CPSF6, CFIM68

**Target/Specificity**

CPSF6 (NP\_008938, 37 a.a. ~ 136 a.a) partial recombinant protein with GST tag. MW of the GST tag alone is 26 KDa.

**Dilution**

WB~~1:500~1000

**Format**

Clear, colorless solution in phosphate buffered saline, pH 7.2 .

**Storage**

Store at -20°C or lower. Aliquot to avoid repeated freezing and thawing.

**Precautions**

CPSF6 Antibody (monoclonal) (M07) is for research use only and not for use in diagnostic or therapeutic procedures.

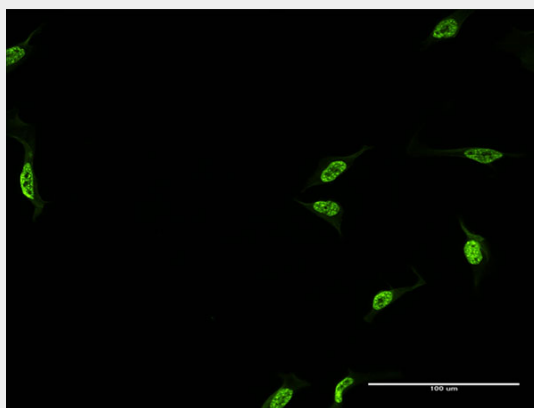
**CPSF6 Antibody (monoclonal) (M07) - Protocols**

Provided below are standard protocols that you may find useful for product applications.

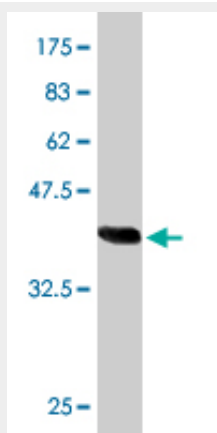
- [Western Blot](#)
- [Blocking Peptides](#)

- [Dot Blot](#)
- [Immunohistochemistry](#)
- [Immunofluorescence](#)
- [Immunoprecipitation](#)
- [Flow Cytometry](#)
- [Cell Culture](#)

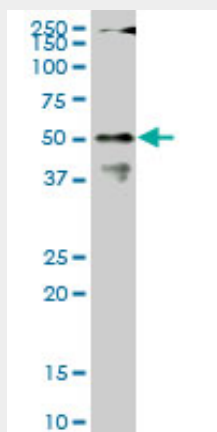
### CPSF6 Antibody (monoclonal) (M07) - Images



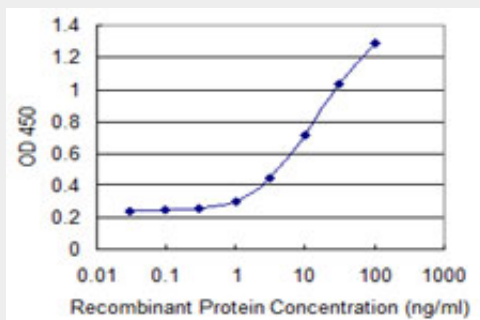
Immunofluorescence of monoclonal antibody to CPSF6 on HeLa cell . [antibody concentration 10 ug/ml]



Antibody Reactive Against Recombinant Protein. Western Blot detection against Immunogen (36.74 KDa) .



CPSF6 monoclonal antibody (M07), clone 1C5. Western Blot analysis of CPSF6 expression in NIH/3T3 (Cat # AT1612a)



Detection limit for recombinant GST tagged CPSF6 is 0.3 ng/ml as a capture antibody.

### **CPSF6 Antibody (monoclonal) (M07) - Background**

The protein encoded by this gene is one subunit of a cleavage factor required for 3' RNA cleavage and polyadenylation processing. The interaction of the protein with the RNA is one of the earliest steps in the assembly of the 3' end processing complex and facilitates the recruitment of other processing factors. The cleavage factor complex is composed of four polypeptides. This gene encodes the 68kD subunit. It has a domain organization reminiscent of spliceosomal proteins.

### **CPSF6 Antibody (monoclonal) (M07) - References**

Flexible use of nuclear import pathways by HIV-1. Lee K, et al. Cell Host Microbe, 2010 Mar 18. PMID 20227665. Mammalian pre-mRNA 3' end processing factor CF Im 68 functions in mRNA export. Ruepp MD, et al. Mol Biol Cell, 2009 Dec. PMID 19864460. Shifted Transversal Design smart-pooling for high coverage interactome mapping. Xin X, et al. Genome Res, 2009 Jul. PMID 19447967. Nucleophosmin serves as a rate-limiting nuclear export chaperone for the Mammalian ribosome. Maggi LB Jr, et al. Mol Cell Biol, 2008 Dec. PMID 18809582. Many sequence variants affecting diversity of adult human height. Gudbjartsson DF, et al. Nat Genet, 2008 May. PMID 18391951.