

**CSNK2A1 Antibody (monoclonal) (M01)**

Mouse monoclonal antibody raised against a partial recombinant CSNK2A1.

Catalog # AT1656a

**Specification**

---

**CSNK2A1 Antibody (monoclonal) (M01) - Product Information**

Application	IF, WB, E
Primary Accession	<a href="#">P68400</a>
Other Accession	<a href="#">BC011668</a>
Reactivity	Human
Host	mouse
Clonality	Monoclonal
Isotype	IgG2a Kappa
Calculated MW	45144

**CSNK2A1 Antibody (monoclonal) (M01) - Additional Information**

**Gene ID** 1457

**Other Names**

Casein kinase II subunit alpha, CK II alpha, CSNK2A1, CK2A1

**Target/Specificity**

CSNK2A1 (AAH11668, 1 a.a. ~ 100 a.a) partial recombinant protein with GST tag. MW of the GST tag alone is 26 KDa.

**Dilution**

WB~~1:500~1000

**Format**

Clear, colorless solution in phosphate buffered saline, pH 7.2 .

**Storage**

Store at -20°C or lower. Aliquot to avoid repeated freezing and thawing.

**Precautions**

CSNK2A1 Antibody (monoclonal) (M01) is for research use only and not for use in diagnostic or therapeutic procedures.

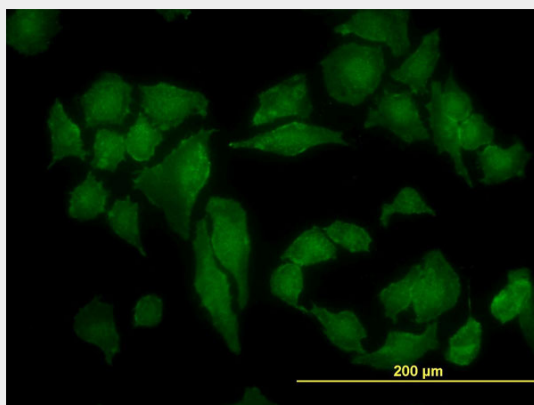
**CSNK2A1 Antibody (monoclonal) (M01) - Protocols**

Provided below are standard protocols that you may find useful for product applications.

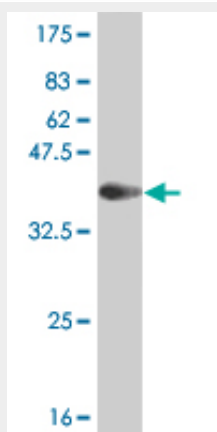
- [Western Blot](#)
- [Blocking Peptides](#)
- [Dot Blot](#)
- [Immunohistochemistry](#)

- [Immunofluorescence](#)
- [Immunoprecipitation](#)
- [Flow Cytometry](#)
- [Cell Culture](#)

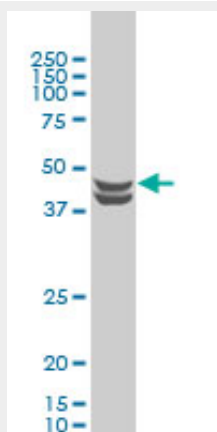
### CSNK2A1 Antibody (monoclonal) (M01) - Images



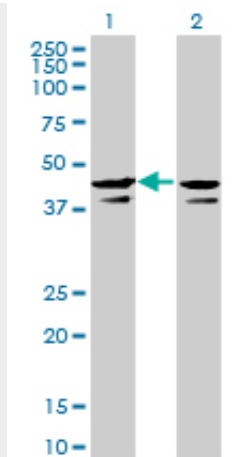
Immunofluorescence of monoclonal antibody to CSNK2A1 on HeLa cell. [antibody concentration 10 ug/ml]



Antibody Reactive Against Recombinant Protein. Western Blot detection against Immunogen (36.63 KDa) .



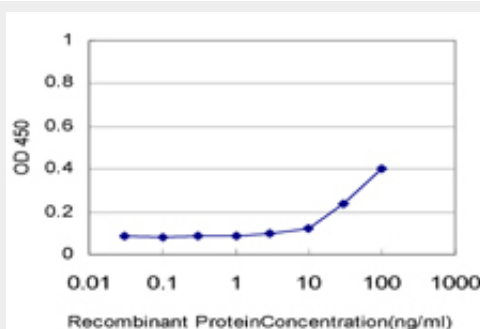
CSNK2A1 monoclonal antibody (M01), clone 3D9 Western Blot analysis of CSNK2A1 expression in HeLa S3 NE ( (Cat # AT1656a )



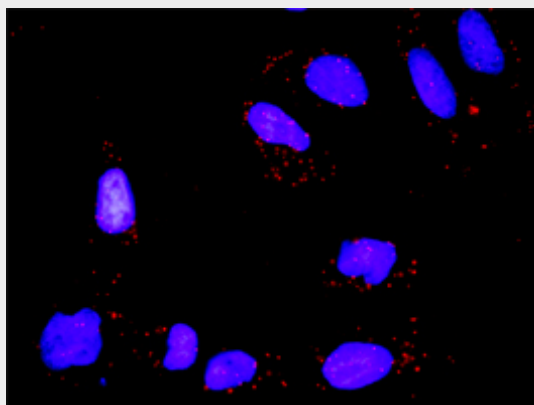
Western Blot analysis of CSNK2A1 expression in transfected 293T cell line by CSNK2A1 monoclonal antibody (M01), clone 3D9.

Lane 1: CSNK2A1 transfected lysate(45.1 KDa).

Lane 2: Non-transfected lysate.



Detection limit for recombinant GST tagged CSNK2A1 is approximately 3ng/ml as a capture antibody.



Proximity Ligation Analysis of protein-protein interactions between TP53 and CSNK2A1 HeLa cells were stained with anti-TP53 rabbit purified polyclonal 1:1200 and anti-CSNK2A1 mouse monoclonal antibody 1:50. Each red dot represents the detection of protein-protein interaction complex, and nuclei were counterstained with DAPI (blue).

#### **CSNK2A1 Antibody (monoclonal) (M01) - Background**

Casein kinase II is a serine/threonine protein kinase that phosphorylates acidic proteins such as casein. The kinase exists as a tetramer and is composed of an alpha, an alpha-prime, and two beta

subunits. The alpha subunits contain the catalytic activity while the beta subunits undergo autophosphorylation. The protein encoded by this gene represents the alpha subunit. While this gene is found on chromosome 20, a related transcribed pseudogene is found on chromosome 11. Three transcript variants encoding two different proteins have been found for this gene.

#### **CSNK2A1 Antibody (monoclonal) (M01) - References**

1. CK2 Inhibitors Enhance the Radiosensitivity of Human Non-Small Cell Lung Cancer Cells Through Inhibition of Stat3 Activation. Lin YC, Hung MS, Lin CK, Li JM, Lee KD, Li YC, Chen MF, Chen JK, Yang CT. Cancer Biother Radiopharm. 2011 Jun;26(3):381-8. Epub 2011 Jun 28.