

**DLD Antibody (monoclonal) (M05)**

Mouse monoclonal antibody raised against a full length recombinant DLD.

Catalog # AT1771a

**Specification**

---

**DLD Antibody (monoclonal) (M05) - Product Information**

Application	WB, IHC, E
Primary Accession	<a href="#">P09622</a>
Other Accession	<a href="#">BC018696</a>
Reactivity	Human
Host	mouse
Clonality	Monoclonal
Isotype	IgG3 Kappa
Calculated MW	54177

**DLD Antibody (monoclonal) (M05) - Additional Information**

**Gene ID** 1738

**Other Names**

Dihydrolipoyl dehydrogenase, mitochondrial, Dihydrolipoamide dehydrogenase, Glycine cleavage system L protein, DLD, GCSL, LAD, PHE3

**Target/Specificity**

DLD (AAH18696, 1 a.a. ~ 509 a.a) full-length recombinant protein with GST tag. MW of the GST tag alone is 26 KDa.

**Dilution**

WB~~1:500~1000

**Format**

Clear, colorless solution in phosphate buffered saline, pH 7.2 .

**Storage**

Store at -20°C or lower. Aliquot to avoid repeated freezing and thawing.

**Precautions**

DLD Antibody (monoclonal) (M05) is for research use only and not for use in diagnostic or therapeutic procedures.

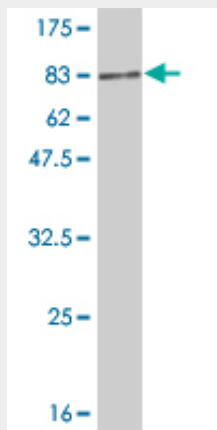
**DLD Antibody (monoclonal) (M05) - Protocols**

Provided below are standard protocols that you may find useful for product applications.

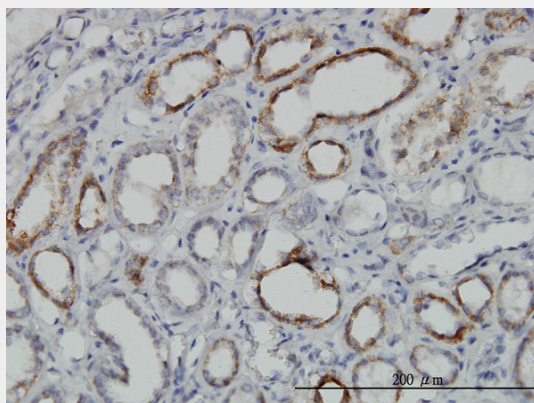
- [Western Blot](#)
- [Blocking Peptides](#)
- [Dot Blot](#)

- [Immunohistochemistry](#)
- [Immunofluorescence](#)
- [Immunoprecipitation](#)
- [Flow Cytometry](#)
- [Cell Culture](#)

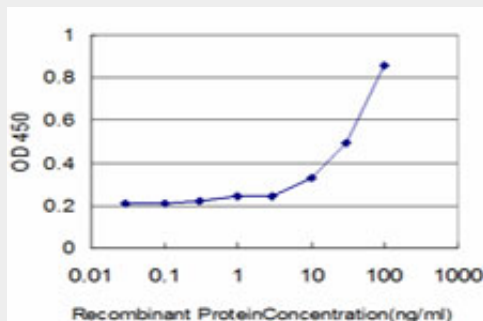
#### DLD Antibody (monoclonal) (M05) - Images



Antibody Reactive Against Recombinant Protein. Western Blot detection against Immunogen (81.73 KDa) .



Immunoperoxidase of monoclonal antibody to DLD on formalin-fixed paraffin-embedded human kidney. [antibody concentration 3 ug/ml]



Detection limit for recombinant GST tagged DLD is approximately 1ng/ml as a capture antibody.

#### DLD Antibody (monoclonal) (M05) - Background

This gene encodes the L protein of the mitochondrial glycine cleavage system. The L protein, also

named dihydrolipoamide dehydrogenase, is also a component of the pyruvate dehydrogenase complex, the alpha-ketoglutarate dehydrogenase complex, and the branched-chain alpha-keto acide dehydrogenase complex. Mutations in this gene have been identified in patients with E3-deficient maple syrup urine disease and lipoamide dehydrogenase deficiency.

#### **DLD Antibody (monoclonal) (M05) - References**

A genome-wide association study identifies three new susceptibility loci for ulcerative colitis in the Japanese population. Asano K, et al. Nat Genet, 2009 Dec. PMID 19915573. Genome-wide association study of ulcerative colitis identifies three new susceptibility loci, including the HNF4A region. UK IBD Genetics Consortium, et al. Nat Genet, 2009 Dec. PMID 19915572. Proteome analysis of schizophrenia patients Wernicke's area reveals an energy metabolism dysregulation. Martins-de-Souza D, et al. BMC Psychiatry, 2009 Apr 30. PMID 19405953. Ulcerative colitis-risk loci on chromosomes 1p36 and 12q15 found by genome-wide association study. Silverberg MS, et al. Nat Genet, 2009 Feb. PMID 19122664. The role of amino acids T148 and R281 in human dihydrolipoamide dehydrogenase. Wang YC, et al. J Biomed Sci, 2008 Jan. PMID 17960497.