

DLX2 monoclonal antibody (M02), clone 4B9
Purified Mouse Monoclonal Antibody (Mab)
Catalog # AT1776a

Specification

DLX2 monoclonal antibody (M02), clone 4B9 - Product Information

Application	WB, IHC, E
Primary Accession	Q07687
Other Accession	NM_004405
Reactivity	Human, Mouse
Host	Mouse
Clonality	Monoclonal
Isotype	IgG2a Kappa
Calculated MW	34243

DLX2 monoclonal antibody (M02), clone 4B9 - Additional Information

Gene ID 1746

Other Names

Homeobox protein DLX-2, DLX2

Target/Specificity

DLX2 (NP_004396.1, 1 a.a. ~ 110 a.a) partial recombinant protein with GST tag. MW of the GST tag alone is 26 KDa.

Format

Clear, colorless solution in phosphate buffered saline, pH 7.2 .

Storage

Store at -20°C or lower. Aliquot to avoid repeated freezing and thawing.

Precautions

DLX2 monoclonal antibody (M02), clone 4B9 is for research use only and not for use in diagnostic or therapeutic procedures.

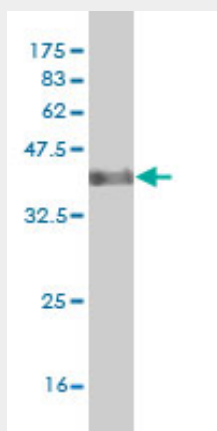
DLX2 monoclonal antibody (M02), clone 4B9 - Protocols

Provided below are standard protocols that you may find useful for product applications.

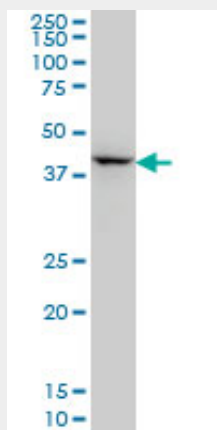
- [Western Blot](#)
- [Blocking Peptides](#)
- [Dot Blot](#)
- [Immunohistochemistry](#)
- [Immunofluorescence](#)
- [Immunoprecipitation](#)
- [Flow Cytometry](#)

- [Cell Culture](#)

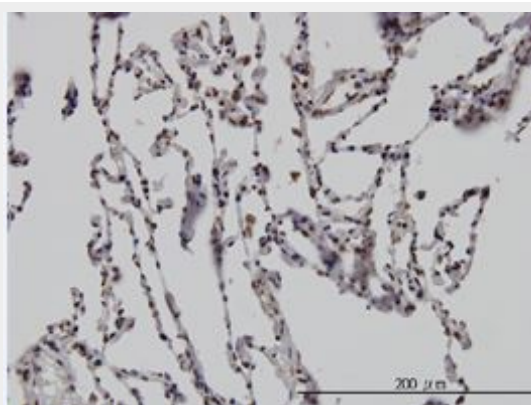
DLX2 monoclonal antibody (M02), clone 4B9 - Images



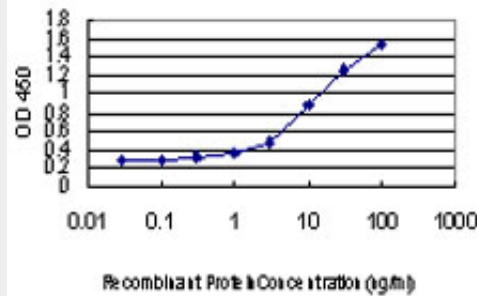
Western Blot detection against Immunogen (38.21 KDa) .



DLX2 monoclonal antibody (M02), clone 4B9 Western Blot analysis of DLX2 expression in NIH/3T3.



Immunoperoxidase of monoclonal antibody to DLX2 on formalin-fixed paraffin-embedded human lung. [antibody concentration 1 ug/ml]



Detection limit for recombinant GST tagged DLX2 is approximately 0.3ng/ml as a capture antibody.

DLX2 monoclonal antibody (M02), clone 4B9 - Background

Many vertebrate homeo box-containing genes have been identified on the basis of their sequence similarity with Drosophila developmental genes. Members of the Dlx gene family contain a homeobox that is related to that of Distal-less (Dll), a gene expressed in the head and limbs of the developing fruit fly. The Distal-less (Dlx) family of genes comprises at least 6 different members, DLX1-DLX6. The DLX proteins are postulated to play a role in forebrain and craniofacial development. This gene is located in a tail-to-tail configuration with another member of the gene family on the long arm of chromosome 2.

DLX2 monoclonal antibody (M02), clone 4B9 - References

Maternal genes and facial clefts in offspring: a comprehensive search for genetic associations in two population-based cleft studies from Scandinavia. Jugessur A, et al. PLoS One, 2010 Jul 9. PMID 20634891. High-density association study of 383 candidate genes for volumetric BMD at the femoral neck and lumbar spine among older men. Yerges LM, et al. J Bone Miner Res, 2009 Dec. PMID 19453261. Polymorphisms of coding trinucleotide repeats of homeogenes in neurodevelopmental psychiatric disorders. Laroche F, et al. Psychiatr Genet, 2008 Dec. PMID 19018235. The DLX1 and DLX2 genes and susceptibility to autism spectrum disorders. Liu X, et al. Eur J Hum Genet, 2009 Feb. PMID 18728693. Protein kinase C phosphorylation modulates N- and C-terminal regulatory activities of the PITX2 homeodomain protein. Espinoza HM, et al. Biochemistry, 2005 Mar 15. PMID 15751970.