

**EXOC3 Antibody (monoclonal) (M01)****Mouse monoclonal antibody raised against a partial recombinant EXOC3.****Catalog # AT1963a****Specification**

---

**EXOC3 Antibody (monoclonal) (M01) - Product Information**

|                   |                           |
|-------------------|---------------------------|
| Application       | WB, E                     |
| Primary Accession | <a href="#">O60645</a>    |
| Other Accession   | <a href="#">NM_007277</a> |
| Reactivity        | Human                     |
| Host              | mouse                     |
| Clonality         | Monoclonal                |
| Isotype           | IgG2b Kappa               |
| Calculated MW     | 85567                     |

**EXOC3 Antibody (monoclonal) (M01) - Additional Information****Gene ID** 11336**Other Names**

Exocyst complex component 3, Exocyst complex component Sec6, EXOC3, SEC6, SEC6L1

**Target/Specificity**

EXOC3 (NP\_009208, 646 a.a. ~ 745 a.a) partial recombinant protein with GST tag. MW of the GST tag alone is 26 KDa.

**Dilution**

WB~~1:500~1000

**Format**

Clear, colorless solution in phosphate buffered saline, pH 7.2 .

**Storage**

Store at -20°C or lower. Aliquot to avoid repeated freezing and thawing.

**Precautions**

EXOC3 Antibody (monoclonal) (M01) is for research use only and not for use in diagnostic or therapeutic procedures.

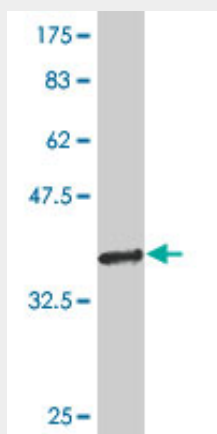
**EXOC3 Antibody (monoclonal) (M01) - Protocols**

Provided below are standard protocols that you may find useful for product applications.

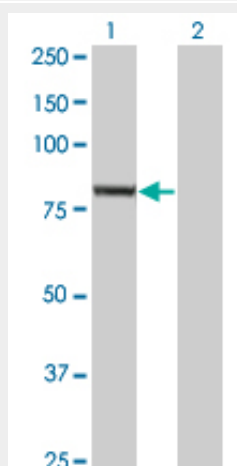
- [Western Blot](#)
- [Blocking Peptides](#)
- [Dot Blot](#)
- [Immunohistochemistry](#)

- [Immunofluorescence](#)
- [Immunoprecipitation](#)
- [Flow Cytometry](#)
- [Cell Culture](#)

### EXOC3 Antibody (monoclonal) (M01) - Images



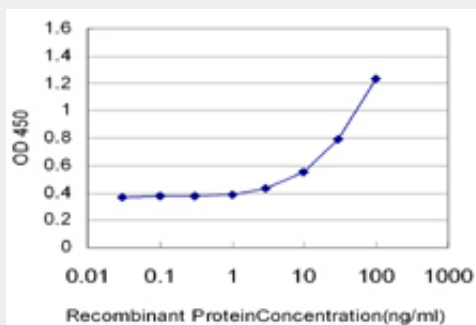
Antibody Reactive Against Recombinant Protein. Western Blot detection against Immunogen (36.74 KDa) .



Western Blot analysis of EXOC3 expression in transfected 293T cell line by EXOC3 monoclonal antibody (M01), clone 4A7.

Lane 1: EXOC3 transfected lysate (86.845 KDa).

Lane 2: Non-transfected lysate.



Detection limit for recombinant GST tagged EXOC3 is approximately 3ng/ml as a capture antibody.

#### **EXOC3 Antibody (monoclonal) (M01) - Background**

The protein encoded by this gene is a component of the exocyst complex, a multiple protein complex essential for targeting exocytic vesicles to specific docking sites on the plasma membrane. Though best characterized in yeast, the component proteins and functions of exocyst complex have been demonstrated to be highly conserved in higher eukaryotes. At least eight components of the exocyst complex, including this protein, are found to interact with the actin cytoskeletal remodeling and vesicle transport machinery. The complex is also essential for the biogenesis of epithelial cell surface polarity.

#### **EXOC3 Antibody (monoclonal) (M01) - References**

1. West Nile virus and Dengue virus capsid protein negates the antiviral activity of human Sec3 protein Through The Proteasome Pathway. Raghavan B, Ng M. *Cell Microbiol.* 2013 Mar 22. doi: 10.1111/cmi.12143. 2. Exocyst subunits are involved in isoproterenol-induced amylase release from rat parotid acinar cells. Imai A, Yoshie S, Haga-Tsujimura M, Nashida T, Shimomura H. *Eur J Oral Sci.* 2012 Apr;120(2):123-31. doi: 10.1111/j.1600-0722.2012.00952.x.