

**F11 monoclonal antibody (M01), clone 2H8**  
**Purified Mouse Monoclonal Antibody (Mab)**  
**Catalog # AT1973a****Specification**

---

**F11 monoclonal antibody (M01), clone 2H8 - Product Information**

Application	WB, E
Primary Accession	<a href="#">P03951</a>
Other Accession	<a href="#">NP_000119</a>
Reactivity	Human
Host	Mouse
Clonality	Monoclonal
Isotype	IgG1 Kappa
Calculated MW	70109

**F11 monoclonal antibody (M01), clone 2H8 - Additional Information****Gene ID** 2160**Other Names**

Coagulation factor XI, FXI, Plasma thromboplastin antecedent, PTA, Coagulation factor XIa heavy chain, Coagulation factor XIa light chain, F11

**Target/Specificity**

F11 (NP\_000119, 286 a.a. ~ 385 a.a) partial recombinant protein with GST tag. MW of the GST tag alone is 26 KDa.

**Format**

Clear, colorless solution in phosphate buffered saline, pH 7.2 .

**Storage**

Store at -20°C or lower. Aliquot to avoid repeated freezing and thawing.

**Precautions**

F11 monoclonal antibody (M01), clone 2H8 is for research use only and not for use in diagnostic or therapeutic procedures.

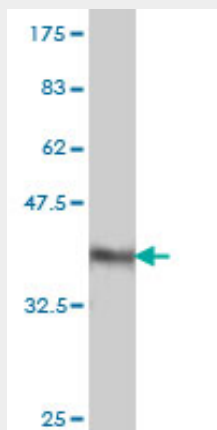
**F11 monoclonal antibody (M01), clone 2H8 - Protocols**

Provided below are standard protocols that you may find useful for product applications.

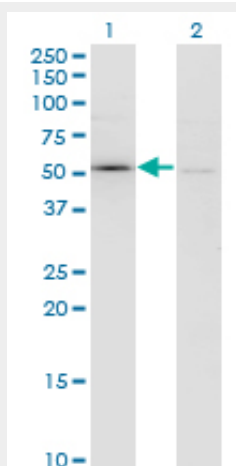
- [Western Blot](#)
- [Blocking Peptides](#)
- [Dot Blot](#)
- [Immunohistochemistry](#)
- [Immunofluorescence](#)
- [Immunoprecipitation](#)

- [Flow Cytometry](#)
- [Cell Culture](#)

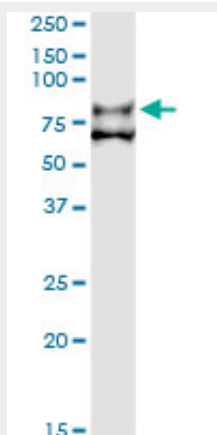
### F11 monoclonal antibody (M01), clone 2H8 - Images



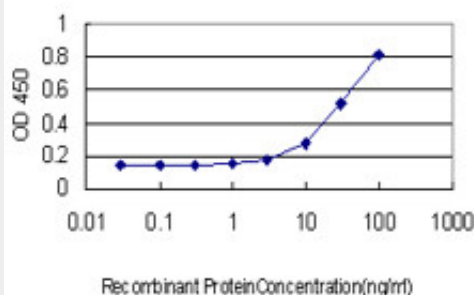
Western Blot detection against Immunogen (36.74 KDa) .



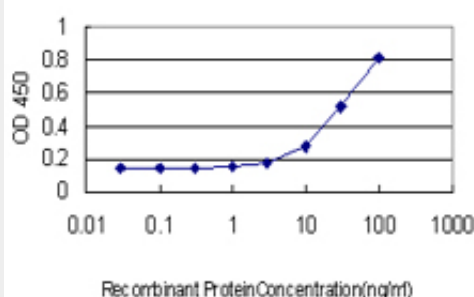
Western Blot analysis of F11 expression in transfected 293T cell line by F11 monoclonal antibody (M01), clone 2H8. Lane 1: F11 transfected lysate(70.1 KDa). Lane 2: Non-transfected lysate.



Immunoprecipitation of F11 transfected lysate using anti-F11 monoclonal antibody and Protein A Magnetic Bead (U0007), and immunoblotted with F11 MaxPab rabbit polyclonal antibody.



Detection limit for recombinant GST tagged F11 is approximately 10ng/ml as a capture antibody.



Detection limit for recombinant GST tagged F11 is approximately 10ng/ml as a capture antibody.

### **F11 monoclonal antibody (M01), clone 2H8 - Background**

This gene encodes coagulation factor XI of the blood coagulation cascade. This protein is present in plasma as a zymogen, which is a unique plasma coagulation enzyme because it exists as a homodimer consisting of two identical polypeptide chains linked by disulfide bonds. During activation of the plasma factor XI, an internal peptide bond is cleaved by factor XIIa (or XII) in each of the two chains, resulting in activated factor XIa, a serine protease composed of two heavy and two light chains held together by disulfide bonds. This activated plasma factor XI triggers the middle phase of the intrinsic pathway of blood coagulation by activating factor IX. Defects in this factor lead to Rosenthal syndrome, a blood coagulation abnormality.

### **F11 monoclonal antibody (M01), clone 2H8 - References**

Variation at the NFATC2 Locus Increases the Risk of Thiazolidinedione-Induced Edema in the Diabetes REduction Assessment with ramipril and rosiglitazone Medication (DREAM) Study. Bailey SD, et al. Diabetes Care, 2010 Jul 13. PMID 20628086. Association of common genetic variations and idiopathic venous thromboembolism. Results from EDITH, a hospital-based case-control study. Delluc A, et al. Thromb Haemost, 2010 Jun. PMID 20352152. Gene variants associated with venous thrombosis: confirmation in the MEGA study. Arellano AR, et al. J Thromb Haemost, 2010 May. PMID 20128871. Structure and function of factor XI. Emsley J, et al. Blood, 2010 Apr 1. PMID 20110423. Molecular characterization of in-frame and out-of-frame alternative splicings in coagulation factor XI pre-mRNA. Asselta R, et al. Blood, 2010 Mar 11. PMID 20042724.