

**FASLG Antibody (monoclonal) (M02)****Mouse monoclonal antibody raised against a full length recombinant FASLG.****Catalog # AT2000a****Specification**

---

**FASLG Antibody (monoclonal) (M02) - Product Information**

Application	IF, WB, E
Primary Accession	<a href="#">P48023</a>
Other Accession	<a href="#">BC017502</a>
Reactivity	Human
Host	mouse
Clonality	Monoclonal
Isotype	IgG2a kappa
Calculated MW	31485

**FASLG Antibody (monoclonal) (M02) - Additional Information****Gene ID** 356**Other Names**

Tumor necrosis factor ligand superfamily member 6, Apoptosis antigen ligand, APTL, CD95 ligand, CD95-L, Fas antigen ligand, Fas ligand, FasL, CD178, Tumor necrosis factor ligand superfamily member 6, membrane form, Tumor necrosis factor ligand superfamily member 6, soluble form, Receptor-binding FasL ectodomain, Soluble Fas ligand, sFasL, ADAM10-processed FasL form, APL, FasL intracellular domain, FasL ICD, SPPL2A-processed FasL form, SPA, FASLG, APT1LG1, CD95L, FASL, TNFSF6

**Target/Specificity**

FASLG (AAH17502.1, 1 a.a. ~ 281 a.a) full-length recombinant protein with GST tag. MW of the GST tag alone is 26 KDa.

**Dilution**

WB~~1:500~1000

**Format**

Clear, colorless solution in phosphate buffered saline, pH 7.2 .

**Storage**

Store at -20°C or lower. Aliquot to avoid repeated freezing and thawing.

**Precautions**

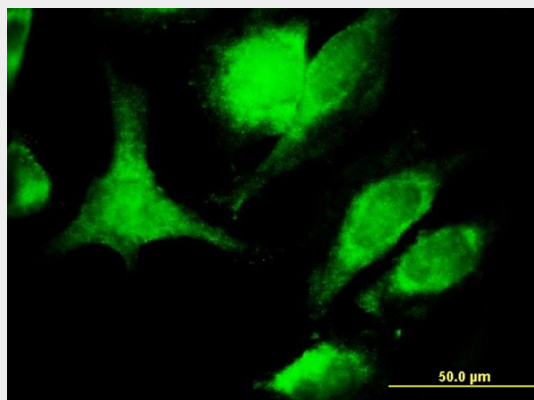
FASLG Antibody (monoclonal) (M02) is for research use only and not for use in diagnostic or therapeutic procedures.

**FASLG Antibody (monoclonal) (M02) - Protocols**

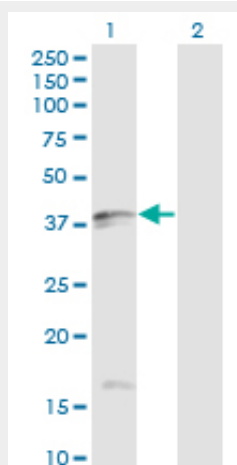
Provided below are standard protocols that you may find useful for product applications.

- [Western Blot](#)
- [Blocking Peptides](#)
- [Dot Blot](#)
- [Immunohistochemistry](#)
- [Immunofluorescence](#)
- [Immunoprecipitation](#)
- [Flow Cytometry](#)
- [Cell Culture](#)

#### FASLG Antibody (monoclonal) (M02) - Images



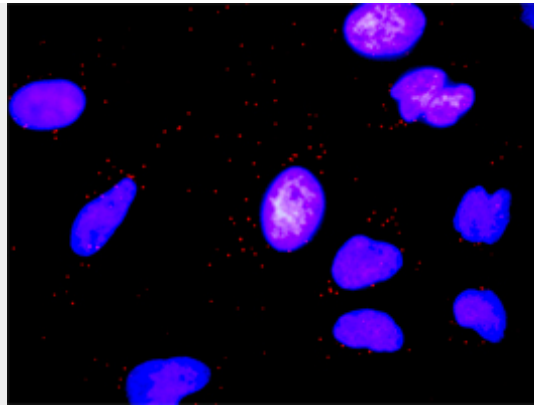
Immunofluorescence of monoclonal antibody to TNFSF6 on HeLa cell. [antibody concentration 10 ug/ml]



Western Blot analysis of FASLG expression in transfected 293T cell line by FASLG monoclonal antibody (M02), clone 2G9-G8.

Lane 1: FASLG transfected lysate (Predicted MW: 31.5 KDa).

Lane 2: Non-transfected lysate.



Detection limit for recombinant GST tagged FASLG is approximately 3ng/ml as a capture antibody.

#### **FASLG Antibody (monoclonal) (M02) - Background**

The protein encoded by this gene is the ligand for FAS. Both are transmembrane proteins. Interaction of FAS with this ligand is critical in triggering apoptosis of some types of cells such as lymphocytes. Defects in this gene may be related to some cases of systemic lupus erythematosus (SLE).

#### **FASLG Antibody (monoclonal) (M02) - References**

Fat intake interacts with polymorphisms of Caspase9, FasLigand and PPARGgamma apoptotic genes in modulating Crohn's disease activity. Ferreira P, et al. Clin Nutr, 2010 Jul 20. PMID 20650551. IL-13 and TH2 cytokine exposure triggers matrix metalloproteinase 7-mediated Fas ligand cleavage from bronchial epithelial cells. Wadsworth SJ, et al. J Allergy Clin Immunol, 2010 Aug. PMID 20624652. Physiogenomic analysis of statin-treated patients: domain-specific counter effects within the ACACB gene on low-density lipoprotein cholesterol? Ruafo G, et al. Pharmacogenomics, 2010 Jul. PMID 20602615. Functional polymorphisms in cell death pathway genes and risk of renal cell carcinoma. Zhu J, et al. Mol Carcinog, 2010 Sep. PMID 20572163. FAS and FASLG genetic variants and risk for second primary malignancy in patients with squamous cell carcinoma of the head and neck. Lei D, et al. Cancer Epidemiol Biomarkers Prev, 2010 Jun. PMID 20501759.