

**FBXL10 Antibody (monoclonal) (M09)****Mouse monoclonal antibody raised against a partial recombinant FBXL10.****Catalog # AT2011a****Specification**

---

**FBXL10 Antibody (monoclonal) (M09) - Product Information**

Application	IF, WB, E
Primary Accession	<a href="#">Q8NHM5</a>
Other Accession	<a href="#">NM_032590</a>
Reactivity	Human
Host	Mouse
Clonality	Monoclonal
Isotype	IgG2b Kappa
Calculated MW	152615

**FBXL10 Antibody (monoclonal) (M09) - Additional Information****Gene ID** 84678**Other Names**

Lysine-specific demethylase 2B, CXXC-type zinc finger protein 2, F-box and leucine-rich repeat protein 10, F-box protein FBL10, F-box/LRR-repeat protein 10, JmjC domain-containing histone demethylation protein 1B, Jumonji domain-containing EMSY-interactor methyltransferase motif protein, Protein JEMMA, Protein-containing CXXC domain 2, [Histone-H3]-lysine-36 demethylase 1B, KDM2B, CXXC2, FBL10, FBXL10, JHDM1B, PCCX2

**Target/Specificity**

FBXL10 (NP\_115979, 457 a.a. ~ 555 a.a) partial recombinant protein with GST tag. MW of the GST tag alone is 26 KDa.

**Dilution**

WB~~1:500~1000

**Format**

Clear, colorless solution in phosphate buffered saline, pH 7.2 .

**Storage**

Store at -20°C or lower. Aliquot to avoid repeated freezing and thawing.

**Precautions**

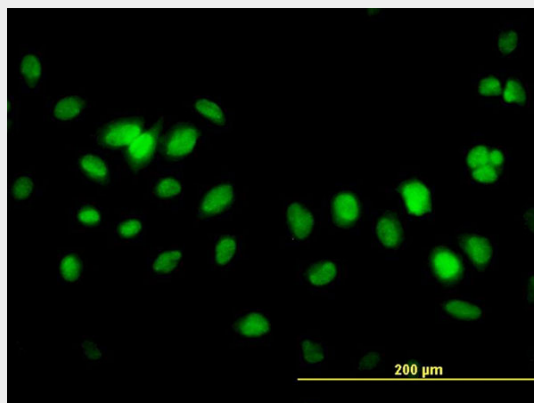
FBXL10 Antibody (monoclonal) (M09) is for research use only and not for use in diagnostic or therapeutic procedures.

**FBXL10 Antibody (monoclonal) (M09) - Protocols**

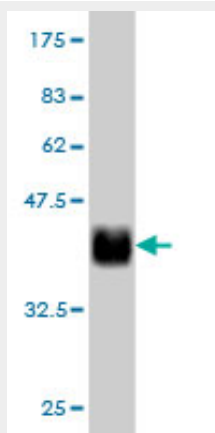
Provided below are standard protocols that you may find useful for product applications.

- [Western Blot](#)
- [Blocking Peptides](#)
- [Dot Blot](#)
- [Immunohistochemistry](#)
- [Immunofluorescence](#)
- [Immunoprecipitation](#)
- [Flow Cytometry](#)
- [Cell Culture](#)

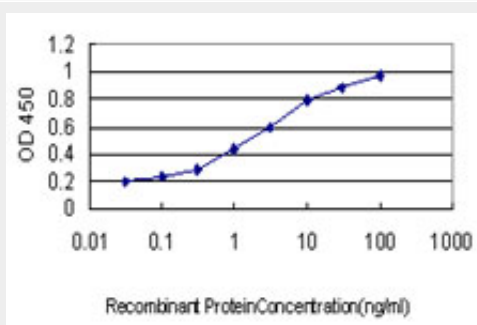
#### FBXL10 Antibody (monoclonal) (M09) - Images



Immunofluorescence of monoclonal antibody to FBXL10 on HeLa cell. [antibody concentration 10 ug/ml]



Antibody Reactive Against Recombinant Protein. Western Blot detection against Immunogen (36.63 KDa) .



Detection limit for recombinant GST tagged FBXL10 is approximately 0.1ng/ml as a capture

antibody.

### **FBXL10 Antibody (monoclonal) (M09) - Background**

This gene encodes a member of the F-box protein family which is characterized by an approximately 40 amino acid motif, the F-box. The F-box proteins constitute one of the four subunits of ubiquitin protein ligase complex called SCFs (SKP1-cullin-F-box), which function in phosphorylation-dependent ubiquitination. The F-box proteins are divided into 3 classes: Fbws containing WD-40 domains, Fbls containing leucine-rich repeats, and Fbxs containing either different protein-protein interaction modules or no recognizable motifs. The protein encoded by this gene belongs to the Fbls class. Multiple alternatively spliced transcript variants have been found for this gene, but the full-length nature of some variants has not been determined.

### **FBXL10 Antibody (monoclonal) (M09) - References**

1.JHDM1B/FBXL10 is a nucleolar protein that represses transcription of ribosomal RNA genes.Frescas D, Guardavaccaro D, Bassermann F, Koyama-Nasu R, Pagano M.Nature. 2007 Nov 8;450(7167):309-13.