

FBXL18 Antibody (monoclonal) (M01)**Mouse monoclonal antibody raised against a partial recombinant FBXL18.****Catalog # AT2012a****Specification**

FBXL18 Antibody (monoclonal) (M01) - Product Information

Application	WB, IHC, E
Primary Accession	O96ME1
Other Accession	NM_024963
Reactivity	Human
Host	mouse
Clonality	Monoclonal
Isotype	IgG1 Kappa
Calculated MW	78919

FBXL18 Antibody (monoclonal) (M01) - Additional Information**Gene ID** 80028**Other Names**

F-box/LRR-repeat protein 18, F-box and leucine-rich repeat protein 18, FBXL18, FBL18

Target/Specificity

FBXL18 (NP_079239, 1 a.a. ~ 110 a.a) partial recombinant protein with GST tag. MW of the GST tag alone is 26 KDa.

Dilution

WB~~1:500~1000

Format

Clear, colorless solution in phosphate buffered saline, pH 7.2 .

Storage

Store at -20°C or lower. Aliquot to avoid repeated freezing and thawing.

Precautions

FBXL18 Antibody (monoclonal) (M01) is for research use only and not for use in diagnostic or therapeutic procedures.

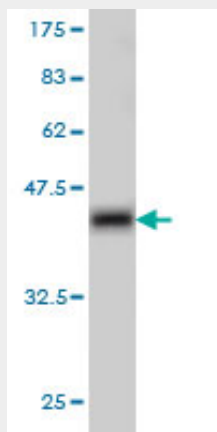
FBXL18 Antibody (monoclonal) (M01) - Protocols

Provided below are standard protocols that you may find useful for product applications.

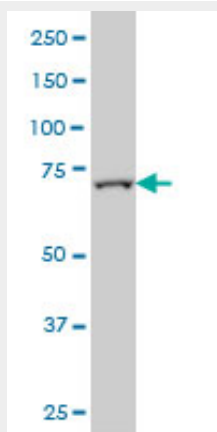
- [Western Blot](#)
- [Blocking Peptides](#)
- [Dot Blot](#)
- [Immunohistochemistry](#)

- [Immunofluorescence](#)
- [Immunoprecipitation](#)
- [Flow Cytometry](#)
- [Cell Culture](#)

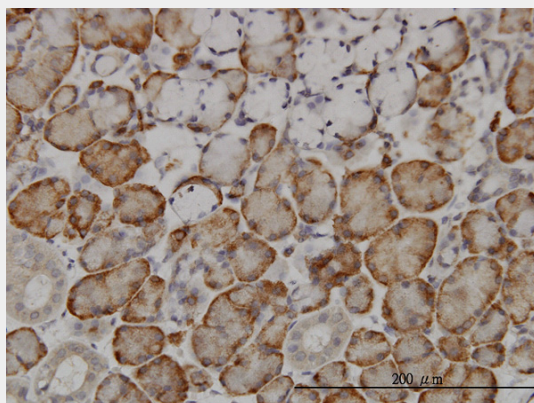
FBXL18 Antibody (monoclonal) (M01) - Images



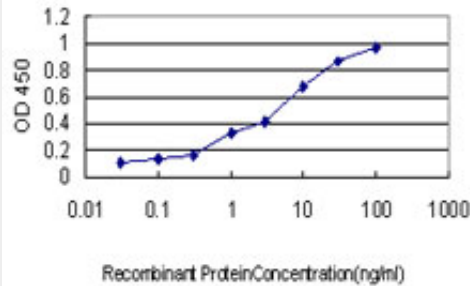
Antibody Reactive Against Recombinant Protein. Western Blot detection against Immunogen (37.84 kDa) .



FBXL18 monoclonal antibody (M01), clone 3H5 Western Blot analysis of FBXL18 expression in A-431 (Cat # AT2012a)



Immunoperoxidase of monoclonal antibody to FBXL18 on formalin-fixed paraffin-embedded human salivary gland. [antibody concentration 3 ug/ml]



Detection limit for recombinant GST tagged FBXL18 is approximately 0.1ng/ml as a capture antibody.

FBXL18 Antibody (monoclonal) (M01) - Background

Members of the F-box protein family, such as FBXL18, are characterized by an approximately 40-amino acid F-box motif. SCF complexes, formed by SKP1 (MIM 601434), cullin (see CUL1; MIM 603134), and F-box proteins, act as protein-ubiquitin ligases. F-box proteins interact with SKP1 through the F box, and they interact with ubiquitination targets through other protein interaction domains (Jin et al., 2004 [PubMed 15520277]).

FBXL18 Antibody (monoclonal) (M01) - References

Towards a proteome-scale map of the human protein-protein interaction network. Rual JF, et al. Nature, 2005 Oct 20. PMID 16189514. Systematic analysis and nomenclature of mammalian F-box proteins. Jin J, et al. Genes Dev, 2004 Nov 1. PMID 15520277. The status, quality, and expansion of the NIH full-length cDNA project: the Mammalian Gene Collection (MGC). Gerhard DS, et al. Genome Res, 2004 Oct. PMID 15489334. Complete sequencing and characterization of 21,243 full-length human cDNAs. Ota T, et al. Nat Genet, 2004 Jan. PMID 14702039. Generation and initial analysis of more than 15,000 full-length human and mouse cDNA sequences. Strausberg RL, et al. Proc Natl Acad Sci U S A, 2002 Dec 24. PMID 12477932.