

**FCN1 Antibody (monoclonal) (M06)****Mouse monoclonal antibody raised against a partial recombinant FCN1.****Catalog # AT2029a****Specification**

---

**FCN1 Antibody (monoclonal) (M06) - Product Information**

Application	WB, E
Primary Accession	<a href="#">O00602</a>
Other Accession	<a href="#">NM_002003</a>
Reactivity	Human
Host	mouse
Clonality	Monoclonal
Isotype	IgG2a Kappa
Calculated MW	35078

**FCN1 Antibody (monoclonal) (M06) - Additional Information****Gene ID** 2219**Other Names**

Ficolin-1, Collagen/fibrinogen domain-containing protein 1, Ficolin-A, Ficolin-alpha, M-ficolin, FCN1, FCNM

**Target/Specificity**

FCN1 (NP\_001994, 201 a.a. ~ 300 a.a) partial recombinant protein with GST tag. MW of the GST tag alone is 26 KDa.

**Dilution**

WB~~1:500~1000

**Format**

Clear, colorless solution in phosphate buffered saline, pH 7.2 .

**Storage**

Store at -20°C or lower. Aliquot to avoid repeated freezing and thawing.

**Precautions**

FCN1 Antibody (monoclonal) (M06) is for research use only and not for use in diagnostic or therapeutic procedures.

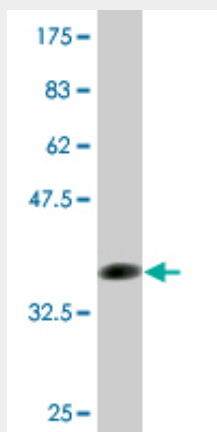
**FCN1 Antibody (monoclonal) (M06) - Protocols**

Provided below are standard protocols that you may find useful for product applications.

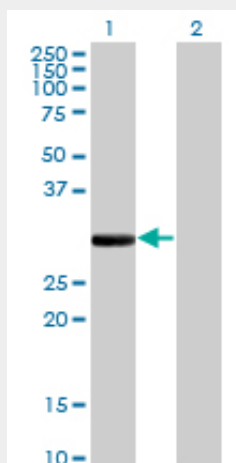
- [Western Blot](#)
- [Blocking Peptides](#)
- [Dot Blot](#)

- [Immunohistochemistry](#)
- [Immunofluorescence](#)
- [Immunoprecipitation](#)
- [Flow Cytometry](#)
- [Cell Culture](#)

#### FCN1 Antibody (monoclonal) (M06) - Images



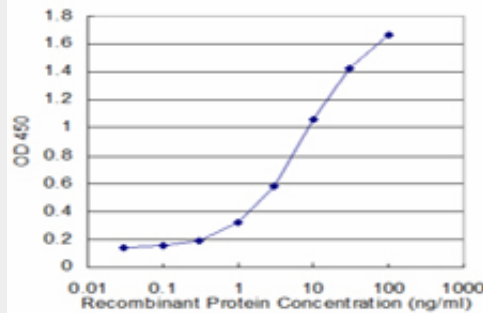
Antibody Reactive Against Recombinant Protein. Western Blot detection against Immunogen (36.74 kDa) .



Western Blot analysis of FCN1 expression in transfected 293T cell line by FCN1 monoclonal antibody (M06), clone 2B7.

Lane 1: FCN1 transfected lysate (35.1 kDa).

Lane 2: Non-transfected lysate.



Detection limit for recombinant GST tagged FCN1 is approximately 0.3ng/ml as a capture antibody.

### **FCN1 Antibody (monoclonal) (M06) - Background**

The ficolin family of proteins are characterized by the presence of a leader peptide, a short N-terminal segment, followed by a collagen-like region, and a C-terminal fibrinogen-like domain. The collagen-like and the fibrinogen-like domains are also found separately in other proteins such as complement protein C1q, C-type lectins known as collectins, and tenascins. However, all these proteins recognize different targets, and are functionally distinct. Ficolin 1 encoded by FCN1 is predominantly expressed in the peripheral blood leukocytes, and has been postulated to function as a plasma protein with elastin-binding activity.

### **FCN1 Antibody (monoclonal) (M06) - References**

Tethering of Ficolin-1 to cell surfaces through recognition of sialic acid by the fibrinogen-like domain. Honor? C, et al. J Leukoc Biol, 2010 Jul. PMID 20400674. Characteristics and biological variations of M-ficolin, a pattern recognition molecule, in plasma. Wittenborn T, et al. J Innate Immun, 2010 Feb. PMID 20375634. New genetic associations detected in a host response study to hepatitis B vaccine. Davila S, et al. Genes Immun, 2010 Apr. PMID 20237496. Carbohydrate recognition properties of human ficolins: glycan array screening reveals the sialic acid binding specificity of M-ficolin. Gout E, et al. J Biol Chem, 2010 Feb 26. PMID 20032467. Binding site of C-reactive protein on M-ficolin. Tanio M, et al. Mol Immunol, 2009 Dec. PMID 19853918.