

FES Antibody (monoclonal) (M01)**Mouse monoclonal antibody raised against a full length recombinant FES.****Catalog # AT2031a****Specification**

FES Antibody (monoclonal) (M01) - Product Information

Application	WB
Primary Accession	P07332
Other Accession	BC035357
Reactivity	Human
Host	mouse
Clonality	Monoclonal
Isotype	IgG1 kappa
Calculated MW	93497

FES Antibody (monoclonal) (M01) - Additional Information**Gene ID** 2242**Other Names**

Tyrosine-protein kinase Fes/Fps, Feline sarcoma/Fujinami avian sarcoma oncogene homolog, Proto-oncogene c-Fes, Proto-oncogene c-Fps, p93c-fes, FES, FPS

Target/Specificity

FES (AAH35357, 1 a.a. ~ 822 a.a) full-length recombinant protein with GST tag. MW of the GST tag alone is 26 KDa.

Dilution

WB~~1:500~1000

Format

Clear, colorless solution in phosphate buffered saline, pH 7.2 .

Storage

Store at -20°C or lower. Aliquot to avoid repeated freezing and thawing.

Precautions

FES Antibody (monoclonal) (M01) is for research use only and not for use in diagnostic or therapeutic procedures.

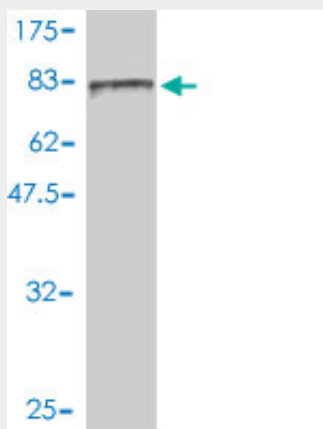
FES Antibody (monoclonal) (M01) - Protocols

Provided below are standard protocols that you may find useful for product applications.

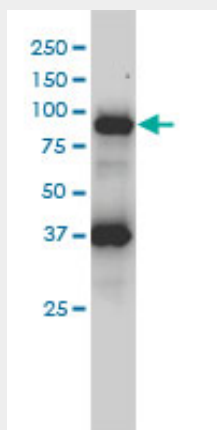
- [Western Blot](#)
- [Blocking Peptides](#)
- [Dot Blot](#)

- [Immunohistochemistry](#)
- [Immunofluorescence](#)
- [Immunoprecipitation](#)
- [Flow Cytometry](#)
- [Cell Culture](#)

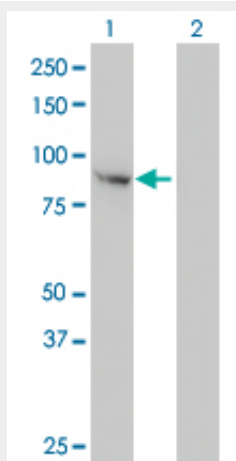
FES Antibody (monoclonal) (M01) - Images



Antibody Reactive Against Recombinant Protein. Western Blot detection against Immunogen (116.16 KDa) .



FES monoclonal antibody (M01), clone 3A3-1E5 Western Blot analysis of FES expression in HL-60 (Cat # AT2031a)



Western Blot analysis of FES expression in transfected 293T cell line by FES monoclonal antibody (M01), clone 3A3-1E5.

Lane 1: FES transfected lysate(93 KDa).

Lane 2: Non-transfected lysate.

FES Antibody (monoclonal) (M01) - Background

This gene encodes the human cellular counterpart of a feline sarcoma retrovirus protein with transforming capabilities. The gene product has tyrosine-specific protein kinase activity and that activity is required for maintenance of cellular transformation. Its chromosomal location has linked it to a specific translocation event identified in patients with acute promyelocytic leukemia but it is also involved in normal hematopoiesis as well as growth factor and cytokine receptor signaling. Alternative splicing results in multiple variants encoding different isoforms.

FES Antibody (monoclonal) (M01) - References

Variation at the NFATC2 Locus Increases the Risk of Thiazolinedinedione-Induced Edema in the Diabetes REduction Assessment with ramipril and rosiglitazone Medication (DREAM) Study. Bailey SD, et al. Diabetes Care, 2010 Jul 13. PMID 20628086.FES kinase participates in KIT-ligand induced chemotaxis. Voisset E, et al. Biochem Biophys Res Commun, 2010 Feb 26. PMID 20117079.Gene-centric association signals for lipids and apolipoproteins identified via the HumanCVD BeadChip. Talmud PJ, et al. Am J Hum Genet, 2009 Nov. PMID 19913121.Inhibition of endothelial cell chemotaxis toward FGF-2 by gefitinib associates with downregulation of Fes activity. Kanda S, et al. Int J Oncol, 2009 Dec. PMID 19885553.Mutual exclusion of ASXL1 and NPM1 mutations in a series of acute myeloid leukemias. Carbuccion N, et al. Leukemia, 2010 Feb. PMID 19865112.