

FGG Antibody (monoclonal) (M01)**Mouse monoclonal antibody raised against a partial recombinant FGG.****Catalog # AT2039a****Specification**

FGG Antibody (monoclonal) (M01) - Product Information

| | |
|-------------------|--------------------------|
| Application | WB, IHC, E |
| Primary Accession | P02679 |
| Other Accession | BC007044 |
| Reactivity | Human |
| Host | Mouse |
| Clonality | Monoclonal |
| Isotype | IgG1 kappa |
| Calculated MW | 51512 |

FGG Antibody (monoclonal) (M01) - Additional Information**Gene ID** 2266**Other Names**

Fibrinogen gamma chain, FGG

Target/Specificity

FGG (AAH07044, 31 a.a. ~ 130 a.a) partial recombinant protein with GST tag. MW of the GST tag alone is 26 KDa.

Dilution

WB~~1:500~1000

Format

Clear, colorless solution in phosphate buffered saline, pH 7.2 .

Storage

Store at -20°C or lower. Aliquot to avoid repeated freezing and thawing.

Precautions

FGG Antibody (monoclonal) (M01) is for research use only and not for use in diagnostic or therapeutic procedures.

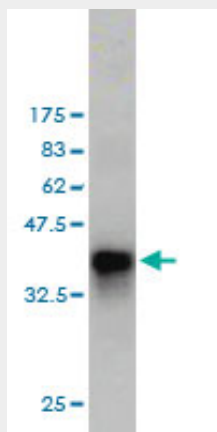
FGG Antibody (monoclonal) (M01) - Protocols

Provided below are standard protocols that you may find useful for product applications.

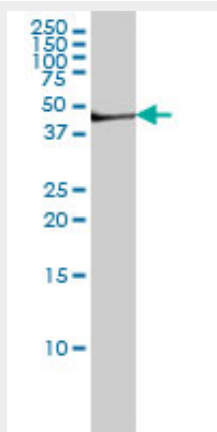
- [Western Blot](#)
- [Blocking Peptides](#)
- [Dot Blot](#)
- [Immunohistochemistry](#)

- [Immunofluorescence](#)
- [Immunoprecipitation](#)
- [Flow Cytometry](#)
- [Cell Culture](#)

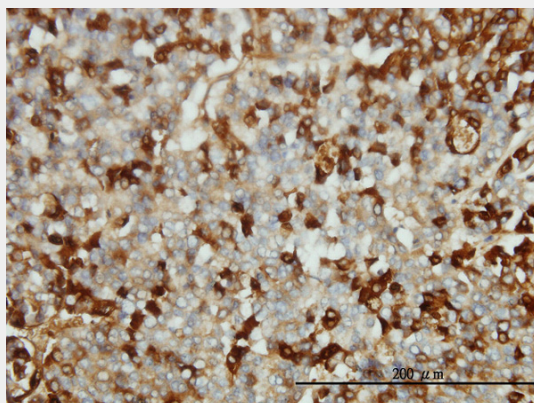
FGG Antibody (monoclonal) (M01) - Images



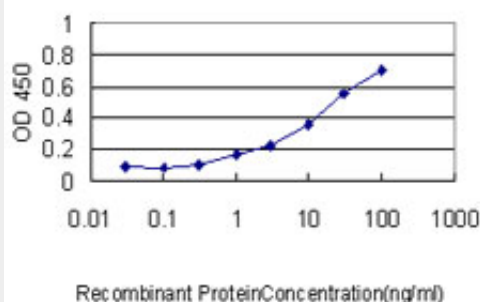
Antibody Reactive Against Recombinant Protein. Western Blot detection against Immunogen (36.63 kDa) .



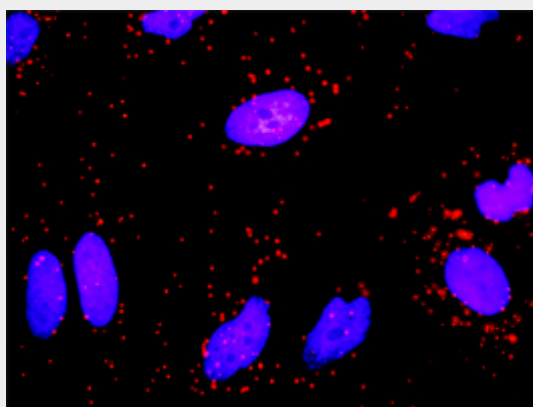
FGG monoclonal antibody (M01), clone 1F2 Western Blot analysis of FGG expression in HeLa S3 NE ((Cat # AT2039a)



Immunoperoxidase of monoclonal antibody to FGG on formalin-fixed paraffin-embedded human hepatocellular carcinoma tissue. [antibody concentration 1 ug/ml]



Detection limit for recombinant GST tagged FGG is approximately 0.3ng/ml as a capture antibody.



Proximity Ligation Analysis of protein-protein interactions between ICAM1 and FGG. HeLa cells were stained with anti-ICAM1 rabbit purified polyclonal 1:1200 and anti-FGG mouse monoclonal antibody 1:50. Each red dot represents the detection of protein-protein interaction complex, and nuclei were counterstained with DAPI (blue).

FGG Antibody (monoclonal) (M01) - Background

The protein encoded by this gene is the gamma component of fibrinogen, a blood-borne glycoprotein comprised of three pairs of nonidentical polypeptide chains. Following vascular injury, fibrinogen is cleaved by thrombin to form fibrin which is the most abundant component of blood clots. In addition, various cleavage products of fibrinogen and fibrin regulate cell adhesion and spreading, display vasoconstrictor and chemotactic activities, and are mitogens for several cell types. Mutations in this gene lead to several disorders, including dysfibrinogenemia, hypofibrinogenemia and thrombophilia. Alternative splicing results in two transcript variants encoding different isoforms.

FGG Antibody (monoclonal) (M01) - References

1. Identification of Novel Diagnostic Biomarkers for Asthma and Chronic Obstructive Pulmonary Disease. Verrills NM, Irwin JA, He XY, Wood LG, Powell H, Simpson JL, McDonald VM, Sim A, Gibson PG. *Am J Respir Crit Care Med*. 2011 Mar 18. [Epub ahead of print]
2. Analysis of proteomic profiles and functional properties of human peripheral blood myeloid dendritic cells, monocyte-derived dendritic cells and the dendritic cell-like KG-1 cells reveals distinct characteristics. Horlock C, Shakib F, Mahdavi J, Jones NS, Sewell HF, Ghaemmaghami AM. *Genome Biol*. 2007;8(3):R30.