

**FGL1 Antibody (monoclonal) (M01)****Mouse monoclonal antibody raised against a full length recombinant FGL1.****Catalog # AT2040a****Specification**

---

**FGL1 Antibody (monoclonal) (M01) - Product Information**

Application	IP, WB, E
Primary Accession	<a href="#">Q08830</a>
Other Accession	<a href="#">BC007047</a>
Reactivity	Human
Host	mouse
Clonality	Monoclonal
Isotype	IgG2b Kappa
Calculated MW	36379

**FGL1 Antibody (monoclonal) (M01) - Additional Information****Gene ID** 2267**Other Names**

Fibrinogen-like protein 1, HP-041, Hepassocin, Hepatocyte-derived fibrinogen-related protein 1, HFREP-1, Liver fibrinogen-related protein 1, LFIRE-1, FGL1, HFREP1

**Target/Specificity**

FGL1 (AAH07047.1, 19 a.a. ~ 312 a.a) full-length recombinant protein with GST tag. MW of the GST tag alone is 26 KDa.

**Dilution**

WB~~1:500~1000

**Format**

Clear, colorless solution in phosphate buffered saline, pH 7.2 .

**Storage**

Store at -20°C or lower. Aliquot to avoid repeated freezing and thawing.

**Precautions**

FGL1 Antibody (monoclonal) (M01) is for research use only and not for use in diagnostic or therapeutic procedures.

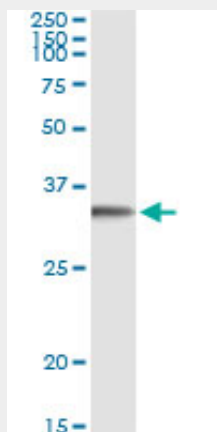
**FGL1 Antibody (monoclonal) (M01) - Protocols**

Provided below are standard protocols that you may find useful for product applications.

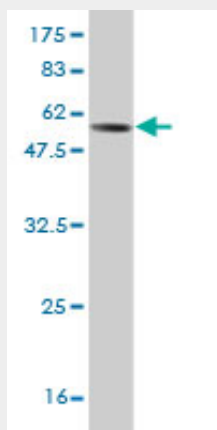
- [Western Blot](#)
- [Blocking Peptides](#)
- [Dot Blot](#)

- [Immunohistochemistry](#)
- [Immunofluorescence](#)
- [Immunoprecipitation](#)
- [Flow Cytometry](#)
- [Cell Culture](#)

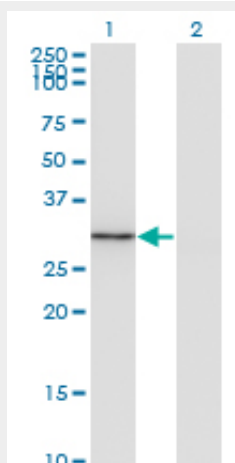
### FGL1 Antibody (monoclonal) (M01) - Images



Immunoprecipitation of FGL1 transfected lysate using anti-FGL1 monoclonal antibody and Protein A Magnetic Bead ([U0007](#)), and immunoblotted with FGL1 MaxPab rabbit polyclonal antibody.



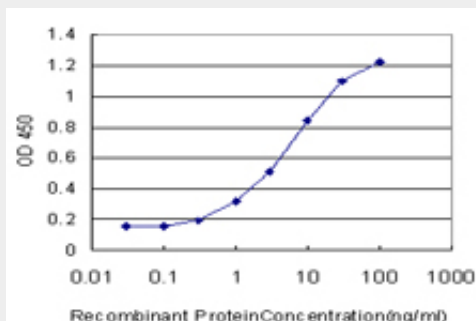
Antibody Reactive Against Recombinant Protein. Western Blot detection against Immunogen (57.97 KDa) .



Western Blot analysis of FGL1 expression in transfected 293T cell line by FGL1 monoclonal antibody (M01), clone 2A4.

Lane 1: FGL1 transfected lysate(36.4 KDa).

Lane 2: Non-transfected lysate.



Detection limit for recombinant GST tagged FGL1 is approximately 0.3ng/ml as a capture antibody.

### **FGL1 Antibody (monoclonal) (M01) - Background**

Fibrinogen-like 1 is a member of the fibrinogen family. This protein is homologous to the carboxy terminus of the fibrinogen beta- and gamma- subunits which contains the four conserved cysteines of fibrinogens and fibrinogen related proteins. However, this protein lacks the platelet-binding site, cross-linking region and a thrombin-sensitive site which are necessary for fibrin clot formation. This protein may play a role in the development of hepatocellular carcinomas. Four alternatively spliced transcript variants encoding the same protein exist for this gene.

### **FGL1 Antibody (monoclonal) (M01) - References**

Variation at the NFATC2 Locus Increases the Risk of Thiazolidinedione-Induced Edema in the Diabetes REduction Assessment with ramipril and rosiglitazone Medication (DREAM) Study. Bailey SD, et al. Diabetes Care, 2010 Jul 13. PMID 20628086. Personalized smoking cessation: interactions between nicotine dose, dependence and quit-success genotype score. Rose JE, et al. Mol Med, 2010 Jul-Aug. PMID 20379614. Gene-centric association signals for lipids and apolipoproteins identified via the HumanCVD BeadChip. Talmud PJ, et al. Am J Hum Genet, 2009 Nov. PMID 19913121. Secreted protein acidic and rich in cysteine (SPARC) gene polymorphism association with hepatocellular carcinoma in Italian patients. Segat L, et al. J Gastroenterol Hepatol, 2009 Dec. PMID 19817957. Specific expression and regulation of hepassocin in the liver and down-regulation of the correlation of HNF1alpha with decreased levels of hepassocin in human hepatocellular carcinoma. Yu HT, et al. J Biol Chem, 2009 May 15. PMID 19304666.