

GFRA1 Antibody (monoclonal) (M03)**Mouse monoclonal antibody raised against a full length recombinant GFRA1.****Catalog # AT2194a****Specification**

GFRA1 Antibody (monoclonal) (M03) - Product Information

Application	WB
Primary Accession	P56159
Other Accession	NM_005264
Reactivity	Human
Host	mouse
Clonality	Monoclonal
Isotype	IgG2a Kappa
Calculated MW	51456

GFRA1 Antibody (monoclonal) (M03) - Additional Information**Gene ID** 2674**Other Names**

GDNF family receptor alpha-1, GDNF receptor alpha-1, GDNFR-alpha-1, GFR-alpha-1, RET ligand 1, TGF-beta-related neurotrophic factor receptor 1, GFRA1, GDNFRA, RETL1, TRNR1

Target/Specificity

GFRA1 (NP_005255, 32 a.a. ~ 119 a.a) full length recombinant protein with GST tag. MW of the GST tag alone is 26 KDa.

Dilution

WB~~1:500~1000

Format

Clear, colorless solution in phosphate buffered saline, pH 7.2 .

Storage

Store at -20°C or lower. Aliquot to avoid repeated freezing and thawing.

Precautions

GFRA1 Antibody (monoclonal) (M03) is for research use only and not for use in diagnostic or therapeutic procedures.

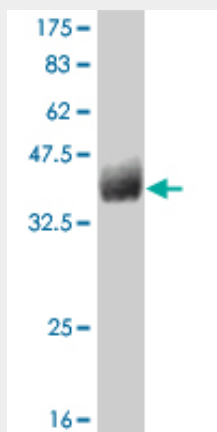
GFRA1 Antibody (monoclonal) (M03) - Protocols

Provided below are standard protocols that you may find useful for product applications.

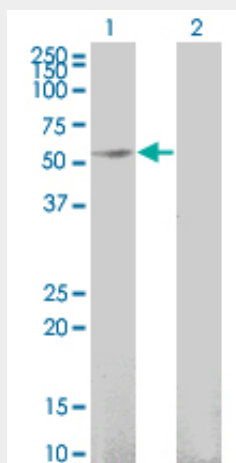
- [Western Blot](#)
- [Blocking Peptides](#)
- [Dot Blot](#)

- [Immunohistochemistry](#)
- [Immunofluorescence](#)
- [Immunoprecipitation](#)
- [Flow Cytometry](#)
- [Cell Culture](#)

GFRA1 Antibody (monoclonal) (M03) - Images



Antibody Reactive Against Recombinant Protein. Western Blot detection against Immunogen (35.68 kDa) .



Western Blot analysis of GFRA1 expression in transfected 293T cell line by GFRA1 monoclonal antibody (M03), clone 3E4.

Lane 1: GFRA1 transfected lysate (50.8 kDa).

Lane 2: Non-transfected lysate.

GFRA1 Antibody (monoclonal) (M03) - Background

Glial cell line-derived neurotrophic factor (GDNF) and neurturin (NTN) are two structurally related, potent neurotrophic factors that play key roles in the control of neuron survival and differentiation. The protein encoded by this gene is a member of the GDNF receptor family. It is a glycosylphosphatidylinositol (GPI)-linked cell surface receptor for both GDNF and NTN, and mediates activation of the RET tyrosine kinase receptor. This gene is a candidate gene for Hirschsprung disease. Multiple alternatively spliced transcript variants have been described for this gene.

GFRA1 Antibody (monoclonal) (M03) - References

[Multiple endocrine neoplasia: genetic aspects] Calender A, et al. Bull Acad Natl Med, 2010 Jan. PMID 20669561. L-type voltage-dependent calcium channel alpha subunit 1C is a novel candidate gene associated with secondary hyperparathyroidism: an application of haplotype-based analysis for multiple linked single nucleotide polymorphisms. Yokoyama K, et al. Nephron Clin Pract, 2010. PMID 20424473. Personalized smoking cessation: interactions between nicotine dose, dependence and quit-success genotype score. Rose JE, et al. Mol Med, 2010 Jul-Aug. PMID 20379614. Expression of GDNF receptors GFRalpha1 and RET is preserved in substantia nigra pars compacta of aging Asian Indians. Alladi PA, et al. J Chem Neuroanat, 2010 Sep. PMID 20347960. Genetic association of the GDNF alpha-receptor genes with schizophrenia and clozapine response. Souza RP, et al. J Psychiatr Res, 2010 Aug. PMID 20116071.