

**GTPBP1 Antibody (monoclonal) (M01)****Mouse monoclonal antibody raised against a partial recombinant GTPBP1.****Catalog # AT2297a****Specification**

---

**GTPBP1 Antibody (monoclonal) (M01) - Product Information**

Application	IP, WB
Primary Accession	<a href="#">O00178</a>
Other Accession	<a href="#">NM_004286</a>
Reactivity	Human
Host	mouse
Clonality	Monoclonal
Isotype	IgG2a Kappa
Calculated MW	72454

**GTPBP1 Antibody (monoclonal) (M01) - Additional Information****Gene ID** 9567**Other Names**

GTP-binding protein 1, G-protein 1, GP-1, GP1, GTPBP1

**Target/Specificity**

GTPBP1 (NP\_004277, 1 a.a. ~ 76 a.a) partial recombinant protein with GST tag. MW of the GST tag alone is 26 kDa.

**Dilution**

WB~~1:500~1000

**Format**

Clear, colorless solution in phosphate buffered saline, pH 7.2 .

**Storage**

Store at -20°C or lower. Aliquot to avoid repeated freezing and thawing.

**Precautions**

GTPBP1 Antibody (monoclonal) (M01) is for research use only and not for use in diagnostic or therapeutic procedures.

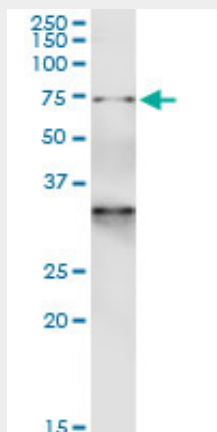
**GTPBP1 Antibody (monoclonal) (M01) - Protocols**

Provided below are standard protocols that you may find useful for product applications.

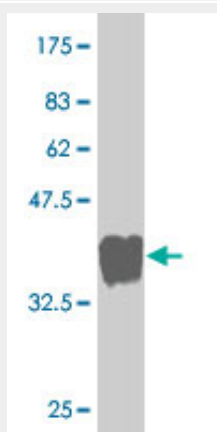
- [Western Blot](#)
- [Blocking Peptides](#)
- [Dot Blot](#)
- [Immunohistochemistry](#)

- [Immunofluorescence](#)
- [Immunoprecipitation](#)
- [Flow Cytometry](#)
- [Cell Culture](#)

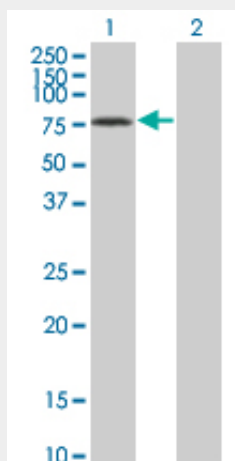
### GTPBP1 Antibody (monoclonal) (M01) - Images



Immunoprecipitation of GTPBP1 transfected lysate using anti-GTPBP1 monoclonal antibody and Protein A Magnetic Bead ([U0007](#)), and immunoblotted with GTPBP1 monoclonal antibody.



Antibody Reactive Against Recombinant Protein. Western Blot detection against Immunogen (34.1 kDa) .



Western Blot analysis of GTPBP1 expression in transfected 293T cell line by GTPBP1 monoclonal antibody (M01), clone 1H1.

Lane 1: GTPBP1 transfected lysate(63.4 KDa).  
Lane 2: Non-transfected lysate.

#### **GTPBP1 Antibody (monoclonal) (M01) - Background**

This gene is upregulated by interferon-gamma and encodes a protein that is a member of the AGP11/GTPBP1 family of GTP-binding proteins. A structurally similar protein has been found in mouse, where disruption of the gene for that protein had no observable phenotype.

#### **GTPBP1 Antibody (monoclonal) (M01) - References**

Global, in vivo, and site-specific phosphorylation dynamics in signaling networks. Olsen JV, et al. Cell, 2006 Nov 3. PMID 17081983. The status, quality, and expansion of the NIH full-length cDNA project: the Mammalian Gene Collection (MGC). Gerhard DS, et al. Genome Res, 2004 Oct. PMID 15489334. A genome annotation-driven approach to cloning the human ORFeome. Collins JE, et al. Genome Biol, 2004. PMID 15461802. Complete sequencing and characterization of 21,243 full-length human cDNAs. Ota T, et al. Nat Genet, 2004 Jan. PMID 14702039. Generation and initial analysis of more than 15,000 full-length human and mouse cDNA sequences. Strausberg RL, et al. Proc Natl Acad Sci U S A, 2002 Dec 24. PMID 12477932.